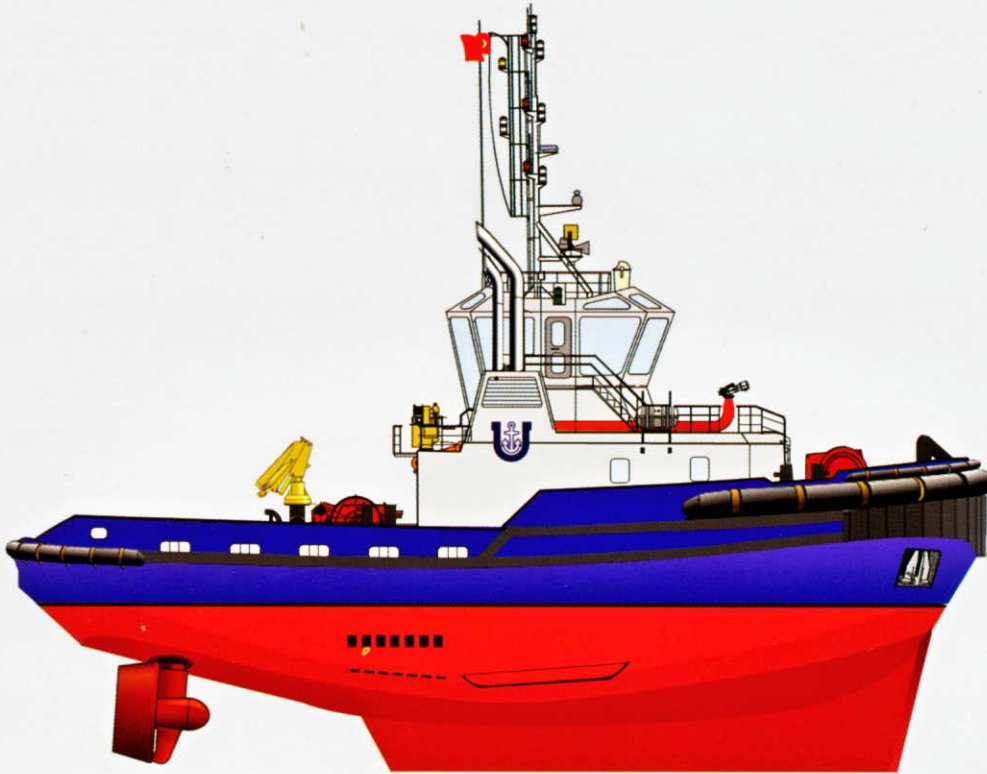




**UZMAR**  
SHIPYARD

TUG AND WORK BOAT BUILDERS

**“QUALITY  
FIRST”**



## → “ ASD 3070E ” TERMINAL - ESCORT - TOWAGE - FIRE FIGHTING TUG

- BUILDER
- BASIC DUTY
- CLASSIFICATION

- SAFETY REGULATIONS
- DESIGNER
- L.O.A.- Beam - Depth
- MAX .DRAUGHT - SPEED
- FUEL - FRESH WATER
- BALLAST WATER
- TOTAL INSTALLED POWER
- BOLLARD PULL
- MAIN ENGINES
- GENERATOR SET
- COOLING SYSTEM
- PROPULSION

- RUDDERS
- STEERING
- FIRE PUMP

- MONITORS
- FOAM CAPACITY
- TOWING EQUIPMENT

- DECK CRANE
- RESCUE BOAT DAVID
- COMPLEMENT
- OTHER EQUIPMENT

- NAUTICAL AND COMMUNICATION EQUIPMENT

Uzmar Shipbuilding Industry and Trade Inc., İstanbul, Turkey

Terminal, Ship Assist, Coastal Towing, Escort, Fire Fighting 1, Fresh Water Supply Bureau Veritas 1 + Hull + Mach, Escort Tug, AUT - UMS, Fire - Fighting 1, Unrestricted Service, Area A2

SOLAS 1974, MARPOL 1973 / 1978, Load Line 1966

Robert Allan Ltd., Vancouver, Canada

30.25 - 11.75 meters

5.8 meters - 13 knots

173.000 - 109.000 liters

49.000 liters

2 x 2.000 bkW

70 m tonnes

Caterpillar 3516B HD DITA C Rating 2000bkW @ 1600rpm

2 x Cummins 6BT 5.9 DM Stamford Alternator 81 ekW each @ 1500 rpm 400V, 50 Hz, 3 P

NRF, Holland Box Coolers

2 x Rolls Royce US 255CP or Schottel SRP 1515 CP, with 2,6 meters diameter rudder

propellers

2 x 360 degrees steerable rudder propellers

2 x full follow-up combi lever, one for each drive

2 x main engine driven double suction, split case, centrifugal pumps. 1 x 1200 m<sup>3</sup>/h, 1 x

1500 m<sup>3</sup>/h

Fire Fighting 1, water curtain

2 x SKUM each 1200 m<sup>3</sup>/h electrical remote control monitor for water / foam

16.000 liters

1 x escort rated double drum render / recovery hawser winch, 335 tonnes brake at 1<sup>st</sup>

layer, 70 tonnes rendering at 20 meters /min on 1<sup>st</sup> layer, 5 tonnes recovering at 100

meters /min on 4<sup>th</sup> layer, 30 - 100 % adjustable rendering forces, capacity for 130 mete

96 mm line 1 x split drum aft towing winch, 175 tonnes brake, 30 tonnes line pull at 10 n

/ min, capacity for 1 x 700 meters and 1 x 350 meters 52 mm wire, all make Rolls Royce

1 x 70 tonnes SWL towing Hook, make Mampaey, Holland. 1 x Data Hydraulic Towing pin

Telescopic Foldable type, 2 tonnes @ 9,6 meters, Palfinger, Austria

1 x SOLAS Approved, Ned Deck Marine, Holland

10 crew fully air conditioned

2 x compressed air system, Atlas Copco, 1 x biological sewage treatment system for 10

person, DVZ, Germany, W section, D type and cylindrical fenders, Lion rubber, Lighting

fixtures, Aqua Signal, Germany

Navigational area A2

“Hand made in Turkey”

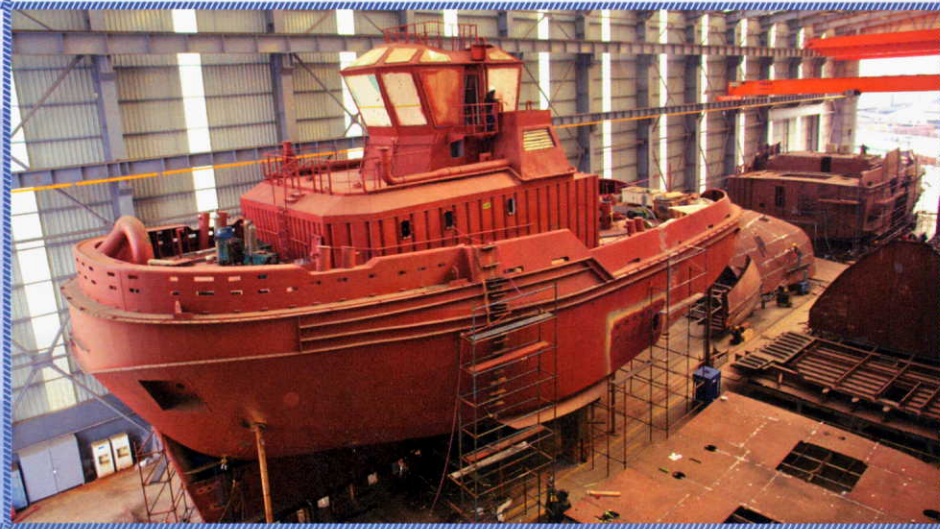




**UZMAR**  
SHIPYARD

TUG AND WORK BOAT BUILDERS

**“QUALITY  
FIRST”**



**UZMAR SHIPBUILDING INDUSTRY AND TRADE INC.**

**Shipyards**

KOSBAS, Kocaeli Serbest Bölgesi,  
Yeniköy 41275, İzmit - Kocaeli, Türkiye  
Tel : +90 (262) 341 45 10 (PBX)  
Faks : +90 (262) 341 45 12 (Technical)

**Branch Office**

Rauf Orbay Cad. Baran İş Merkezi  
No: 31 / 2 Tuzla, İstanbul, Türkiye  
Tel : +90 (216) 582 03 12 - 13 - 14  
Faks : +90 (216) 582 03 12



**UZMAR**  
SHIPYARD

TUG AND WORK BOAT BUILDERS

**“QUALITY  
FIRST”**



→ **“NEW DOLPHIN” LINE HANDLING / HARBOUR SUPPORT VESSEL**

- BUILDER
- PLACE - DATE BUILT
- BASIC DUTY
- CLASSIFICATION
- DESIGNER
- L.O.A. - Beam - Depth
- GT - NRT
- DRAFT - SPEED
- FUEL - FRESH WATER
- TOTAL BHP
- BOLLARD PULL
- MAIN ENGINES
- COOLING SYSTEM
- PROPULSION

- RUDDERS
- STEERING
- FIRE PUMP
- TOWING EQUIPMENT
- COMPLEMENT

• NAUTICAL AND COMMUNICATION EQUIPMENT

• OTHER EQUIPMENT

Uzmar Shipbuilding Industry and Trade Inc. Istanbul - Turkey  
Istanbul, Turkey - March 2007

Service - Line Handling - Harbour Support  
RINA Motorship C + Hull • Mach Special Service-Mooring Boat  
Uzmar Shipbuilding Industry and Trade Inc.

12,50 - 4, 40 - 1,90 meters

30,36 - 17,05

2,0 meters extreme - 11.0 knots

4. 200 liters - 300 liters

720 BHP

11.0 tons

2 x IVECO Aifo 8210 SRM 36.12 - Rated power 530 kW at 1800 rpm

Each engine is cooled by sea water running through tube type heat exchanger

2 x skewed Kaplan type fixed pitch propellers 1080 mm dia. in fixed

19A thrust augmenting nozzles

2 x blade type, twin rudder arrangement behind each nozzle

Steering cylinders driven by hydraulic pump through the PTO on main engine

2 x Bilge & Fire Pumps make Gianneschi, Italy

1 x Mampaey towing hook SWL 15 tons; electric driven windlass make Data 1 ton pull

Crew 3 persons - Passenger 5 persons

2 x VHF 25W with external deck speaker, RT-5022 and RT-2048 make SAILOR ;

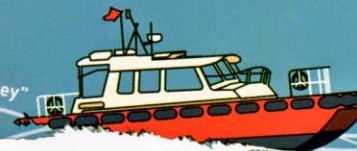
1 x Raymarine C120 Multi function navigation display in combination with Chartplotter,

Fish Finder, Radar, GPS functions; 1 x Navtex make ICS; 1 x EPIRB make Sailor ;

1 x SART II make Sailor

Key type and hollow D type fenders; 1 x 240 Watt remote controlled halogen searchlight

“Hand made in Turkey”





**UZMAR**  
SHIPYARD

TUG AND WORK BOAT BUILDERS

“QUALITY  
FIRST”



UZMAR SHIPBUILDING INDUSTRY AND TRADE INC.

Shipyards

KOSBAS, Kocaeli Serbest Bölgesi,  
Yeniköy 41275, İzmit - Kocaeli, Türkiye  
Tel : +90 (262) 341 45 10 (PBX)  
Faks : +90 (262) 341 45 12 (Technical)

Branch Office

Rauf Orbay Cad. Baran İş Merkezi  
No: 31 / 2 Tuzla, İstanbul, Türkiye  
Tel : +90 (216) 582 03 12 - 13 - 14  
Faks : +90 (216) 582 03 12

Web: [www.uzmar.com](http://www.uzmar.com)

E-Mail: [izmir@uzmar.com](mailto:izmir@uzmar.com)



**UZMAR**  
SHIPYARD

TUG AND WORK BOAT BUILDERS

**“QUALITY  
FIRST”**



→ **“BIG DOLPHIN” TS 1506 TWIN SCREW TUG / HARBOUR SUPPORT VESSEL**

- BUILDER
- BASIC DUTY
- CLASSIFICATION
- DESIGNER
- L.O.A.- Beam - Depth
- MAX .DRAUGHT - SPEED
- FUEL - FRESH WATER
- BALLAST WATER
- TOTAL INSTALLED POWER
- BOLLARD PULL
- MAIN ENGINES
- GENERATOR SET
- COOLING SYSTEM
- PROPULSION
- RUDDERS
- STEERING
- FIRE PUMP
- MONITORS
- FOAM CAPACITY
- TOWING EQUIPMENT

• DECK CRANE

- COMPLEMENT
- NAUTICAL AND COMMUNICATION EQUIPMENT

• OTHER EQUIPMENT

Uzmar Shipbuilding Industry and Trade Inc. Istanbul, Turkey

Ship Assist, General Harbour Towing, Barge Pushing, Buoy maintenance

RINA C + HULL + MACH , TUG, COASTAL SERVICE

Uzmar Shipbuilding Industry and Trade Inc. Istanbul, Turkey

14,80 - 5,80 - 2,30 meters

Under 100 GRT

1,85 meters - 11 knots

14 m<sup>3</sup> - 3 m<sup>3</sup>

1.500 BHP

20.0 tons ahead 14.0 tons astern

2 x Volvo Penta D16 MH Rated Power each 551 kW at 1900 rpm / Twin Disc MG 5170 DC

1 x 12 kVA, 1 x 3 kVA make Fisher Panda

Each engine is cooled by sea water running through tube type heat exchanger

2 x Skewed Kaplan type fixed pitch propellers in steerable 19A thrust augmenting nozzle

2 x Steerable kort nozzles

2 x independent steering gears, full- follow up system

1 x 300 m<sup>3</sup>/h, by main engine front end pto with manual actuated clutch

1 x Skum 300 m<sup>3</sup>/h, remote controlled

1 m<sup>3</sup>

1 x Single drum aft towing winch, 120m x 24 mm dia. steel towing wire

1 x Mampaey disc type towing hook SWL 25 tons

NOREQ / AK7 E2, 1,3 tons at 4 meters, max. outreach 7,5 meters

Crew 2, passenger 5, fully air conditioned accomodation for 2 crew

2 x VHF 25W with external deck speaker, RT 2048 make SAILOR; 1 x Raymarine C120

multifunction navigation display in combination with Chartplotter, Fish Finder, Radar,

GPS functions. 1 x Navtex make ICS, 1 x EPIRB make Sailor, 1 x SART II make Sailor

Key type and Hollow D type fenders, 3 x 250W halogen Searchlight make Norselight,

Fire Detection and Alarm system, Magnetic Compass, sea water cooled air conditioning

1 x 100 kg anchor and 100 m 12,5 mm U2 chain

“Hand made in Turkey”





**UZMAR**  
SHIPYARD

TUG AND WORK BOAT BUILDERS

**"QUALITY  
FIRST"**



**UZMAR SHIPBUILDING INDUSTRY AND TRADE INC.**

**Shipyards**

№05045, Acısın Feriysiz Bldesi,  
Samsun 41770, Samsun - Kocaeli, Türkiye  
Tel: +90 462 21 94 14 48 10 10 00 01  
E-mail: uzmar@uzmar.com.tr

**Branch Office**

İzmit Ortaokul, Baran İş Merkezi  
No: 37/22, İzmit, İzmitli Ödemiş  
Tel: +90 312 211 587 20 22  
Fax: +90 312 211 587 20 22



→ M/Tug ALSANCAK (2-4-6-8)

TS 22-45 45 tons bp Terminal / Ship Assist / Coastal Towing / Fire Fighting ½ Tug

- BUILDER
- BASIC DUTY
- CLASSIFICATION
- DESIGNER
- L.O.A.-Beam
- DRAFT - SPEED
- FUEL - FRESH WATER
- TOTAL BHP
- BOLLARD PULL
- MAIN ENGINES
- GENERATOR SET
- COOLING SYSTEM
- PROPULSION
- RUDDERS
- STEERING
- FIRE PUMP
- MONITORS
- FOAM
- TOWING EQUIPMENT

Uzmar Shipbuilding Industry and Trade Inc. Istanbul - Turkey, 2005  
 Ship Assist Coastal Towing Fire Fighting ½ Tug  
 Bureau Veritas 1 + Hull + Machinery + Tug + Unrestricted Navigation + GMDSS A2  
 Robert Allan Ltd., Vancouver Canada  
 22.50 - 8.20 meters  
 4.10 m - 12.5 knots  
 50.000 liters - 14.000 liters  
 2840 BHP  
 45 metric tons  
 2 x Caterpillar 3512B DITA B-Rating Rated power 1051 kW @ 1,600 rpm  
 2 x Cummins 4BT 3.9 DM Stamford Alternator 41 kW each 380 V 50 Hz  
 Closed circuit keel cooling channels  
 2 x LIPS Kaplan type Fixed Pitch props in LIPS HR High Performance nozzles  
 Triple Shutter Hi-Lift Rudders behind each nozzle  
 2x Independent jog lever full follow up control  
 1200 m3 main fire pump driven by dedicated diesel engine  
 2 x SKUM each 600 m3 electrical remote control monitor for water/foam  
 4,000 liters  
 1 x Bow Hawser winch 75 tons brake 5 tons pull  
 1 x Aft Towing winch 400 m x 34 mm steel line, make Kraaijeveld, Holland  
 1 x Mampaey Towing Hook - 1 x Data Hydraulic Towing Pins  
 8 crew full airconditioned

• COMPLEMENT

• NAUTICAL AND COMMUNICATION

International voyages A2 1 x Radar, 1 x Auto Pilot, 1 x Chart Plotter, 1 x GPS,  
 1 x Echo Sounder, 1 x Magnetic Compass, 2 x DSC VHF, 1 x SART,  
 1 x EPIRB, 1 x Navtex, 2 x Portable GMDSS VHF,  
 make RayMarine, SAILOR, Cassens & Plath





UZMAR SHIPBUILDING INDUSTRY AND TRADE INC.

**Shipyard**

KOSGİS, Kocaeli Sarıbağ Boğazi,  
Yanıköy A1225, İzmit - Kocaeli, Türkiye  
Tel: +90 (262) 343 45 10 (Rmx)  
Faks: +90 (262) 343 45 12 (RdliBcan)

**Branch Office**

Emil Orhan Cad. Barın Is Merkezi  
No:31/2 Tuzla, İstanbul, Türkiye  
Tel: +90 (216) 592 05 22 - 10 - 14  
Faks: +90 (216) 592 20 12





→ **“BIG DOLPHIN” TS 1506 TWIN SCREW TUG / HARBOUR SUPPORT VESSEL**

- BUILDER
- BASIC DUTY
- CLASSIFICATION
- DESIGNER
- L.O.A. - Beam - Depth
- MAX. DRAUGHT - SPEED
- FUEL - FRESH WATER
- BALLAST WATER
- TOTAL INSTALLED POWER
- BOLLARD PULL
- MAIN ENGINES
- GENERATOR SET
- COOLING SYSTEM
- PROPULSION
- RUDDERS
- STEERING
- FIRE PUMP
- MONITORS
- FOAM CAPACITY
- TOWING EQUIPMENT

• DECK CRANE

- COMPLEMENT
- NAUTICAL AND COMMUNICATION EQUIPMENT

• OTHER EQUIPMENT

Uzmar Shipbuilding Industry and Trade Inc. Istanbul, Turkey  
 Ship Assist. General Harbour Towage, Barge Pushing, Buoy maintenance  
 RINA C + HULL + MACH, TUG, COASTAL SERVICE  
 Uzmar Shipbuilding Industry and Trade Inc. Istanbul, Turkey

14,80 - 5,80 - 2,30 meters

Under 100 GRT

1,85 meters - 11 knots

14 m<sup>3</sup> - 3 m<sup>3</sup>

1.500 BHP

20,0 tons ahead - 14,0 tons astern

2 x Volvo Penta D16 MH Rated Power each 551 kW at 1900 rpm / Twin Disc MG 5170 DC

1 x 12 kVA, 1 x 3 kVA make Fisher Panda

Each engine is cooled by sea water running through tube type heat exchanger

2 x Skewed Kaplan type fixed pitch propellers in steerable 19A thrust augmenting nozzle

2 x Steerable Kort nozzles

2 x independent steering gears, full-follow up system

1 x 300 m<sup>3</sup>/h, by main engine front end pto with manual actuated clutch

1 x Skum 300 m<sup>3</sup>/h, remote controlled

1 m<sup>3</sup>

1 x Single drum aft towing winch, 120m x 24 mm dia. steel towing wire

1 x Mampaey disc type towing hook SWL 25 tons

NORED / AK7 E2, 1,3 tons at 4 meters, max. outreach 7,5 meters

Crew 2; passenger 5, fully air conditioned accommodation for 2 crew

2 x VHF 25W with external deck speaker, RT 2048 make SAILDR; 1 x Raymarine C120

multifunction navigation display in combination with Chartplotter, Fish Finder, Radar,

GPS functions, 1 x Navtex make ICS, 1 x EPIRB make Sailor, 1 x SART II make Sailor

Key type and Hollow D type fenders, 3 x 250W halogen Searchlight make Norselight,

Fire Detection and Alarm system, Magnetic Compass, sea water cooled air conditioning

1 x 100 kg anchor and 100 m 12,5 mm U2 chain





**UZMAR**  
SHIPYARD

TUG AND WORK BOAT BUILDERS

**“QUALITY  
FIRST”**



→ **M/Tug SMIT PORT SAID – SMIT PORT DAMIETTA**

**ASD 30-60      60 tons bp TERMINAL / SHIP ASSIST / COASTAL TOWAGE / FIRE FIGHTING 1 / OIL RECOVERY TUG**

- BUILDER
- BASIC DUTY
- CLASSIFICATION

- SAFETY REGULATIONS
- DESIGNER
- L.O.A. - Beam
- DRAFT – SPEED
- FUEL – FRESH WATER
- RECOVERED OIL
- TOTAL BHP
- BOLLARD PULL
- MAIN ENGINES
- GENERATOR SET
- COOLING SYSTEM
- PROPULSION
- RUDDERS
- STEERING
- FIRE PUMP

- MONITORS
- FOAM
- TOWING EQUIPMENT

- DECK CRANE
- RESCUE BOAT DAVID
- COMPLEMENT
- OTHER EQUIPMENT

- NAUTICAL AND COMMUNICATION EQUIPMENT

Uzmar Shipbuilding Industry and Trade Inc. Istanbul - Turkey, 2005  
 Terminal – Ship Assist – Coastal Towage – Fire Fighting 1 – Oil Recovery  
 Bureau Veritas 1 + Hull + Machinery + Tug, (FIFI 1) Ship + Oil Recovery Ship + Unrestricted  
 Navigation + AUT-UMS Navigation Area A3  
 SOLAS 1974 – 1978 Int. Convention Load Line – MARPOL 1973/1978  
 Robert Allan Ltd., Vancouver Canada  
 30.25 – 11.00 meters  
 4.55 m – 13.0 knots  
 177,000 liters – 27,000 liters  
 40,000 liters  
 4860 BHP  
 60 metric tons  
 2 x Caterpillar 3516 HD HD DITA B-Rating Rated power 1800 kW @ 1,600 rpm  
 2 x Cummins 6BT 5.9 DM Stamford Alternator 81 kW each 380 V 50 Hz  
 Bloxxm Box Coolers  
 2 x Rolls Royce US 205 CPP Rudder Props each 2400 mm dia.  
 2 x 360 degrees Steerable Thrusters  
 2x Full Follow up combi-lever, one for per drive  
 2 x main engine driven fire pumps each 1500 m3, total 3000 m3  
 Fire Fighting 1 Ship, Water Curtain  
 2 x SKUM each 1200 m3 electrical remote control monitor (air water/foam)  
 16,400 liters  
 1 x Bow Hawser winch 120 tons brake 30 tons pull, 100 m 96 mm dia. line friction clutch  
 1 x Aft Towing winch, 120 tons brake 30 tons pull, double drum 2x 450 m x 46 mm steel line,  
 friction clutch All Make Kraaijeveld, Holland 1 Mampaeey Towing Hook – 1 x Data Hydraulic Towing Pins  
 Foldable 2.2 tons @ 9.3 meters  
 1 x SOLAS approved, make Ned Deck Marine, Holland  
 9 crew ILL airconditioned  
 2 x Compressed Air system, make Atlas Copco, 1 x Biological Treatment System make Facet, Holland,  
 W and D type Fenders make MRI, England, Lighting Fixtures make Aqua Signal, Germany,  
 International voyages A3, 2 x Raytheon Radar, 2 x Sailor Inmarsat C system, 1 x Raytheon Gyro Compass,  
 1 x Raytheon Auto Pilot, 1 x Chart Plotter, 1 x Raytheon DGPS, 1 x Skipper Echo Sounder, 1 x Cassens  
 & Plath Magnetic Compass, 1 x Sailor AIS, 2 x DSC Sailor VHF, 1 x Sailor SSB, 1 x Sailor SART, 1 x Sailor  
 EPIRB, 1 x ICS Navtex, 2 x Portable Sailor BMDSS VHF, 1 x Walker Speed Log, 1 x Walker Wind system

“Made made in Turkey”





→ **“ ASD 3070E ”** TERMINAL - ESCORT - TOWAGE - FIRE FIGHTING TUG

- BUILDER
- BASIC DUTY
- CLASSIFICATION

- SAFETY REGULATIONS
- DESIGNER
- L.O.A - Beam - Depth
- MAX. DRAUGHT - SPEED
- FUEL - FRESH WATER
- BALLAST WATER
- TOTAL INSTALLED POWER
- BOLLARD PULL
- MAIN ENGINES
- GENERATOR SET
- COOLING SYSTEM
- PROPULSION

- RUDDERS
- STEERING
- FIRE PUMP

- MONITORS
- FOAM CAPACITY
- TOWING EQUIPMENT

- DECK CRANE
- RESCUE BOAT DAVID
- COMPLEMENT
- OTHER EQUIPMENT

- NAUTICAL AND COMMUNICATION EQUIPMENT

Uzmar Shipbuilding Industry and Trade Inc., Istanbul, Turkey  
Terminal Ship Assist, Coastal Towing, Escort, Fire Fighting 1, Fresh Water Supply  
Bureau Veritas 1 + Hull + Mach, Escort Tug, AUT - UMS, Fire - Fighting 1, Unrestricted  
Service, Area A2

SOLAS 1974, MARPOL 1973 / 1978, Load Line 1966  
Robert Allan Ltd., Vancouver, Canada

30.25 - 11.75 meters  
8.8 meters - 13 knots  
173.000 - 109.000 liters

49.000 liters  
2 x 2.000 bkW  
70 m tonnes

Caterpillar 3516B HD DITA C Rating 2000bkW @ 1600rpm

2 x Cummins 6BT 5.9 DM Stamford Alternator 81 ekW each @ 1500 rpm 400V, 50 Hz, 3 Ph  
NRF, Holland Box Coolers

2 x Rolls Royce US 255CP or Schottel SRP 1515 CP, with 2.6 meters diameter rudder  
propellers

2 x 360 degrees steerable rudder propellers

2 x full follow-up combi lever, one for each drive

2 x main engine driven double suction, split case, centrifugal pumps, 1 x 1200 m<sup>3</sup> /h, 1 x  
1500 m<sup>3</sup> /h

Fire Fighting 1, water curtain

2 x SKUM each 1200 m<sup>3</sup> /h electrical remote control monitor for water / foam  
16.000 liters

1 x escort rated double drum render / recovery hawser winch, 335 tonnes brake at 1<sup>st</sup>  
layer, 70 tonnes rendering at 20 meters /min on 1<sup>st</sup> layer, 5 tonnes recovering at 100  
meters /min on 4<sup>th</sup> layer, 30 - 100 % adjustable rendering forces, capacity for 130 meters

96 mm line 1 x split drum aft towing winch, 175 tonnes brake, 30 tonnes line pull at 10 m  
/min, capacity for 1 x 700 meters and 1 x 350 meters 52 mm wire, all make Rolls Royce

1 x 70 tonnes SWL towing Hook, make Mampalay, Holland, 1 x Data Hydraulic Towing pins  
Telescopic Foldable type, 2 tonnes @ 9,6 meters, Pallinger, Austria

1 x SOLAS Approved, Ned Deck Marine, Holland

10 crew fully air conditioned

2 x compressed air system, Atlas Copco, 1 x biological sewage treatment system for 10  
person, DVZ, Germany, W section, D type and cylindrical tenders, Lion rubber, Lighting

fixtures, Aqua Signal, Germany

Navigational area A2





TUG AND WORK BOAT BUILDERS

“QUALITY  
FIRST”



UZMAR SHIPBUILDING INDUSTRY AND TRADE INC.

**Shipyard**

KOSBAS, Kocaeli Serbest Bölgesi,  
Yeniköy 41275, İzmit - Kocaeli, Türkiye  
Tel : +90 (262) 361 45 10 (PBX)  
Faks : +90 (262) 341 45 12 (Technical)

**Branch Office**

Rauf Örkay Cad. Baran İş Merkezi  
No: 31 / 2 Tuzla, İstanbul, Türkiye  
Tel : +90 (216) 582 03 12 - 13 - 14  
Faks : +90 (216) 582 03 12



TUG AND WORK BOAT BUILDERS

“QUALITY  
FIRST”



UZMAR SHIPBUILDING INDUSTRY AND TRADE INC.

Shipyard

KOŞEBAŞI, Keleşli Sahilüstü Bölgesi,  
Yeni Köy 41225, İzmit - Kocaeli, Türkiye  
Tel. : +90 (262) 341 45 10 (PBX)  
Faks : +90 (262) 341 45 12 (Technical)

Branch Office

Haşim Çirpaç Cad. (Boran İş Merkezi)  
No: 31/72 Tuzla, İstanbul, Türkiye  
Tel. : +90 (212) 543 03 13 - 14  
Faks : +90 (212) 543 03 12

Web: [www.uzmar.com](http://www.uzmar.com)

E-Mail: [izmir@uzmar.com](mailto:izmir@uzmar.com)