

Marine product guide



Engines and generator sets

Marine product guide

Engines and generator sets

Contents

| | | |
|---|-----|--|
| Introduction | 2 | |
| Rating definitions | 4 | |
| Fuel consumption method | 6 | |
| Engine model name explanation | 7 | |
| | | |
| Propulsion specifications | 9 | |
| Diesel-electric propulsion specifications | 51 | |
| Auxiliary generator specifications | 65 | |
| Generator set specifications | 91 | |
| Gas generator set specifications | 99 | |
| International offices | 107 | |

Mitsubishi marine power

Mitsubishi Heavy Industries (MHI) boasts a long tradition in manufacturing engines, tracing back to the production of Japan's first unit for commercial use in 1917 and spanning both diesel and gasoline types in two – and four – stroke configurations. MHI continues to supply engines for a multitude of applications, from industrial and marine to off-highway and agricultural uses, and in line-ups ranging from as small as 0.3 kW to gigantic 66,000 kW. As a result, MHI now ranks as one of the world's leading engine manufacturers.

To date MHI has supplied more than 120,000 marine diesel engines for both main propulsion and auxiliary applications in ships and boats. They are preferred especially in applications demanding dependable, continuous operation combined with outstanding durability, excellent fuel efficiency and minimal requirements with respect to lubricants and spare parts. This way, MHI marine engines offer the dual advantages of ease of operation and optimum ease of maintenance.

The company's impressive record of engine deliveries is proof of MHI's close and unbroken relationship with marine industries.

Marine engines made in Japan

All MHI marine diesel and gas engines are manufactured to the highest standards, applying state-of-the-art production facilities combined with experienced workmanship. Production is carried out exclusively at the Sagami Works in Japan, a facility conforming to strict ISO-9001 international quality standards as certified by DNV (Det Norske Veritas, Norway).

MHI marine engines have been purpose-designed for marine use. The base of the engine was designed based on marine vessels used in Unrestricted Continuous Duty circumstances.

According to our customers, the engines perform excellent in terms of reliability, durability, fuel consumption, long overhaul and easy maintenance.

Emission regulations

MHI has long been engaged in the production of four-stroke cycle diesels, and already its conventional models incorporate a number of important breakthroughs. Next to that, MHI makes significant investments in the Environment-friendly engines development.

A summary of major regulations which Mitsubishi Heavy Industries adheres to is listed here.

Regulations summary

IMO - Annex VI of MARPOL 73/78 which International Maritime Organization (IMO) has issued, entered into force on 19 May 2005. It applies retroactively to new engines greater than 130 kW and installed on vessels constructed from 1 January 2000 or to those which will undergo a major conversion after that date. The regulation also applies to fixed and floating rigs and to drilling platforms.

EU (Includes CCNR) - The emission limitations are valid for propulsion and auxiliary engines of inland vessels in EU inland waterways (Non-Road Directive 97/68/EC, amended 2010/26/EU). Alternatively, the limitations set by the Central Commission for Navigation on the Rhine (CCNR) may be applied (mutual agreement was reached on 1 July 2007).

The following classifications will appear on subsequent pages to identify the regulation with which the engine will be certified or complaint once placed on the market:

- non emission** – Not compliant to emission regulations.
- IMO-T1** – IMO Tier I compliant; Engine International Air Pollution Prevention (EIAPP) certificates available. IMO Tier I is available for replacement only.
- IMO-T2** – IMO Tier II compliant; Engine International Air Pollution Prevention (EIAPP) certificates available.
- IMO-T3** – For IMO Tier III solutions, please contact Mitsubishi Turbocharger and Engine Europe B.V.
- EU-3A** – EU NRMM for inland waterway vessels stage 3A certified (CAT V1:4).
- EU-5** – For future EU stage 5 solutions, please contact Mitsubishi Turbocharger and Engine Europe B.V.
- CCNR-2** – CCNR stage 2 certified.

Classification approvals

Mitsubishi engines are delivered tested and ready for installation on board. We are cooperating with the following major classification societies:

- American Bureau of Shipping (ABS)
- Bureau Veritas (BV)
- China Classification Society (CCS)
- DNV-GL
- Korean Register of Shipping (KR)
- Lloyd's Register (LR)
- Nippon Kaiji Kyokai (NK)
- Registro Italiano Navale (RINA)
- Russian Maritime Register of Shipping (RS)
- Russian River Register (RRR)
- Türk Loydu (TL)

For availability and more information on marine classification society certification, please contact your local distributor or Mitsubishi Turbocharger and Engine Europe B.V.

Propulsion

Unrestricted Continuous Duty (UCD)

Typical operation:

- Allowable load factor is less than 100% of rated power.
- Allowable cruising speed is less than 100% of rated speed.
- Operating hours are unlimited per year.

Typical vessel application:

- Cargo vessels and fishing boats.

Heavy Duty (HD)

Typical operation:

- Allowable load factor is up to 83% of rated power.
- Allowable cruising speed is up to 94% of rated speed.
- 100% of rated power is available intermittently for 8 h per every 24 h operation.
- Operating hours are less than 6,000 h per year.

Typical vessel application:

Working, fishing, tug and ferrie boats and passenger vessels.

Medium Duty (MD)

Typical operation:

- Allowable load factor is up to 75% of rated power.
- Allowable cruising speed is up to 91% of rated speed.
- 100% of rated power is available intermittently for 1 h per every 6 h operation.
- Operating hours are less than 3,000 h per year.

Typical vessel application:

- Pleasure and patrol boats and high performance vessels.

Diesel-electric propulsion

Typical operation:

- Average load factor is 60 - 80% of rated power.
- Operating hours are 3,000 - 6,000 h per year.
- Momentary overload: 110% is available for max. 25 h per year on emergency basis.
- 100% of rated power is available for max. 3 h per every 12 h operation.

Typical vessel application:

- Offshore and inland cargo vessels and ferries.

Auxiliary generator

Main power supply

Typical operation:

- Average load factor is 60 - 80% of rated power.
- Operating hours: 3,000 - 4,000 h per year.
- Momentary overload: 110% is available for governing purpose.

Typical vessel application:

- Fishing boats, ferries, cargo vessels and tankers.

Emergency power supply

Typical operation:

- Average load factor is 60% of rated power.
- Operating hours: up to 500 h per year.

- Overload: 110% can be used for less than 25 h per year.

Typical vessel application:

- Tankers, cargo and cruise vessels.

Gas-electric propulsion

Typical operation:

- Average load factor is 60 - 80% of rated power.
- Operating hours are 3,000 - 6,000 h per year.
- 100% of rated power is available for max. 3 h per every 12 h operation.

Typical vessel application:

- Offshore and inland cargo vessels and ferries.

RATING DEFINITIONS MEDIUM SPEED

Propulsion

Heavy Duty (HD)

Typical operation:

- Allowable load factor is less than 100% of rated power.
- Allowable cruising speed is less than 100% of rated speed.
- Operating hours are less than 8,000 h per year.

Typical vessel application:

- Inland cargo vessels, fishing boats and coasters.

Medium Duty (MD)

Typical operation:

- Allowable load factor is up to 83% of rated power.
- Allowable cruising speed is up to 94% of rated speed.
- 100% of rated power is available intermittently for 4 h per every 12 h operation.
- Operating hours are less than 3,000 h per year.

Typical vessel application:

- Tug and fishing boats.

Light Duty (LD)

Typical operation:

- Allowable load factor is up to 75% of rated power.
- Allowable cruising speed is up to 90% of rated speed.
- 100% of rated power is available intermittently for 1 h per every 6 h operation.
- Operating hours are less than 1,000 h per year.

Typical vessel application:

- Fast vessels with low load.

Heavy Duty Tugboat (HD-T)

Typical operation:

- 100% of rated power is available intermittently for 8 h per every 24 h operation.
- Operating hours are less than 6,000 h per year.
- Average load factor is 60 - 80% of rated power.

Typical vessel application:

- (Harbour) tugboats.

Diesel-electric propulsion

Continuous operation:

- Allowable load factor is less than 100% of rated power.
- Operating hours are unlimited per year.
- Overload: 110% is available for max. 25 h per year on emergency basis.

Typical vessel application:

- Ocean/sea going cargo vessels and tugboats.

Intermittent operation:

- Average load factor is 60 - 80% of rated power.
- 100% of rated power is available intermittently for less than 3 h per every 12 h operation.
- Operating hours: 3,000 - 4,000 h per year.
- Overload: 110% is available for max. 25 h per year on emergency basis.

Typical vessel application:

- Offshore vessels and harbour tugboats.

Auxiliary generator

Main power supply:

- Average load factor is 60 - 80% of rated power.
- 100% of rated power is available intermittently for less than 3 h per every 12 h operation.
- Operating hours: 3,000 - 4,000 h per year.
- Overload: 110% is available for max. 25 h per year on emergency basis.

Typical vessel application:

- Ocean/sea going cargo vessels and tugboats.

FUEL CONSUMPTION METHOD

The fuel consumption varies according to test condition, specification and application of each customer.

To obtain the fuel consumption based on the most typical test condition, we adopted average fuel consumption recommended by ISO 8178 (E3 standard test cycle for propulsion application and D2 for auxiliary applications) except for SU series*. The fuel consumption values published in this marine product guide were calculated taking each steady-state mode into account.

- | | |
|-----------|---|
| E2 | – Test cycle for “constant-speed main propulsion” applications (including diesel-electric drive and all controllable –pitch propeller installations). |
| E3 | – Test cycle for “propeller-law-operated main and propeller-law-operated auxiliary engine” application. |
| D2 | – Test cycle for “constant-speed auxiliary engine” application. |

* SU Series (Medium speed engines) belongs in a different category from our High speed Engine models, SU series indicates fuel consumption value at 100% rated power in g/kWh.

Weighting factors of type E3 ISO 8178 test cycles

| Mode number | 1 | 2 | 3 | 4 |
|------------------|------|------|------|------|
| Power (%) | 100 | 75 | 50 | 25 |
| Weighting factor | 0.20 | 0.50 | 0.15 | 0.15 |

Weighting factors of type D2 ISO 8178 test cycles

| Mode number | 1 | 2 | 3 | 4 | 5 |
|------------------|------|------|------|------|------|
| Power (%) | 100 | 75 | 50 | 25 | 10 |
| Weighting factor | 0.05 | 0.25 | 0.30 | 0.30 | 0.10 |

Fuel consumption is based on ISO 3046/1 with 5% tolerance at rated power, weighing 836 g/liter based on the regulations of JIS (Japanese Industrial Standards) and a LHV of 42,780 kJ/kg, excluding pumps.

ENGINE MODEL NAME EXPLANATION

G S 6 R2 - T2 MPTAW 3L

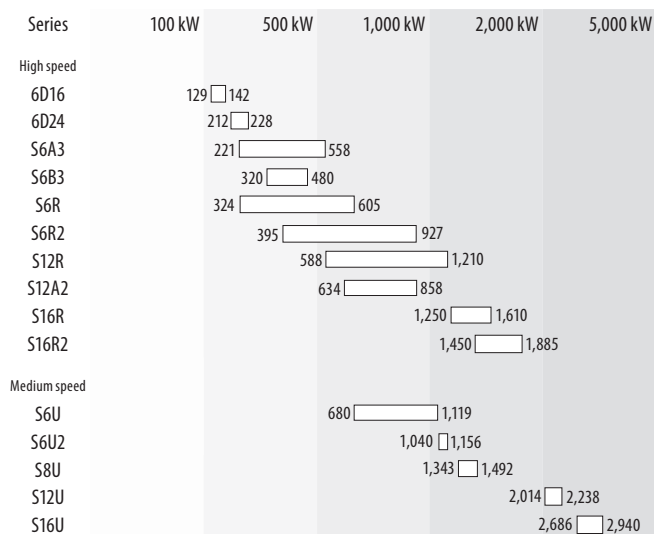
| | |
|--|--|
| Identical number for revision (Power up) | 3L |
| Type of charge air cooling | MPTAW |
| MPTAW | Turbocharged, double cooling, charge air cooler by closed fresh water system controlled by thermostat. |
| MPTK | Turbocharged, double cooling, charge air cooler directly cooled by sea water. |
| MPTA | Turbocharged, single cooling, charge air cooler integrated in jacket water system. |
| Compliant to emission regulations | T2 |
| C2 | CCNR-2 & IMO-T2 |
| T2 | IMO-T2 |
| Z3 | EU-3A & IMO-T2 |
| None | IMO-T1 / non emission |
| Series | R2 |
| No. of cylinders | 6 |
| S - Capital of Sagamihara | S |
| G - Gas | G |

Propulsion specifications



Fishing vessel - Juli-Ane
Partner - West Diesel A.S.

ENGINE MODEL LINE-UP - MARINE PROPULSION



Propulsion products IMO Tier I / non emission - High speed

| Engine model | kW | bhp | rpm | Rating | Emission | Page |
|--|-------|-------|-------|--------|---------------|------|
| <i>Engine (without heat exchanger)</i> | | | | | | |
| 6D16-T | 129 | 173 | 2,700 | HD | not regulated | 13 |
| 6D16-T | 142 | 190 | 2,700 | HD | non emission | 13 |
| 6D24-T | 212 | 284 | 2,200 | HD | non emission | 14 |
| 6D24-TC | 228 | 306 | 2,200 | HD | non emission | 14 |
| S6B3-MPTK | 345 | 462 | 1,940 | UCD | IMO-T1 | 15 |
| S6B3-MPTK | 380 | 509 | 2,000 | HD | IMO-T1 | 15 |
| S6B3-MPTK | 415 | 557 | 2,065 | MD | IMO-T1 | 15 |
| S6A3-MPTK | 405 | 543 | 1,840 | UCD | IMO-T1 | 16 |
| S6A3-MPTK | 445 | 597 | 1,900 | HD | IMO-T1 | 16 |
| S6A3-MPTK | 490 | 657 | 1,960 | MD | IMO-T1 | 16 |
| S6R-MPTK | 470 | 630 | 1,600 | UCD | IMO-T1 | 17 |
| S6R-MPTK | 520 | 697 | 1,650 | HD | IMO-T1 | 17 |
| S6R-MPTK | 605 | 811 | 1,800 | MD | IMO-T1 | 17 |
| S6R2-MPTK | 480 | 643 | 1,350 | UCD | IMO-T1 | 18 |
| S6R2-MPTK | 530 | 710 | 1,400 | HD | IMO-T1 | 18 |
| S6R2-MPTK | 610 | 818 | 1,500 | MD | IMO-T1 | 18 |
| S12A2-MPTK | 701 | 940 | 1,940 | UCD | IMO-T1 | 19 |
| S12A2-MPTK | 776 | 1,040 | 2,000 | HD | IMO-T1 | 19 |
| S12A2-MPTK | 858 | 1,150 | 2,100 | MD | IMO-T1 | 19 |
| S12R-MPTK | 940 | 1,260 | 1,600 | UCD | IMO-T1 | 20 |
| S12R-MPTK | 1,040 | 1,394 | 1,650 | HD | IMO-T1 | 20 |
| S12R-MPTK | 1,210 | 1,622 | 1,800 | MD | IMO-T1 | 20 |
| S16R-MPTK | 1,250 | 1,676 | 1,600 | UCD | IMO-T1 | 21 |
| S16R-MPTK | 1,380 | 1,850 | 1,650 | HD | IMO-T1 | 21 |
| S16R-MPTK | 1,610 | 2,158 | 1,800 | MD | IMO-T1 | 21 |

| Engine model | kW | bhp | rpm | Rating | Emission | Page |
|---|-----|-----|-------|--------|--------------|------|
| Propulsion package (with built-up heat exchanger and sea water pump) | | | | | | |
| S6B3-MPTK | 345 | 463 | 1,940 | UCD | non emission | 22 |
| S6B3-MPTK | 380 | 510 | 2,000 | HD | non emission | 22 |
| S6A3-MPTK | 368 | 494 | 1,840 | UCD | non emission | 23 |
| S6A3-MPTK | 405 | 543 | 1,840 | UCD | non emission | 23 |
| S6A3-MPTK | 445 | 597 | 1,900 | HD | non emission | 23 |
| S6R-MPTK | 405 | 543 | 1,600 | UCD | non emission | 24 |
| S6R-MPTK | 470 | 630 | 1,600 | UCD | non emission | 24 |
| S6R-MPTK | 520 | 697 | 1,650 | HD | non emission | 24 |

Propulsion products - IMO Tier II / CCNR-2 / EU-3A - High speed

| Engine model | kW | bhp | rpm | Rating | Emission | Page |
|--|-------|-------|-------|--------|--------------------------|------|
| Engine (without heat exchanger) | | | | | | |
| 6D16-T | 129 | 173 | 2,700 | HD | not regulated for IMO-T2 | 25 |
| 6D24-TC | 228 | 306 | 2,200 | HD | on request | 26 |
| S6B3-T2MPTAW | 320 | 429 | 1,940 | UCD | IMO-T2 | 27 |
| S6B3-T2MPTAW | 350 | 469 | 2,000 | HD | IMO-T2 | 27 |
| S6A3-MPTAW | 221 | 296 | 1,530 | UCD | IMO-T2 | 28 |
| S6A3-MPTAW | 360 | 483 | 1,840 | UCD | IMO-T2 / CCNR-2 | 28 |
| S6A3-MPTAW | 385 | 516 | 1,800 | MD | CCNR-2 | 28 |
| S6R-MPTAW | 324 | 434 | 1,600 | UCD | IMO-T2 | 29 |
| S6R-MPTAW | 447 | 599 | 1,600 | UCD | IMO-T2 | 29 |
| S6R-(Z3)MPTAW | 470 | 630 | 1,600 | UCD | IMO-T2 / EU-3A | 29 |
| S6R-MPTAW | 520 | 697 | 1,650 | HD | IMO-T2 | 29 |
| S6R-(Z3)MPTAW | 605 | 811 | 1,800 | MD | IMO-T2 / EU-3A | 29 |
| S6R2-T2MPTK | 324 | 435 | 1,350 | UCD | IMO-T2 | 30 |
| S6R2-T2MPTK | 380 | 510 | 1,350 | UCD | IMO-T2 | 30 |
| S6R2-T2MPTK | 395 | 530 | 1,350 | UCD | IMO-T2 | 30 |
| S6R2-T2MPTK | 423 | 567 | 1,350 | UCD | IMO-T2 | 30 |
| S6R2-T2MPTK | 480 | 644 | 1,350 | UCD | IMO-T2 | 30 |
| S6R2-T2MPTK | 530 | 711 | 1,400 | HD | IMO-T2 | 30 |
| S6R2-T2MPTK | 610 | 818 | 1,500 | MD | IMO-T2 | 30 |
| S6R2-T2MPTAW3M | 480 | 644 | 1,350 | HD | IMO-T2 | 31 |
| S6R2-T2MPTAW3M | 555 | 744 | 1,350 | HD | IMO-T2 | 31 |
| S6R2-T2MPTAW3M | 645 | 865 | 1,400 | HD | IMO-T2 | 31 |
| S6R2-T2MPTAW3M | 691 | 927 | 1,400 | HD | IMO-T2 | 31 |
| S12A2-C2MPTK | 634 | 850 | 1,940 | UCD | IMO-T2 / CCNR-2 | 32 |
| S12A2-(Z3)MPTAW | 701 | 940 | 1,940 | UCD | IMO-T2 / EU-3A | 33 |
| S12A2-MPTAW | 776 | 1,041 | 2,000 | HD | IMO-T2 | 33 |
| S12R-MPTAW | 588 | 789 | 1,400 | UCD | IMO-T2 | 34 |
| S12R-MPTAW | 696 | 933 | 1,500 | UCD | IMO-T2 | 34 |
| S12R-MPTAW | 749 | 1,004 | 1,500 | UCD | IMO-T2 | 34 |
| S12R-MPTAW | 749 | 1,004 | 1,600 | UCD | IMO-T2 | 34 |
| S12R-(Z3)MPTAW | 940 | 1,261 | 1,600 | UCD | IMO-T2 / EU-3A | 34 |
| S12R-MPTAW | 1,040 | 1,395 | 1,650 | HD | IMO-T2 | 34 |
| S16R-(Z3)MPTAW | 1,250 | 1,676 | 1,600 | UCD | IMO-T2 / EU-3A | 35 |
| S16R-MPTAW | 1,380 | 1,851 | 1,650 | HD | IMO-T2 | 35 |

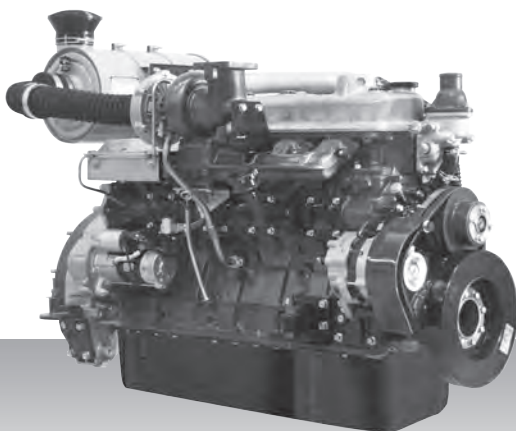
| Engine model | kW | bhp | rpm | Rating | Emission | Page |
|---|-------|-------|-------|--------|----------|------|
| S16R2-T2MPTAW | 1,450 | 1,944 | 1,350 | UCD | IMO-T2 | 36 |
| S16R2-T2MPTAW | 1,600 | 2,146 | 1,400 | HD | IMO-T2 | 36 |
| S16R2-T2MPTAW | 1,885 | 2,528 | 1,500 | MD | IMO-T2 | 36 |
| Propulsion package (with built-up heat exchanger and sea water pump) | | | | | | |
| S6B3-T2MPTK2 | 378 | 507 | 2,001 | HD | IMO-T2 | 37 |
| S6B3-T2MPTK2 | 448 | 601 | 2,001 | MD | IMO-T2 | 37 |
| S6A3-T2MPTK3 | 502 | 673 | 1,900 | HD | IMO-T2 | 38 |
| S6A3-T2MPTK3 | 558 | 748 | 1,900 | MD | IMO-T2 | 38 |
| S6R-T2MPTK | 470 | 630 | 1,600 | UCD | IMO-T2 | 39 |
| S6R-T2MPTK | 520 | 697 | 1,650 | HD | IMO-T2 | 39 |
| S6R-T2MPTK | 605 | 811 | 1,800 | MD | IMO-T2 | 39 |
| S6R2-T2MPTK | 480 | 643 | 1,350 | UCD | IMO-T2 | 40 |
| S6R2-T2MPTK | 530 | 711 | 1,400 | HD | IMO-T2 | 40 |
| S6R2-T2MPTK | 610 | 818 | 1,500 | MD | IMO-T2 | 40 |
| S6R2-T2MPTK3 | 691 | 927 | 1,406 | HD | IMO-T2 | 41 |
| S6R2-T2MPTK3 | 759 | 1,018 | 1,406 | MD | IMO-T2 | 41 |
| S12A2-T2MPTK | 701 | 940 | 1,800 | UCD | IMO-T2 | 42 |
| S12A2-T2MPTK | 776 | 1,041 | 1,860 | HD | IMO-T2 | 42 |
| S12A2-T2MPTK | 858 | 1,151 | 1,920 | MD | IMO-T2 | 42 |
| S12R-T2MPTK | 940 | 1,261 | 1,600 | UCD | IMO-T2 | 43 |
| S12R-T2MPTK | 1,040 | 1,395 | 1,650 | HD | IMO-T2 | 43 |
| S12R-T2MPTK | 1,210 | 1,623 | 1,800 | MD | IMO-T2 | 43 |
| S16R-T2MPTK | 1,250 | 1,676 | 1,600 | UCD | IMO-T2 | 44 |
| S16R-T2MPTK | 1,380 | 1,851 | 1,650 | HD | IMO-T2 | 44 |
| S16R-T2MPTK | 1,610 | 2,159 | 1,800 | MD | IMO-T2 | 44 |
| S16R2-T2MPTK | 1,450 | 1,944 | 1,350 | UCD | IMO-T2 | 45 |
| S16R2-T2MPTK | 1,600 | 2,156 | 1,400 | HD | IMO-T2 | 45 |
| S16R2-T2MPTK | 1,885 | 2,528 | 1,500 | MD | IMO-T2 | 45 |

Propulsion products - IMO Tier II / CCNR-2 - Medium speed

| Engine model | kW | bhp | rpm | Rating | Emission | Page |
|--------------|-------|-------|-------|--------|-----------------|------|
| S6U-C2MPTK | 680 | 912 | 1,100 | HD | IMO-T2 | 46 |
| S6U-C2MPTK | 719 | 964 | 1,100 | HD | IMO-T2 | 46 |
| S6U-C2MPTK | 749 | 1,004 | 1,100 | HD | IMO-T2 | 46 |
| S6U-C2MPTK | 1,007 | 1,350 | 1,060 | HD | IMO-T2 / CCNR-2 | 46 |
| S6U-C2MPTK | 1,103 | 1,479 | 1,150 | HD-T | IMO-T2 / CCNR-2 | 46 |
| S6U-C2MPTK | 1,119 | 1,499 | 1,100 | MD | IMO-T2 / CCNR-2 | 46 |
| S6U2-MPTK | 1,040 | 1,395 | 930 | HD | IMO-T2 / CCNR-2 | 47 |
| S6U2-MPTK | 1,156 | 1,550 | 960 | MD | IMO-T2 / CCNR-2 | 47 |
| S8U-C2MPTK | 1,343 | 1,801 | 1,060 | HD | IMO-T2 / CCNR-2 | 48 |
| S8U-C2MPTK | 1,470 | 1,971 | 1,150 | HD-T | IMO-T2 / CCNR-2 | 48 |
| S8U-C2MPTK | 1,492 | 2,001 | 1,100 | MD | IMO-T2 / CCNR-2 | 48 |
| S12U-MPTK | 2,014 | 2,701 | 1,060 | HD | IMO-T2 | 49 |
| S12U-MPTK | 2,205 | 2,957 | 1,150 | HD-T | IMO-T2 | 49 |
| S12U-MPTK | 2,238 | 3,001 | 1,100 | MD | IMO-T2 | 49 |
| S16U-MPTK | 2,686 | 3,602 | 1,060 | HD | IMO-T2 | 50 |
| S16U-MPTK | 2,940 | 3,943 | 1,150 | HD-T | IMO-T2 | 50 |
| S16U-MPTK | 2,984 | 4,002 | 1,100 | MD | IMO-T2 | 50 |

Propulsion - IMO Tier I / non emission
High speed - Engine

6D16-T



6-cylinder, 4-cycle, water cooled diesel engine,
with direct-injection, turbocharger and air-cooler.

Bore x stroke (mm) : 118 x 115

Displacement (l) : 7.54

Commercial rating

| kW | bhp | rpm | Rating | Fuel cons. l/hr* | Emission |
|-----|-----|-------|--------|------------------|---------------|
| 129 | 173 | 2,700 | HD | on request | not regulated |
| 142 | 190 | 2,700 | HD | 30.5 | non emission |

*Average fuel consumption according to ISO, see page 6.
Specifications / data subject to change without prior notice.

Product dimensions & dry weight

L (mm) : 1,335

W (mm) : 731

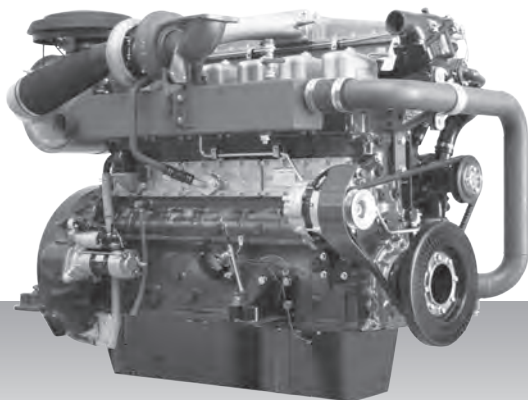
H (mm) : 830

Dry weight (kg) : 575

Dimensions and weight are based on standard configuration.

Propulsion - IMO Tier I / non emission
High speed - Engine

6D24-T(C)



6-cylinder, 4-cycle, water cooled diesel engine,
with direct-injection, turbocharger and air-cooler.

Bore x stroke (mm) : 130 x 150

Displacement (l) : 11.95

Commercial rating

| kW | bhp | rpm | Rating | Fuel cons. l/hr* | Emission |
|-----|-----|-------|--------|------------------|--------------|
| 212 | 284 | 2,200 | HD | 42.6 | non emission |
| 228 | 306 | 2,200 | HD | on request | non emission |

*Average fuel consumption according to ISO, see page 6.
Specifications / data subject to change without prior notice.

Product dimensions & dry weight

L (mm) : 1,535

W (mm) : 880

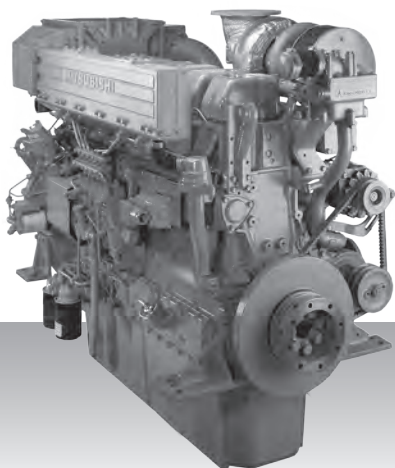
H (mm) : 1,235

Dry weight (kg) : 1,209

Dimensions and weight are based on standard configuration.

Propulsion - IMO Tier I / non emission
High speed - Engine

S6B3-MPTK



6-cylinder, 4-cycle, water cooled diesel engine,
with direct-injection, turbocharger and air-cooler.

Bore x stroke (mm) : 135 x 170

Displacement (l) : 14.60

Commercial rating

| kW | bhp | rpm | Rating | Fuel cons. l/hr* | Emission |
|-----|-----|-------|--------|------------------|----------|
| 345 | 463 | 1,940 | UCD | 59.6 | IMO-T1 |
| 380 | 510 | 2,000 | HD | 68.0 | IMO-T1 |
| 415 | 557 | 2,065 | MD | on request | IMO-T1 |

*Average fuel consumption according to ISO, see page 6.
Specifications / data subject to change without prior notice.

Product dimensions & dry weight

L (mm) : 1,834

W (mm) : 873

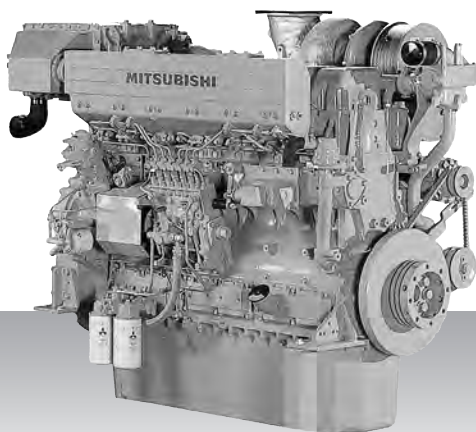
H (mm) : 1,331

Dry weight (kg) : 1,300

Dimensions and weight are based on standard configuration.

Propulsion - IMO Tier I / non emission
High speed - Engine

S6A3-MPTK



6-cylinder, 4-cycle, water cooled diesel engine,
with direct-injection, turbocharger and air-cooler.

Bore x stroke (mm) : 150 x 175

Displacement (l) : 18.56

Commercial rating

| kW | bhp | rpm | Rating | Fuel cons. l/hr* | Emission |
|-----|-----|-------|--------|------------------|----------|
| 405 | 543 | 1,840 | UCD | 69.8 | IMO-T1 |
| 445 | 597 | 1,900 | HD | 78.3 | IMO-T1 |
| 490 | 657 | 1,960 | MD | 85.9 | IMO-T1 |

*Average fuel consumption according to ISO, see page 6.
Specifications / data subject to change without prior notice.

Product dimensions & dry weight

L (mm) : 2,037

W (mm) : 927

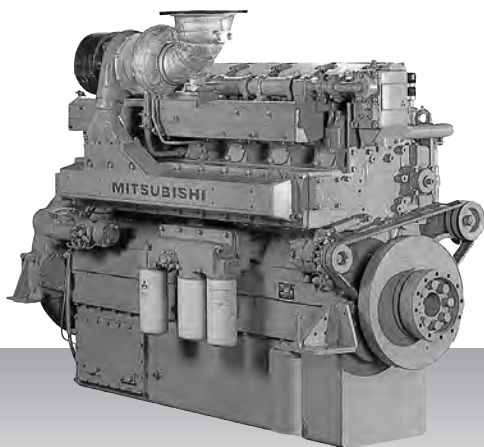
H (mm) : 1,371

Dry weight (kg) : 1,900

Dimensions and weight are based on standard configuration.

Propulsion - IMO Tier I / non emission
High speed - Engine

S6R-MPTK



6-cylinder, 4-cycle, water cooled diesel engine,
with direct-injection, turbocharger and air-cooler.

Bore x stroke (mm) : 170 x 180

Displacement (l) : 24.51

Commercial rating

| kW | bhp | rpm | Rating | Fuel cons. l/hr* | Emission |
|-----|-----|-------|--------|------------------|----------|
| 470 | 630 | 1,600 | UCD | 79.0 | IMO-T1 |
| 520 | 697 | 1,650 | HD | 87.9 | IMO-T1 |
| 605 | 811 | 1,800 | MD | 101.3 | IMO-T1 |

*Average fuel consumption according to ISO, see page 6.
Specifications / data subject to change without prior notice.

Product dimensions & dry weight

L (mm) : 1,811

W (mm) : 1,108

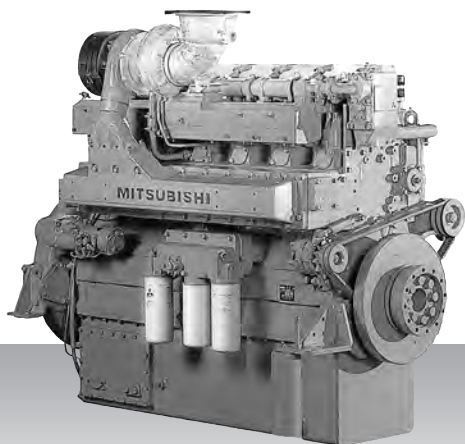
H (mm) : 1,614

Dry weight (kg) : 2,830

Dimensions and weight are based on standard configuration.

Propulsion - IMO Tier I / non emission
High speed - Engine

S6R2-MPTK



6-cylinder, 4-cycle, water cooled diesel engine,
with direct-injection, turbocharger and air-cooler.

Bore x stroke (mm) : 170 x 220

Displacement (l) : 29.96

Commercial rating

| kW | bhp | rpm | Rating | Fuel cons. l/hr* | Emission |
|-----|-----|-------|--------|------------------|----------|
| 480 | 644 | 1,350 | UCD | 78.9 | IMO-T1 |
| 530 | 711 | 1,400 | HD | 86.6 | IMO-T1 |
| 610 | 818 | 1,500 | MD | 100.4 | IMO-T1 |

*Average fuel consumption according to ISO, see page 6.
Specifications / data subject to change without prior notice.

Product dimensions & dry weight

L (mm) : 1,811

W (mm) : 1,108

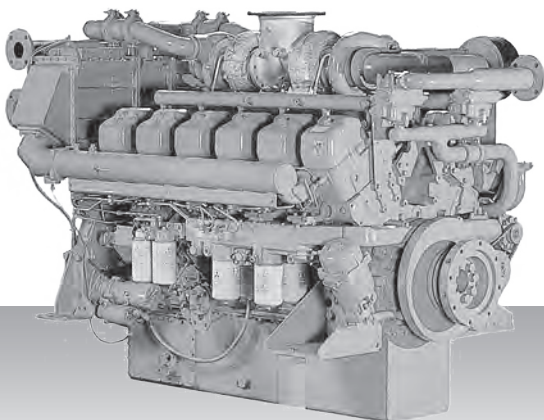
H (mm) : 1,694

Dry weight (kg) : 2,960

Dimensions and weight are based on standard configuration.

Propulsion - IMO Tier I / non emission
High speed - Engine

S12A2-MPTK



6-cylinder, 4-cycle, water cooled diesel engine,
with direct-injection, turbocharger and air-cooler.

Bore x stroke (mm) : 150 x 160

Displacement (l) : 33.93

Commercial rating

| kW | bhp | rpm | Rating | Fuel cons. l/hr* | Emission |
|-----|-------|-------|--------|------------------|----------|
| 701 | 940 | 1,940 | UCD | 122.3 | IMO-T1 |
| 776 | 1,041 | 2,000 | HD | 136.6 | IMO-T1 |
| 858 | 1,151 | 2,100 | MD | 152.7 | IMO-T1 |

*Average fuel consumption according to ISO, see page 6.
Specifications / data subject to change without prior notice.

Product dimensions & dry weight

L (mm) : 2,291

W (mm) : 1,418

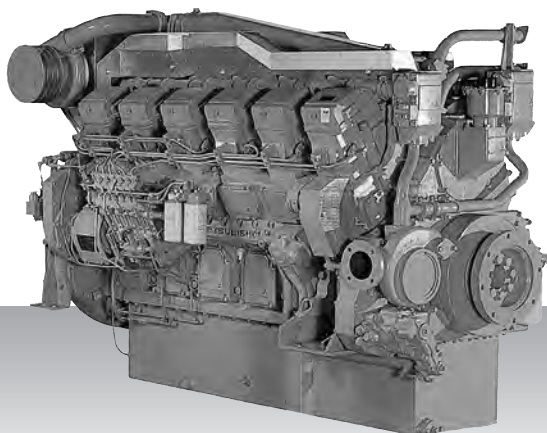
H (mm) : 1,596

Dry weight (kg) : 3,720

Dimensions and weight are based on standard configuration.

Propulsion - IMO Tier I / non emission
High speed - Engine

S12R-MPTK



12-cylinder, 4-cycle, water cooled diesel engine,
with direct-injection, turbocharger and air-cooler.

Bore x stroke (mm) : 170 x 180

Displacement (l) : 49.03

Commercial rating

| kW | bhp | rpm | Rating | Fuel cons. l/hr* | Emission |
|-------|-------|-------|--------|------------------|----------|
| 940 | 1,261 | 1,600 | UCD | 158.0 | IMO-T1 |
| 1,040 | 1,395 | 1,650 | HD | 176.5 | IMO-T1 |
| 1,210 | 1,623 | 1,800 | MD | 202.9 | IMO-T1 |

*Average fuel consumption according to ISO, see page 6.
Specifications / data subject to change without prior notice.

Product dimensions & dry weight

L (mm) : 2,376

W (mm) : 1,512

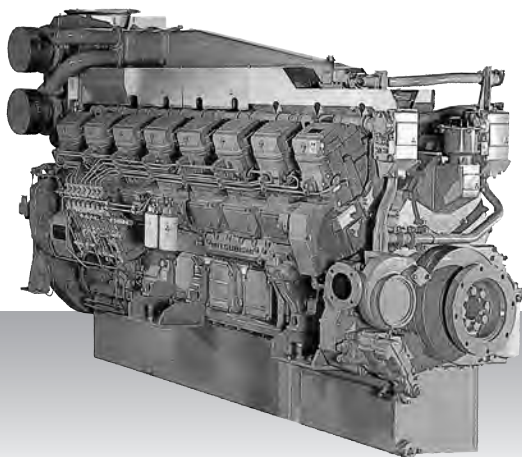
H (mm) : 1,731

Dry weight (kg) : 5,320

Dimensions and weight are based on standard configuration.

Propulsion - IMO Tier I / non emission
High speed - Engine

S16R-MPTK



16-cylinder, 4-cycle, water cooled diesel engine,
with direct-injection, turbocharger and air-cooler.

Bore x stroke (mm) : 170 x 180

Displacement (l) : 65.37

Commercial rating

| kW | bhp | rpm | Rating | Fuel cons. l/hr* | Emission |
|-------|-------|-------|--------|------------------|----------|
| 1,250 | 1,676 | 1,600 | UCD | 206.0 | IMO-T1 |
| 1,380 | 1,851 | 1,650 | HD | 234.4 | IMO-T1 |
| 1,610 | 2,159 | 1,800 | MD | 268.7 | IMO-T1 |

*Average fuel consumption according to ISO, see page 6.
Specifications / data subject to change without prior notice.

Product dimensions & dry weight

L (mm) : 2,931

W (mm) : 1,512

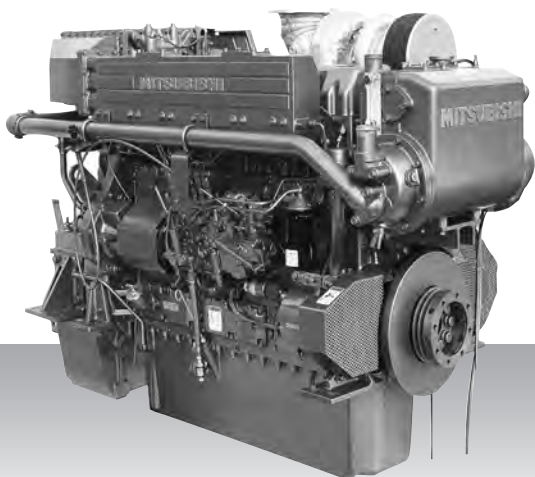
H (mm) : 1,960

Dry weight (kg) : 6,780

Dimensions and weight are based on standard configuration.

Propulsion - IMO Tier I / non emission
High speed - Propulsion package

S6B3-MPTK



6-cylinder, 4-cycle, water cooled diesel engine, with direct-injection, turbocharger, air-cooler, build-up heat exchanger and sea water pump.

Bore x stroke (mm) : 135 x 170

Displacement (l) : 14.60

Commercial rating

| kW | bhp | rpm | Rating | Fuel cons. l/hr* | Emission |
|-----|-----|-------|--------|------------------|--------------|
| 345 | 463 | 1,940 | UCD | on request | non emission |
| 380 | 510 | 2,000 | HD | on request | non emission |

*Average fuel consumption according to ISO, see page 6.
Specifications / data subject to change without prior notice.

Product dimensions & dry weight

L (mm) : 1,967

W (mm) : 984

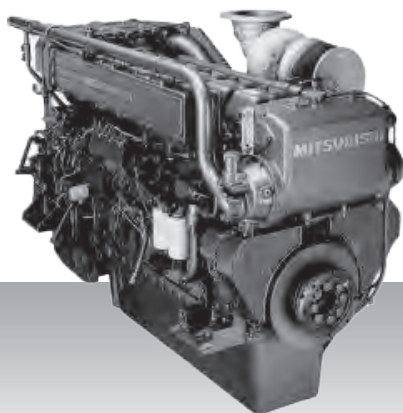
H (mm) : 1,330

Dry weight (kg) : 1,400

Dimensions and weight are based on standard configuration.

Propulsion - IMO Tier I / non emission
High speed - Propulsion package

S6A3-MPTK



6-cylinder, 4-cycle, water cooled diesel engine, with direct-injection, turbocharger, air-cooler, build-up heat exchanger and sea water pump.

Bore x stroke (mm) : 150 x 175

Displacement (l) : 18.50

Commercial rating

| kW | bhp | rpm | Rating | Fuel cons. l/hr* | Emission |
|-----|-----|-------|--------|------------------|--------------|
| 368 | 493 | 1,840 | UCD | on request | non emission |
| 405 | 543 | 1,840 | UCD | on request | non emission |
| 445 | 597 | 1,900 | HD | on request | non emission |

*Average fuel consumption according to ISO, see page 6.
Specifications / data subject to change without prior notice.

Product dimensions & dry weight

L (mm) : 2,189

W (mm) : 1,127

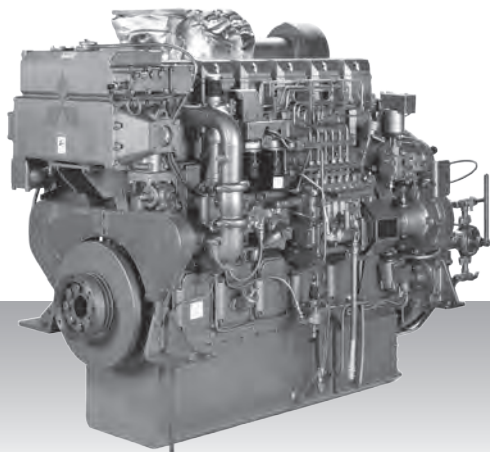
H (mm) : 1,421

Dry weight (kg) : 2,100

Dimensions and weight are based on standard configuration.

Propulsion - IMO Tier I / non emission
High speed - Propulsion package

S6R-MPTK



6-cylinder, 4-cycle, water cooled diesel engine, with direct-injection, turbocharger, air-cooler, build-up heat exchanger and sea water pump.

Bore x stroke (mm) : 170 x 180

Displacement (l) : 24.51

Commercial rating

| kW | bhp | rpm | Rating | Fuel cons. l/hr* | Emission |
|-----|-----|-------|--------|------------------|--------------|
| 405 | 543 | 1,600 | UCD | on request | non emission |
| 470 | 630 | 1,600 | UCD | on request | non emission |
| 520 | 697 | 1,650 | HD | on request | non emission |

*Average fuel consumption according to ISO, see page 6.
Specifications / data subject to change without prior notice.

Product dimensions & dry weight

L (mm) : 2,122

W (mm) : 1,202

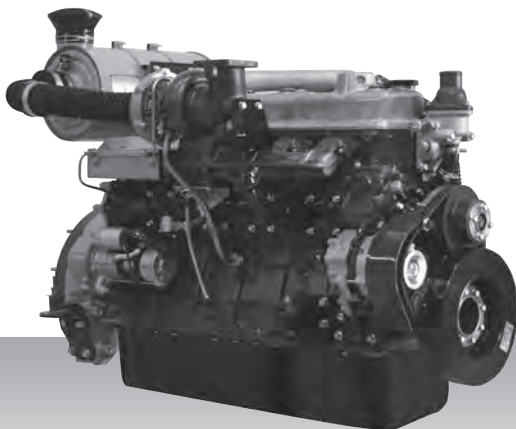
H (mm) : 1,615

Dry weight (kg) : 2,950

Dimensions and weight are based on standard configuration.

Propulsion - IMO Tier II / CCNR-2 / EU-3A
High speed - Engine

6D16-T



6-cylinder, 4-cycle, water cooled diesel engine,
with direct-injection, turbocharger and air-cooler.

Bore x stroke (mm) : 118 x 115
Displacement (l) : 7.54

Commercial rating

| kW | bhp | rpm | Rating | Fuel cons. l/hr* | Emission |
|-----|-----|-------|--------|------------------|-----------------------------|
| 129 | 173 | 2,700 | HD | on request | not regulated for IMO-T2 |

*Average fuel consumption according to ISO, see page 6.
Specifications / data subject to change without prior notice.

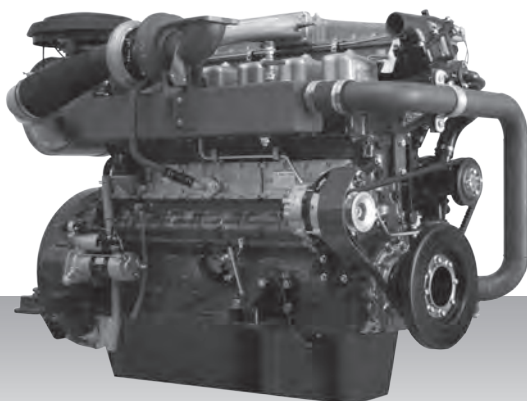
Product dimensions & dry weight

L (mm) : 1,335
W (mm) : 731
H (mm) : 830
Dry weight (kg) : 575

Dimensions and weight are based on standard configuration.

Propulsion - IMO Tier II / CCNR-2 / EU-3A
High speed - Engine

6D24-TC



6-cylinder, 4-cycle, water cooled diesel engine,
with direct-injection, turbocharger and air-cooler.

Bore x stroke (mm) : 130 x 150

Displacement (l) : 11.95

Commercial rating

| kW | bhp | rpm | Rating | Fuel cons. l/hr* | Emission |
|-----|-----|-------|--------|------------------|------------|
| 228 | 306 | 2,200 | HD | on request | on request |

*Average fuel consumption according to ISO, see page 6.
Specifications / data subject to change without prior notice.

Product dimensions & dry weight

L (mm) : 1,535

W (mm) : 880

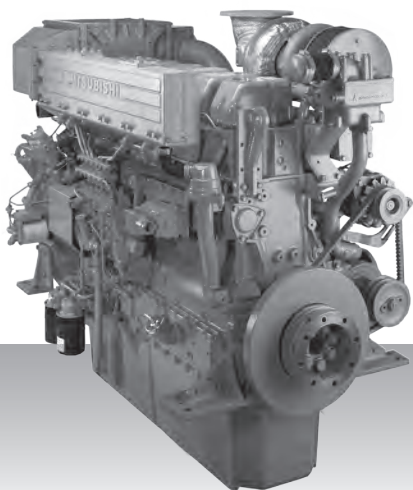
H (mm) : 1,235

Dry weight (kg) : 1,209

Dimensions and weight are based on standard configuration.

Propulsion - IMO Tier II / CCNR-2 / EU-3A
High speed - Engine

S6B3-T2MPTAW



6-cylinder, 4-cycle, water cooled diesel engine,
with direct-injection, turbocharger and air-cooler.

Bore x stroke (mm) : 135 x 170

Displacement (l) : 14.60

Commercial rating

| kW | bhp | rpm | Rating | Fuel cons. l/hr* | Emission |
|-----|-----|-------|--------|------------------|----------|
| 320 | 429 | 1,940 | UCD | on request | IMO-T2 |
| 350 | 469 | 2,000 | HD | on request | IMO-T2 |

*Average fuel consumption according to ISO, see page 6.
Specifications / data subject to change without prior notice.

Product dimensions & dry weight

L (mm) : 1,465

W (mm) : 873

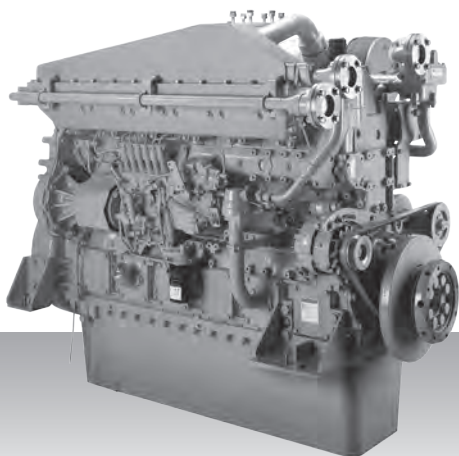
H (mm) : 1,331

Dry weight (kg) : 1,300

Dimensions and weight are based on standard configuration.

Propulsion - IMO Tier II / CCNR-2 / EU-3A
High speed - Engine

S6A3-MPTAW



6-cylinder, 4-cycle, water cooled diesel engine,
with direct-injection, turbocharger and air-cooler.

Bore x stroke (mm) : 150 x 175

Displacement (l) : 18.56

Commercial rating

| kW | bhp | rpm | Rating | Fuel cons. l/hr* | Emission |
|-----|-----|-------|--------|------------------|-----------------|
| 221 | 296 | 1,530 | UCD | on request | IMO-T2 |
| 360 | 483 | 1,840 | UCD | 65.7 | IMO-T2 / CCNR-2 |
| 385 | 516 | 1,800 | MD | on request | CCNR-2 |

*Average fuel consumption according to ISO, see page 6.
Specifications / data subject to change without prior notice.

Product dimensions & dry weight

L (mm) : 1,636

W (mm) : 1,036

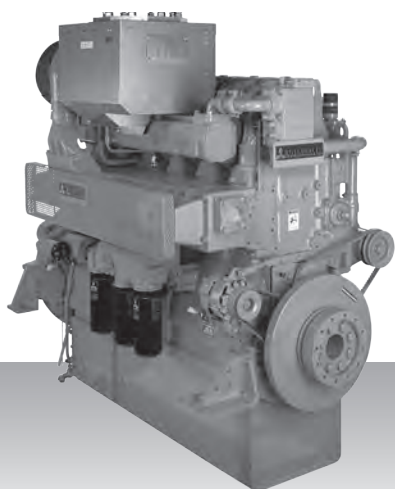
H (mm) : 1,421

Dry weight (kg) : 1,900

Dimensions and weight are based on standard configuration.

Propulsion - IMO Tier II / CCNR-2 / EU-3A
High speed - Engine

S6R-(Z3)MPTAW



6-cylinder, 4-cycle, water cooled diesel engine,
with direct-injection, turbocharger and air-cooler.

Bore x stroke (mm) : 170 x 180

Displacement (l) : 24.51

Commercial rating

| kW | bhp | rpm | Rating | Fuel cons. l/hr* | Emission |
|-----|-----|-------|--------|------------------|----------------|
| 324 | 434 | 1,600 | UCD | on request | IMO-T2 |
| 447 | 599 | 1,600 | UCD | on request | IMO-T2 |
| 470 | 630 | 1,600 | UCD | 80.5 | IMO-T2 / EU-3A |
| 520 | 697 | 1,650 | HD | 89.0 | IMO-T2 / EU-3A |
| 605 | 811 | 1,800 | MD | on request | IMO-T2 / EU-3A |

*Average fuel consumption according to ISO, see page 6.
Specifications / data subject to change without prior notice.

Product dimensions & dry weight

L (mm) : 1,786

W (mm) : 1,220

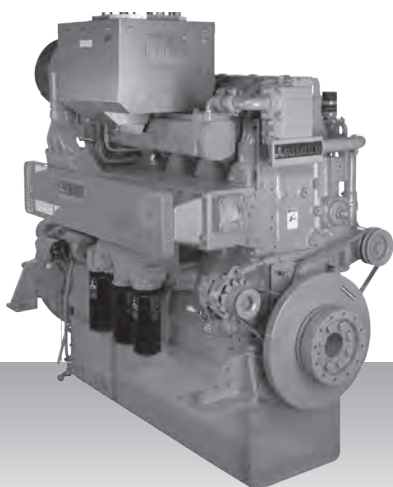
H (mm) : 1,650

Dry weight (kg) : 2,913

Dimensions and weight are based on standard configuration.

Propulsion - IMO Tier II / CCNR-2 / EU-3A
High speed - Engine

S6R2-T2MPTK



6-cylinder, 4-cycle, water cooled diesel engine,
with direct-injection, turbocharger and air-cooler.

Bore x stroke (mm) : 170 x 220

Displacement (l) : 29.96

Commercial rating

| kW | bhp | rpm | Rating | Fuel cons. l/hr* | Emission |
|-----|-----|-------|--------|------------------|----------|
| 324 | 435 | 1,350 | UCD | on request | IMO-T2 |
| 380 | 510 | 1,350 | UCD | on request | IMO-T2 |
| 395 | 530 | 1,350 | UCD | on request | IMO-T2 |
| 423 | 567 | 1,350 | UCD | on request | IMO-T2 |
| 480 | 644 | 1,350 | UCD | 79.9 | IMO-T2 |
| 530 | 711 | 1,400 | HD | 88.7 | IMO-T2 |
| 610 | 818 | 1,500 | MD | 101.5 | IMO-T2 |

*Average fuel consumption according to ISO, see page 6.
Specifications / data subject to change without prior notice.

Product dimensions & dry weight

L (mm) : 2,207

W (mm) : 1,156

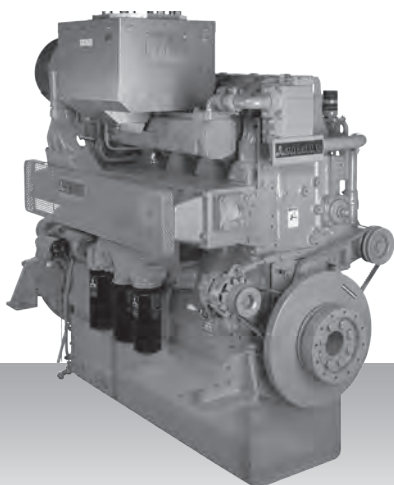
H (mm) : 1,695

Dry weight (kg) : 3,000

Dimensions and weight are based on standard configuration.

Propulsion - IMO Tier II / CCNR-2 / EU-3A
High speed - Engine

S6R2-T2MPTAW3M



6-cylinder, 4-cycle, water cooled diesel engine,
with direct-injection, turbocharger and air-cooler.

Bore x stroke (mm) : 170 x 220

Displacement (l) : 29.96

Commercial rating

| kW | bhp | rpm | Rating | Fuel cons. l/hr* | Emission |
|-----|-----|-------|--------|------------------|----------|
| 480 | 644 | 1,350 | HD | on request | IMO-T2 |
| 555 | 744 | 1,350 | HD | on request | IMO-T2 |
| 645 | 865 | 1,400 | HD | on request | IMO-T2 |
| 691 | 927 | 1,406 | HD | on request | IMO-T2 |

*Average fuel consumption according to ISO, see page 6.
Specifications / data subject to change without prior notice.

Product dimensions & dry weight

L (mm) : 1,786

W (mm) : 1,220

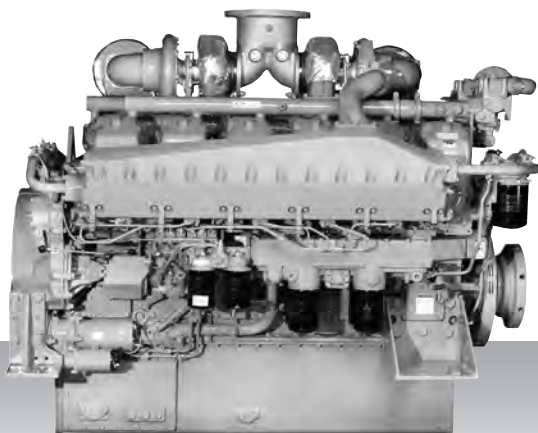
H (mm) : 1,650

Dry weight (kg) : 2,913

Dimensions and weight are based on standard configuration.

Propulsion - IMO Tier II / CCNR-2 / EU-3A
High speed - Engine

S12A2-C2MPTK



12-cylinder, 4-cycle, water cooled diesel engine,
with direct-injection, turbocharger and air-cooler.

Bore x stroke (mm) : 150 x 160

Displacement (l) : 33.93

Commercial rating

| kW | bhp | rpm | Rating | Fuel cons. l/hr* | Emission |
|-----|-----|-------|--------|------------------|-----------------|
| 634 | 850 | 1,940 | UCD | 111.9 | IMO-T2 / CCNR-2 |

*Average fuel consumption according to ISO, see page 6.
Specifications / data subject to change without prior notice.

Product dimensions & dry weight

L (mm) : 1,948

W (mm) : 1,442

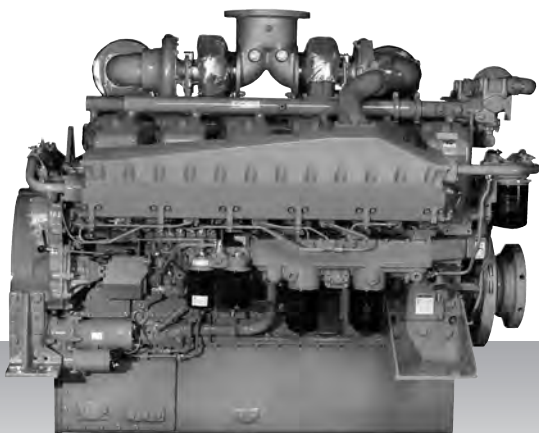
H (mm) : 1,596

Dry weight (kg) : 3,380

Dimensions and weight are based on standard configuration.

Propulsion - IMO Tier II / CCNR-2 / EU-3A
High speed - Engine

S12A2-(Z3)MPTAW



12-cylinder, 4-cycle, water cooled diesel engine,
with direct-injection, turbocharger and air-cooler.

Bore x stroke (mm) : 150 x 160

Displacement (l) : 33.93

Commercial rating

| kW | bhp | rpm | Rating | Fuel cons. l/hr* | Emission |
|-----|-------|-------|--------|------------------|----------------|
| 701 | 940 | 1,940 | UCD | 119.0 | IMO-T2 / EU-3A |
| 776 | 1,041 | 2,000 | HD | 131.5 | IMO-T2 |

*Average fuel consumption according to ISO, see page 6.
Specifications / data subject to change without prior notice.

Product dimensions & dry weight

L (mm) : 2,059

W (mm) : 1,654

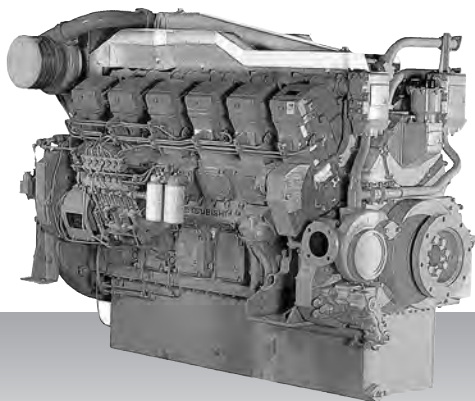
H (mm) : 1,596

Dry weight (kg) : 3,840

Dimensions and weight are based on standard configuration.

Propulsion - IMO Tier II / CCNR-2 / EU-3A
High speed - Engine

S12R-(Z3)MPTAW



12-cylinder, 4-cycle, water cooled diesel engine,
with direct-injection, turbocharger and air-cooler.

Bore x stroke (mm) : 170 x 180
Displacement (l) : 49.03

Commercial rating

| kW | bhp | rpm | Rating | Fuel cons. l/hr* | Emission |
|-------|-------|-------|--------|------------------|----------------|
| 588 | 789 | 1,400 | UCD | on request | IMO-T2 |
| 696 | 933 | 1,500 | UCD | on request | IMO-T2 |
| 749 | 1,004 | 1,500 | UCD | on request | IMO-T2 |
| 749 | 1,004 | 1,600 | UCD | on request | IMO-T2 |
| 940 | 1,261 | 1,600 | UCD | 160.5 | IMO-T2 / EU-3A |
| 1,040 | 1,395 | 1,650 | HD | 178.7 | IMO-T2 / EU-3A |

*Average fuel consumption according to ISO, see page 6.
Specifications / data subject to change without prior notice.

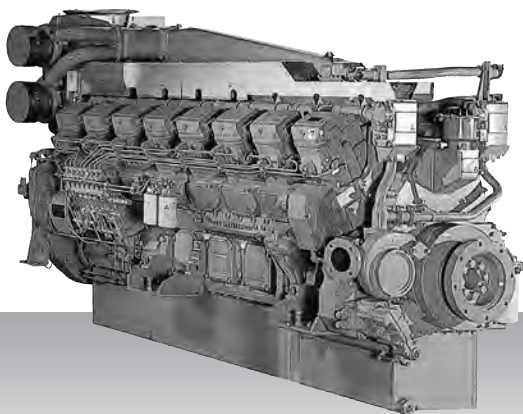
Product dimensions & dry weight

L (mm) : 2,416
W (mm) : 1,585
H (mm) : 1,807
Dry weight (kg) : 5,470

Dimensions and weight are based on standard configuration.

Propulsion - IMO Tier II / CCNR-2 / EU-3A
High speed - Engine

S16R-(Z3)MPTAW



16-cylinder, 4-cycle, water cooled diesel engine,
with direct-injection, turbocharger and air-cooler.

Bore x stroke (mm) : 170 x 180

Displacement (l) : 65.37

Commercial rating

| kW | bhp | rpm | Rating | Fuel cons. l/hr* | Emission |
|-------|-------|-------|--------|------------------|----------------|
| 1,250 | 1,676 | 1,600 | UCD | 214.1 | IMO-T2 / EU-3A |
| 1,380 | 1,851 | 1,650 | HD | 236.6 | IMO-T2 |

*Average fuel consumption according to ISO, see page 6.
Specifications / data subject to change without prior notice.

Product dimensions & dry weight

L (mm) : 2,971

W (mm) : 1,585

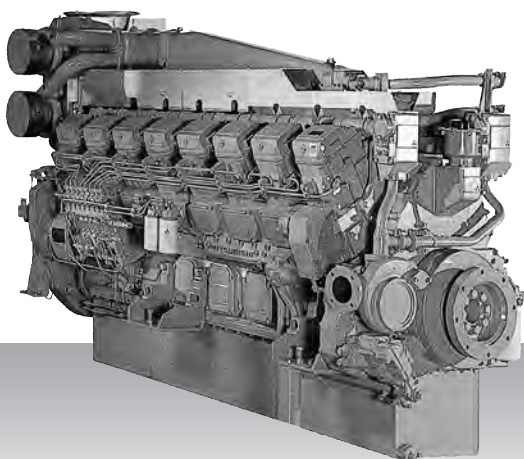
H (mm) : 1,960

Dry weight (kg) : 6,950

Dimensions and weight are based on standard configuration.

Propulsion - IMO Tier II / CCNR-2 / EU-3A
High speed - Engine

S16R2-T2MPTAW



16-cylinder, 4-cycle, water cooled diesel engine,
with direct-injection, turbocharger and air-cooler.

Bore x stroke (mm) : 170 x 220

Displacement (l) : 79.90

Commercial rating

| kW | bhp | rpm | Rating | Fuel cons. l/hr* | Emission |
|-------|-------|-------|--------|------------------|----------|
| 1,450 | 1,944 | 1,350 | UCD | on request | IMO-T2 |
| 1,600 | 2,146 | 1,400 | HD | 287.9 | IMO-T2 |
| 1,885 | 2,528 | 1,500 | MD | on request | IMO-T2 |

*Average fuel consumption according to ISO, see page 6.
Specifications / data subject to change without prior notice.

Product dimensions & dry weight

L (mm) : 2,946

W (mm) : 1,525

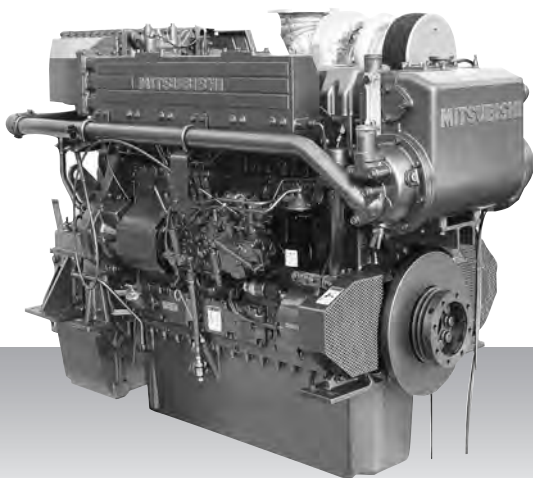
H (mm) : 2,030

Dry weight (kg) : 7,750

Dimensions and weight are based on standard configuration.

Propulsion - IMO Tier II / CCNR-2 / EU-3A
High speed - Propulsion package

S6B3-T2MPTK2



6-cylinder, 4-cycle, water cooled diesel engine, with direct-injection, turbocharger, air-cooler, built-up heat exchanger and sea water pump.

Bore x stroke (mm) : 135 x 170
Displacement (l) : 14.60

Commercial rating

| kW | bhp | rpm | Rating | Fuel cons. l/hr* | Emission |
|-----|-----|-------|--------|------------------|----------|
| 378 | 507 | 2,001 | HD | on request | IMO-T2 |
| 448 | 601 | 2,001 | MD | 77.9 | IMO-T2 |

*Average fuel consumption according to ISO, see page 6.
Specifications / data subject to change without prior notice.

Product dimensions & dry weight

L (mm) : 1,967
W (mm) : 984
H (mm) : 1,330
Dry weight (kg) : 1,400

Dimensions and weight are based on standard configuration.

Propulsion - IMO Tier II / CCNR-2 / EU-3A
High speed - Propulsion package

S6A3-T2MPTK3



6-cylinder, 4-cycle, water cooled diesel engine, with direct-injection, turbocharger, air-cooler, built-up heat exchanger and sea water pump.

Bore x stroke (mm) : 150 x 175
Displacement (l) : 18.50

Commercial rating

| kW | bhp | rpm | Rating | Fuel cons. l/hr* | Emission |
|-----|-----|-------|--------|------------------|----------|
| 502 | 673 | 1,900 | HD | on request | IMO-T2 |
| 558 | 748 | 1,900 | MD | on request | IMO-T2 |

*Average fuel consumption according to ISO, see page 6.
Specifications / data subject to change without prior notice.

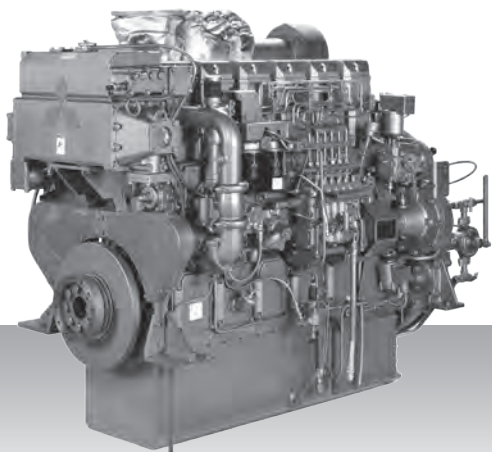
Product dimensions & dry weight

L (mm) : 2,189
W (mm) : 1,127
H (mm) : 1,421
Dry weight (kg) : 2,100

Dimensions and weight are based on standard configuration.

Propulsion - IMO Tier II / CCNR-2 / EU-3A
High speed - Propulsion package

S6R-T2MPTK



6-cylinder, 4-cycle, water cooled diesel engine, with direct-injection, turbocharger, air-cooler, built-up heat exchanger and sea water pump.

Bore x stroke (mm) : 170 x 180
Displacement (l) : 24.51

Commercial rating

| kW | bhp | rpm | Rating | Fuel cons. l/hr* | Emission |
|-----|-----|-------|--------|------------------|----------|
| 470 | 630 | 1,600 | UCD | 79.6 | IMO-T2 |
| 520 | 697 | 1,650 | HD | 88.6 | IMO-T2 |
| 605 | 811 | 1,800 | MD | 103.8 | IMO-T2 |

*Average fuel consumption according to ISO, see page 6.
Specifications / data subject to change without prior notice.

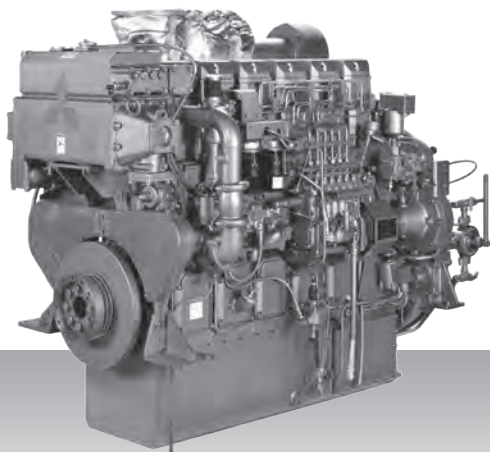
Product dimensions & dry weight

L (mm) : 2,122
W (mm) : 1,202
H (mm) : 1,615
Dry weight (kg) : 2,950

Dimensions and weight are based on standard configuration.

Propulsion - IMO Tier II / CCNR-2 / EU-3A
High speed - Propulsion package

S6R2-T2MPTK



6-cylinder, 4-cycle, water cooled diesel engine, with direct-injection, turbocharger, air-cooler, built-up heat exchanger and sea water pump.

Bore x stroke (mm) : 170 x 220
Displacement (l) : 29.96

Commercial rating

| kW | bhp | rpm | Rating | Fuel cons. l/hr* | Emission |
|-----|-----|-------|--------|------------------|----------|
| 480 | 643 | 1,350 | UCD | 79.9 | IMO-T2 |
| 530 | 711 | 1,400 | HD | 88.7 | IMO-T2 |
| 610 | 818 | 1,500 | MD | 101.5 | IMO-T2 |

*Average fuel consumption according to ISO, see page 6.
Specifications / data subject to change without prior notice.

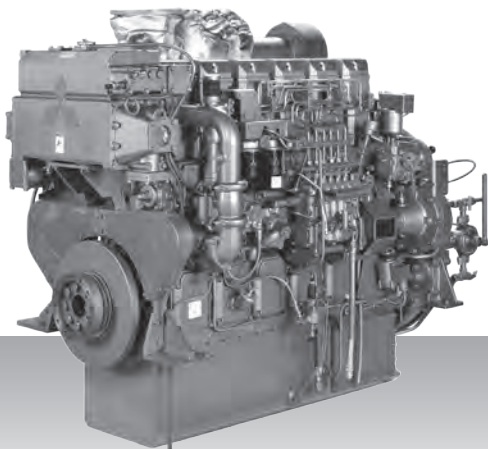
Product dimensions & dry weight

L (mm) : 2,207
W (mm) : 1,156
H (mm) : 1,695
Dry weight (kg) : 3,000

Dimensions and weight are based on standard configuration.

Propulsion - IMO Tier II / CCNR-2 / EU-3A
High speed - Propulsion package

S6R2-T2MPTK3



6-cylinder, 4-cycle, water cooled diesel engine, with direct-injection, turbocharger, air-cooler, built-up heat exchanger and sea water pump.

Bore x stroke (mm) : 170 x 220
Displacement (l) : 29.96

Commercial rating

| kW | bhp | rpm | Rating | Fuel cons. l/hr* | Emission |
|-----|-------|-------|--------|------------------|----------|
| 691 | 927 | 1,406 | HD | 112.7 | IMO-T2 |
| 759 | 1,018 | 1,406 | MD | 122.3 | IMO-T2 |

*Average fuel consumption according to ISO, see page 6.
Specifications / data subject to change without prior notice.

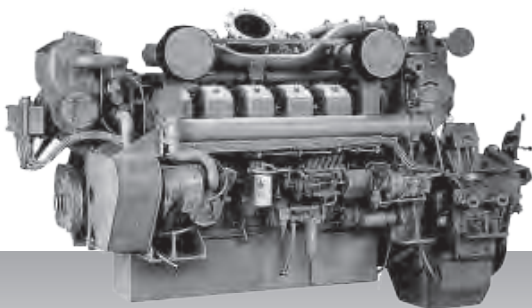
Product dimensions & dry weight

L (mm) : 2,105
W (mm) : 1,183
H (mm) : 1,695
Dry weight (kg) : 3,130

Dimensions and weight are based on standard configuration.

Propulsion - IMO Tier II / CCNR-2 / EU-3A
High speed - Propulsion package

S12A2-T2MPTK



12-cylinder, 4-cycle, water cooled diesel engine,
with direct-injection, turbocharger, air-cooler,
built-up heat exchanger and sea water pump.

Bore x stroke (mm) : 150 x 160
Displacement (l) : 33.93

Commercial rating

| kW | bhp | rpm | Rating | Fuel cons. l/hr* | Emission |
|-----|-------|-------|--------|------------------|----------|
| 701 | 940 | 1,800 | UCD | 121.9 | IMO-T2 |
| 776 | 1,041 | 1,860 | HD | 134.4 | IMO-T2 |
| 858 | 1,151 | 1,920 | MD | 150.1 | IMO-T2 |

*Average fuel consumption according to ISO, see page 6.
Specifications / data subject to change without prior notice.

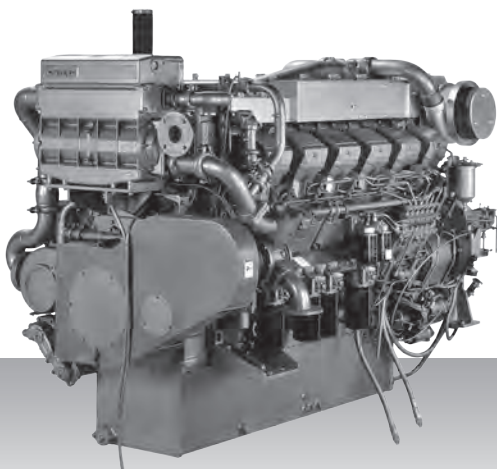
Product dimensions & dry weight

L (mm) : 2,439
W (mm) : 1,482
H (mm) : 1,596
Dry weight (kg) : 3,820

Dimensions and weight are based on standard configuration.

Propulsion - IMO Tier II / CCNR-2 / EU-3A
High speed - Propulsion package

S12R-T2MPTK



12-cylinder, 4-cycle, water cooled diesel engine, with direct-injection, turbocharger, air-cooler, built-up heat exchanger and sea water pump.

Bore x stroke (mm) : 170 x 180

Displacement (l) : 49.03

Commercial rating

| kW | bhp | rpm | Rating | Fuel cons. l/hr* | Emission |
|-------|-------|-------|--------|------------------|----------|
| 940 | 1,261 | 1,600 | UCD | 155.9 | IMO-T2 |
| 1,040 | 1,395 | 1,650 | HD | 173.0 | IMO-T2 |
| 1,210 | 1,623 | 1,800 | MD | 203.6 | IMO-T2 |

*Average fuel consumption according to ISO, see page 6.
Specifications / data subject to change without prior notice.

Product dimensions & dry weight

L (mm) : 2,556

W (mm) : 1,622

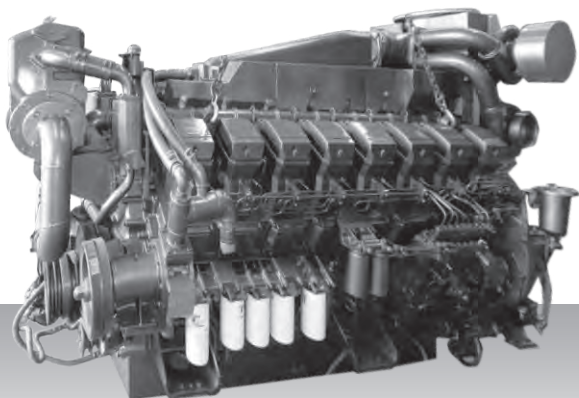
H (mm) : 1,728

Dry weight (kg) : 5,500

Dimensions and weight are based on standard configuration.

Propulsion - IMO Tier II / CCNR-2 / EU-3A
High speed - Propulsion package

S16R-T2MPTK



16-cylinder, 4-cycle, water cooled diesel engine,
with direct-injection, turbocharger, air-cooler,
built-up heat exchanger and sea water pump.

Bore x stroke (mm) : 170 x 180
Displacement (l) : 65.37

Commercial rating

| kW | bhp | rpm | Rating | Fuel cons. l/hr* | Emission |
|-------|-------|-------|--------|------------------|----------|
| 1,250 | 1,676 | 1,600 | UCD | 207.3 | IMO-T2 |
| 1,380 | 1,851 | 1,650 | HD | 229.5 | IMO-T2 |
| 1,610 | 2,159 | 1,800 | MD | 271.7 | IMO-T2 |

*Average fuel consumption according to ISO, see page 6.
Specifications / data subject to change without prior notice.

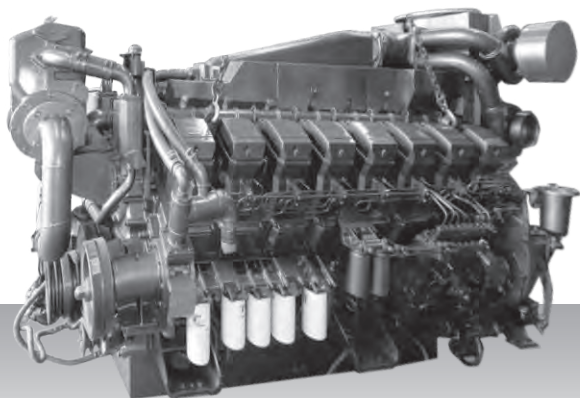
Product dimensions & dry weight

L (mm) : 3,086
W (mm) : 1,622
H (mm) : 1,960
Dry weight (kg) : 7,000

Dimensions and weight are based on standard configuration.

Propulsion - IMO Tier II / CCNR-2 / EU-3A
High speed - Propulsion package

S16R2-T2MPTK



16-cylinder, 4-cycle, water cooled diesel engine, with direct-injection, turbocharger, air-cooler, built-up heat exchanger and sea water pump.

Bore x stroke (mm) : 170 x 220

Displacement (l) : 79.90

Commercial rating

| kW | bhp | rpm | Rating | Fuel cons. l/hr* | Emission |
|-------|-------|-------|--------|------------------|----------|
| 1,450 | 1,944 | 1,350 | UCD | on request | IMO-T2 |
| 1,600 | 2,156 | 1,400 | HD | on request | IMO-T2 |
| 1,885 | 2,528 | 1,500 | MD | on request | IMO-T2 |

*Average fuel consumption according to ISO, see page 6.
Specifications / data subject to change without prior notice.

Product dimensions & dry weight

L (mm) : 3,065

W (mm) : 1,622

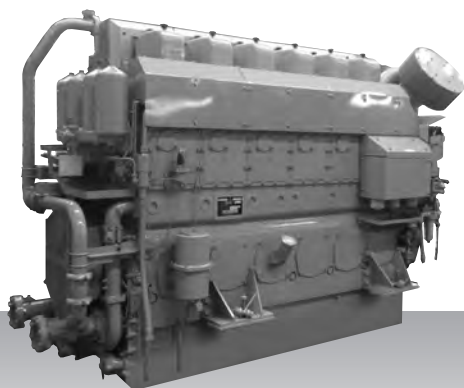
H (mm) : 2,030

Dry weight (kg) : 8,000

Dimensions and weight are based on standard configuration.

Propulsion - IMO Tier II / CCNR-2
Medium speed

S6U-C2MPTK



6-cylinder, 4-cycle, water cooled diesel engine,
with direct-injection, turbocharger and air-cooler.

Bore x stroke (mm) : 240 x 260

Displacement (l) : 70.57

Commercial rating

| kW | bhp | rpm | Rating | Fuel Cons. g/kWh* | Emission |
|-------|-------|-------|--------|-------------------|-----------------|
| 680 | 912 | 1,100 | HD | on request | IMO-T2 |
| 719 | 964 | 1,100 | HD | on request | IMO-T2 |
| 749 | 1,004 | 1,100 | HD | on request | IMO-T2 |
| 1,007 | 1,350 | 1,060 | HD | 200.0 | IMO-T2 / CCNR-2 |
| 1,103 | 1,479 | 1,150 | HD-T | 200.0 | IMO-T2 / CCNR-2 |
| 1,119 | 1,499 | 1,100 | MD | 200.0 | IMO-T2 / CCNR-2 |

*Fuel consumption value at 100% rated power in g/kWh.
Specifications / data subject to change without prior notice.

Product dimensions & dry weight

L (mm) : 3,211

W (mm) : 1,429

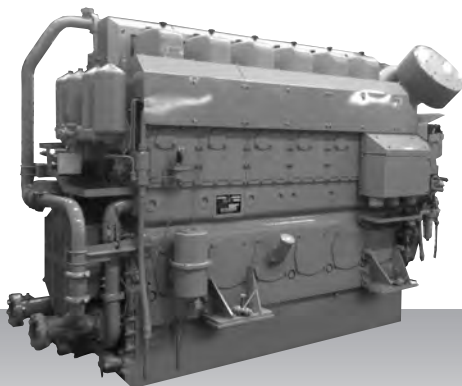
H (mm) : 2,104

Dry weight (kg) : 8,400

Dimensions and weight are based on standard configuration.

Propulsion - IMO Tier II / CCNR-2
Medium speed

S6U2-MPTK



6-cylinder, 4-cycle, water cooled diesel engine,
with direct-injection, turbocharger, air-cooler,

Bore x stroke (mm) : 240 × 300

Displacement (l) : 81.43

Commercial rating

| kW | bhp | rpm | Rating | Fuel Cons. g/kWh* | Emission |
|-------|-------|-----|--------|-------------------|-----------------|
| 1,040 | 1,395 | 930 | HD | 194.0 | IMO-T2 / CCNR-2 |
| 1,156 | 1,550 | 960 | MD | 194.0 | IMO-T2 / CCNR-2 |

*Fuel consumption value at 100% rated power in g/kWh.
Specifications / data subject to change without prior notice.

Product dimensions & dry weight

L (mm) : 3,226

W (mm) : 1,429

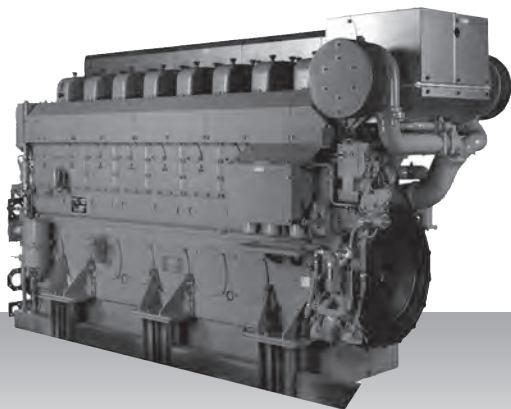
H (mm) : 2,177

Dry weight (kg) : 8,600

Dimensions and weight are based on standard configuration.

Propulsion - IMO Tier II / CCNR-2
Medium speed

S8U-C2MPTK



8-cylinder, 4-cycle, water cooled diesel engine,
with direct-injection, turbocharger, air-cooler,.

Bore x stroke (mm) : 240 x 260

Displacement (l) : 94.10

Commercial rating

| kW | bhp | rpm | Rating | Fuel Cons. g/kWh* | Emission |
|-------|-------|-------|--------|-------------------|-----------------|
| 1,343 | 1,801 | 1,060 | HD | 204.0 | IMO-T2 / CCNR-2 |
| 1,470 | 1,971 | 1,150 | HD-T | 204.0 | IMO-T2 / CCNR-2 |
| 1,492 | 2,001 | 1,100 | MD | 204.0 | IMO-T2 / CCNR-2 |

*Fuel consumption value at 100% rated power in g/kWh.
Specifications / data subject to change without prior notice.

Product dimensions & dry weight

L (mm) : 4,065

W (mm) : 1,539

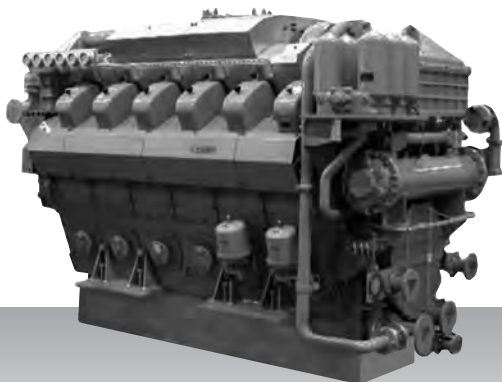
H (mm) : 2,192

Dry weight (kg) : 11,000

Dimensions and weight are based on standard configuration.

Propulsion - IMO Tier II / CCNR-2
Medium speed

S12U-MPTK



12-cylinder, 4-cycle, water cooled diesel engine,
with direct-injection, turbocharger and air-cooler.

Bore x stroke (mm) : 240 x 260

Displacement (l) : 141.15

Commercial rating

| kW | bhp | rpm | Rating | Fuel Cons. g/kWh* | Emission |
|-------|-------|-------|--------|-------------------|----------|
| 2,014 | 2,701 | 1,060 | HD | 200.0 | IMO-T2 |
| 2,205 | 2,957 | 1,150 | HD-T | 200.0 | IMO-T2 |
| 2,238 | 3,001 | 1,100 | MD | 200.0 | IMO-T2 |

*Fuel consumption value at 100% rated power in g/kWh.
Specifications / data subject to change without prior notice.

Product dimensions & dry weight

L (mm) : 3,562

W (mm) : 1,910

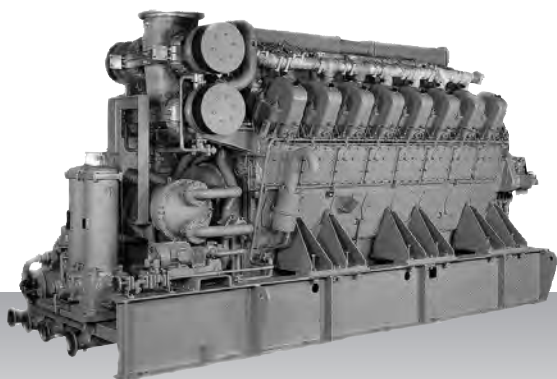
H (mm) : 2,374

Dry weight (kg) : 16,600

Dimensions and weight are based on standard configuration.

Propulsion - IMO Tier II / CCNR-2
Medium speed

S16U-C2MPTK



16-cylinder, 4-cycle, water cooled diesel engine,
with direct-injection, turbocharger and air-cooler.

Bore x stroke (mm) : 240 x 260
Displacement (l) : 188.19

Commercial rating

| kW | bhp | rpm | Rating | Fuel Cons. g/kWh* | Emission |
|-------|-------|-------|--------|-------------------|----------|
| 2,686 | 3,602 | 1,060 | HD | 204.0 | IMO-T2 |
| 2,940 | 3,943 | 1,150 | HD-T | 204.0 | IMO-T2 |
| 2,984 | 4,002 | 1,100 | MD | 204.0 | IMO-T2 |

*Fuel consumption value at 100% rated power in g/kWh.
Specifications / data subject to change without prior notice.

Product dimensions & dry weight

L (mm) : 4,628
W (mm) : 1,710
H (mm) : 2,473
Dry weight (kg) : 20,500

Dimensions and weight are based on standard configuration.

Diesel-electric propulsion specifications



Offshore support vessel - GloMar Wave
Partner - Koedood Dieselservice B.V.

ENGINE MODEL LINE-UP - MARINE DIESEL-ELECTRIC PROPULSION

| Series | 100 kW | 500 kW | 1,000 kW | 2,000 kW | 5,000 kW |
|---------------------|--------|-----------|---------------|---------------|---------------|
| High speed | | | | | |
| S6R2 | | 500 □ 640 | | | |
| S6R | | 545 □ 577 | | | |
| S12A2 | | | 709 □ 752 | | |
| S12R | | | 840 □ 1,154 | | |
| S16R | | | | 1,120 □ 1,536 | |
| S16R2 | | | | | 1,568 □ 1,960 |
| Medium speed | | | | | |
| S6U | | | 1,045 □ 1,343 | | |
| S6U2 | | | 1,161 □ 1,363 | | |
| S8U | | | | 1,394 □ 1,790 | |
| S12U | | | | | 2,090 □ 2,685 |
| S16U | | | | | 2,787 □ 3,580 |

Diesel-electric propulsion products - IMO Tier II - High speed

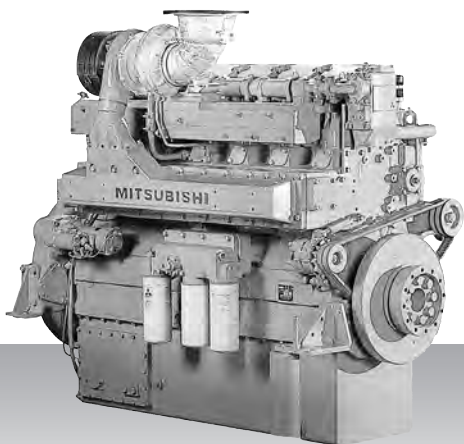
| Engine model | kW | bhp | rpm | Hz | Emission | Page |
|---------------|-------|-------|-------|----|----------|------|
| 50 Hz | | | | | | |
| S6R-MPTAW | 545 | 731 | 1,500 | 50 | IMO-T2 | 54 |
| S6R2-T2MPTK | 640 | 858 | 1,500 | 50 | IMO-T2 | 55 |
| S12A2-MPTAW | 709 | 951 | 1,500 | 50 | IMO-T2 | 56 |
| S12R-MPTAW | 1,120 | 1,502 | 1,500 | 50 | IMO-T2 | 57 |
| S16R-MPTAW | 1,500 | 2,012 | 1,500 | 50 | IMO-T2 | 58 |
| S16R2-T2MPTAW | 1,960 | 2,628 | 1,500 | 50 | IMO-T2 | 59 |
| 60 Hz | | | | | | |
| S6R-MPTAW | 577 | 774 | 1,800 | 60 | IMO-T2 | 54 |
| S6R2-T2MPTK | 500 | 671 | 1,200 | 60 | IMO-T2 | 55 |
| S12A2-MPTAW | 752 | 1,008 | 1,800 | 60 | IMO-T2 | 56 |
| S12R-MPTAW | 840 | 1,126 | 1,200 | 60 | IMO-T2 | 57 |
| S12R-MPTAW | 1,154 | 1,548 | 1,800 | 60 | IMO-T2 | 57 |
| S16R-MPTAW | 1,120 | 1,502 | 1,200 | 60 | IMO-T2 | 58 |
| S16R-MPTAW | 1,536 | 2,060 | 1,800 | 60 | IMO-T2 | 58 |
| S16R2-T2MPTAW | 1,568 | 2,103 | 1,200 | 60 | IMO-T2 | 59 |

Diesel-electric propulsion products - IMO Tier II - Medium speed

| Engine model | kW | bhp | rpm | Hz | Emission | Page |
|--------------|-------|-------|-------|----|----------|------|
| 50 Hz | | | | | | |
| S6U-MPTK | 1,142 | 1,531 | 1,000 | 50 | IMO-T2 | 60 |
| S6U-MPTK | 1,270 | 1,703 | 1,000 | 50 | IMO-T2 | 60 |
| S6U2-MPTK | 1,234 | 1,655 | 1,000 | 50 | IMO-T2 | 61 |
| S6U2-MPTK | 1,363 | 1,828 | 1,000 | 50 | IMO-T2 | 61 |
| S8U-MPTK | 1,522 | 2,041 | 1,000 | 50 | IMO-T2 | 62 |
| S8U-MPTK | 1,693 | 2,270 | 1,000 | 50 | IMO-T2 | 62 |
| S12U-MPTK | 2,283 | 3,062 | 1,000 | 50 | IMO-T2 | 63 |
| S12U-MPTK | 2,541 | 3,408 | 1,000 | 50 | IMO-T2 | 63 |
| S16U-MPTK | 3,045 | 4,083 | 1,000 | 50 | IMO-T2 | 64 |
| S16U-MPTK | 3,388 | 4,543 | 1,000 | 50 | IMO-T2 | 64 |
| 60 Hz | | | | | | |
| S6U-MPTK | 1,045 | 1,401 | 900 | 60 | IMO-T2 | 60 |
| S6U-MPTK | 1,205 | 1,616 | 1,200 | 60 | IMO-T2 | 60 |
| S6U-MPTK | 1,150 | 1,542 | 900 | 60 | IMO-T2 | 60 |
| S6U-MPTK | 1,343 | 1,801 | 1,200 | 60 | IMO-T2 | 60 |
| S6U2-MPTK | 1,161 | 1,557 | 900 | 60 | IMO-T2 | 61 |
| S6U2-MPTK | 1,250 | 1,676 | 900 | 60 | IMO-T2 | 61 |
| S8U-MPTK | 1,394 | 1,869 | 900 | 60 | IMO-T2 | 62 |
| S8U-MPTK | 1,608 | 2,156 | 1,200 | 60 | IMO-T2 | 62 |
| S8U-MPTK | 1,533 | 2,056 | 900 | 60 | IMO-T2 | 62 |
| S8U-MPTK | 1,790 | 2,400 | 1,200 | 60 | IMO-T2 | 62 |
| S12U-MPTK | 2,090 | 2,803 | 900 | 60 | IMO-T2 | 63 |
| S12U-MPTK | 2,412 | 3,235 | 1,200 | 60 | IMO-T2 | 63 |
| S12U-MPTK | 2,299 | 3,083 | 900 | 60 | IMO-T2 | 63 |
| S12U-MPTK | 2,685 | 3,601 | 1,200 | 60 | IMO-T2 | 63 |
| S16U-MPTK | 2,787 | 3,737 | 900 | 60 | IMO-T2 | 64 |
| S16U-MPTK | 3,215 | 4,311 | 1,200 | 60 | IMO-T2 | 64 |
| S16U-MPTK | 3,065 | 4,110 | 900 | 60 | IMO-T2 | 64 |
| S16U-MPTK | 3,580 | 4,801 | 1,200 | 60 | IMO-T2 | 64 |

Diesel-electric propulsion - IMO Tier II
High speed

S6R-MPTAW



6-cylinder, 4-cycle, water cooled diesel engine,
with direct-injection, turbocharger and air-cooler.

Bore x stroke (mm) : 170 x 180

Displacement (l) : 24.51

Commercial rating

| kW | bhp | rpm | Hz | Fuel cons. l/hr* | Emission |
|-----|-----|-------|----|------------------|----------|
| 545 | 731 | 1,500 | 50 | 65.1 | IMO-T2 |
| 577 | 774 | 1,800 | 60 | on request | IMO-T2 |

*Average fuel consumption according to ISO, see page 6.
Specifications / data subject to change without prior notice.

Product dimensions & dry weight

L (mm) : 1,786

W (mm) : 1,220

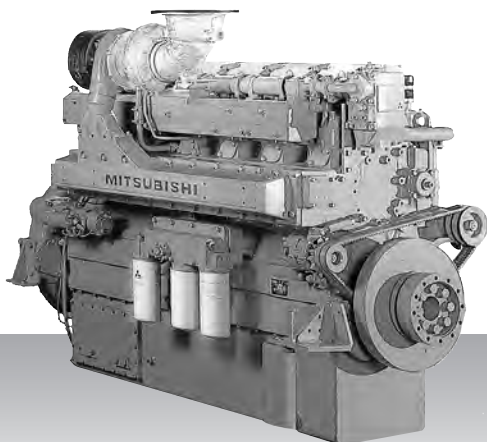
H (mm) : 1,650

Dry weight (kg) : 2,913

Dimensions and weight are based on standard configuration.

Diesel-electric propulsion - IMO Tier II
High speed

S6R2-T2MPTK



6-cylinder, 4-cycle, water cooled diesel engine,
with direct-injection, turbocharger and air-cooler.

Bore x stroke (mm) : 170 x 220

Displacement (l) : 29.96

Commercial rating

| kW | bhp | rpm | Hz | Fuel cons. l/hr* | Emission |
|-----|-----|-------|----|------------------|----------|
| 500 | 671 | 1,200 | 60 | 58.6 | IMO-T2 |
| 640 | 858 | 1,500 | 50 | 78.4 | IMO-T2 |

*Average fuel consumption according to ISO, see page 6.
Specifications / data subject to change without prior notice.

Product dimensions & dry weight

L (mm) : 1,811

W (mm) : 1,108

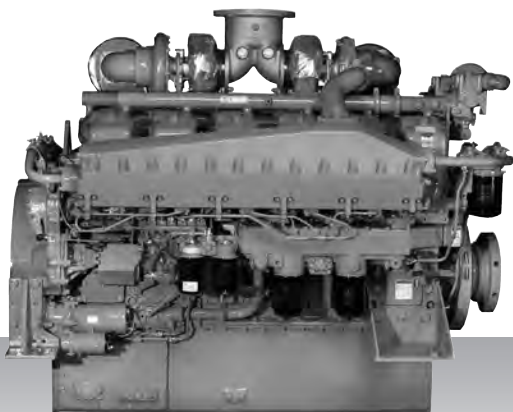
H (mm) : 1,694

Dry weight (kg) : 2,960

Dimensions and weight are based on standard configuration.

Diesel-electric propulsion - IMO Tier II
High speed

S12A2-MPTAW



12-cylinder, 4-cycle, water cooled diesel engine,
with direct-injection, turbocharger and air-cooler.

Bore x stroke (mm) : 150 x 160

Displacement (l) : 33.93

Commercial rating

| kW | bhp | rpm | Hz | Fuel cons. l/hr* | Emission |
|-----|-------|-------|----|------------------|----------|
| 709 | 951 | 1,500 | 50 | 85.0 | IMO-T2 |
| 752 | 1,008 | 1,800 | 60 | on request | IMO-T2 |

*Average fuel consumption according to ISO, see page 6.
Specifications / data subject to change without prior notice.

Product dimensions & dry weight

L (mm) : 2,059

W (mm) : 1,654

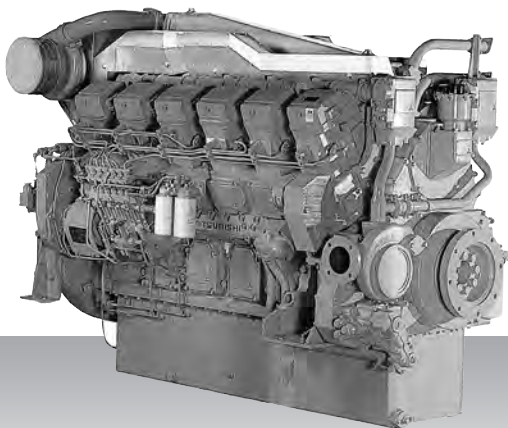
H (mm) : 1,596

Dry weight (kg) : 3,840

Dimensions and weight are based on standard configuration.

Diesel-electric propulsion - IMO Tier II
High speed

S12R-MPTAW



12-cylinder, 4-cycle, water cooled diesel engine,
with direct-injection, turbocharger and air-cooler.

Bore x stroke (mm) : 170 x 180

Displacement (l) : 49.03

Commercial rating

| kW | bhp | rpm | Hz | Fuel cons. l/hr* | Emission |
|-------|-------|-------|----|------------------|----------|
| 840 | 1,126 | 1,200 | 60 | on request | IMO-T2 |
| 1,120 | 1,502 | 1,500 | 50 | on request | IMO-T2 |
| 1,154 | 1,548 | 1,800 | 60 | on request | IMO-T2 |

*Average fuel consumption according to ISO, see page 6.
Specifications / data subject to change without prior notice.

Product dimensions & dry weight

L (mm) : 2,416

W (mm) : 1,585

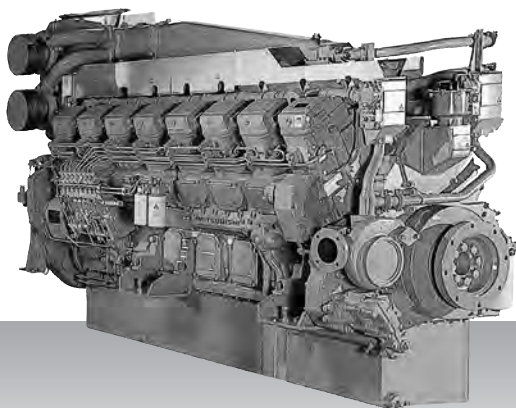
H (mm) : 1,807

Dry weight (kg) : 5,470

Dimensions and weight are based on standard configuration.

Diesel-electric propulsion - IMO Tier II
High speed

S16R-MPTAW



16-cylinder, 4-cycle, water cooled diesel engine,
with direct-injection, turbocharger and air-cooler.

Bore x stroke (mm) : 170 x 180

Displacement (l) : 65.37

Commercial rating

| kW | bhp | rpm | Hz | Fuel cons. l/hr* | Emission |
|-------|-------|-------|----|------------------|----------|
| 1,120 | 1,502 | 1,200 | 60 | on request | IMO-T2 |
| 1,500 | 2,012 | 1,500 | 50 | on request | IMO-T2 |
| 1,536 | 2,060 | 1,800 | 60 | on request | IMO-T2 |

*Average fuel consumption according to ISO, see page 6.
Specifications / data subject to change without prior notice.

Product dimensions & dry weight

L (mm) : 2,971

W (mm) : 1,585

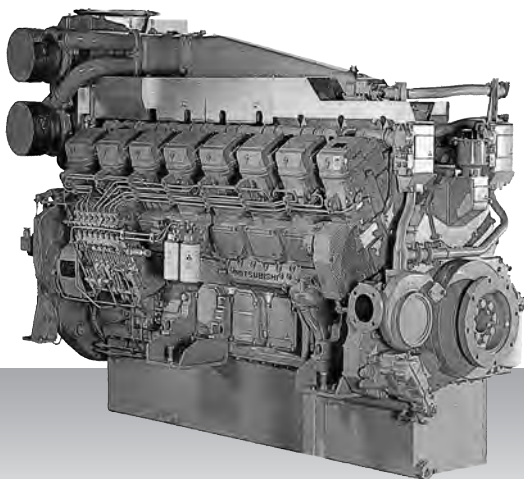
H (mm) : 1,960

Dry weight (kg) : 6,950

Dimensions and weight are based on standard configuration.

Diesel-electric propulsion - IMO - Tier II
High speed

S16R2-T2MPTAW



16-cylinder, 4-cycle, water cooled diesel engine,
with direct-injection, turbocharger and air-cooler.

Bore x stroke (mm) : 170 x 220

Displacement (l) : 79.90

Commercial rating

| kW | bhp | rpm | Hz | Fuel cons. l/hr* | Emission |
|-------|-------|-------|----|------------------|----------|
| 1,568 | 2,103 | 1,200 | 60 | 284.5 | IMO-T2 |
| 1,960 | 2,628 | 1,500 | 50 | 360.6 | IMO-T2 |

*Average fuel consumption according to ISO, see page 6.
Specifications / data subject to change without prior notice.

Product dimensions & dry weight

L (mm) : 2,946

W (mm) : 1,525

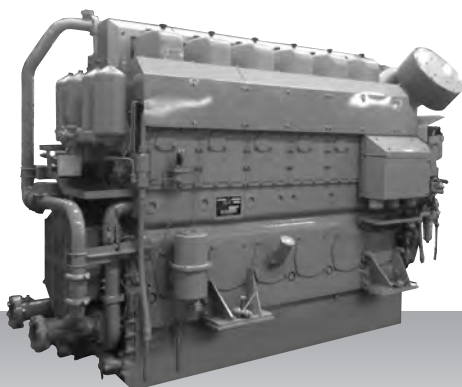
H (mm) : 2,030

Dry weight (kg) : 7,750

Dimensions and weight are based on standard configuration.

Diesel-electric propulsion - IMO Tier II
Medium speed

S6U-MPTK



6-cylinder, 4-cycle, water cooled diesel engine,
with direct-injection, turbocharger and air-cooler.

Bore x stroke (mm) : 240 x 260

Displacement (l) : 70.57

Commercial rating

| Operation | kW | bhp | rpm | Hz | Fuel cons. g/kWh* | Emission |
|--------------|-------|-------|-------|----|-------------------|----------|
| Continuous | 1,045 | 1,401 | 900 | 60 | on request | IMO-T2 |
| | 1,142 | 1,531 | 1,000 | 50 | on request | IMO-T2 |
| | 1,205 | 1,616 | 1,200 | 60 | on request | IMO-T2 |
| Intermittent | 1,150 | 1,542 | 900 | 60 | on request | IMO-T2 |
| | 1,270 | 1,703 | 1,000 | 50 | on request | IMO-T2 |
| | 1,343 | 1,801 | 1,200 | 60 | on request | IMO-T2 |

*Fuel consumption value at 100% rated power in g/kWh.
Specifications / data subject to change without prior notice.

Product dimensions & dry weight

L (mm) : 3,211

W (mm) : 1,429

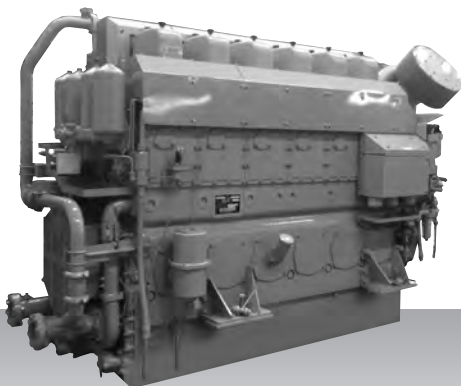
H (mm) : 2,104

Dry weight (kg) : 8,400

Dimensions and weight are based on standard configuration.

Diesel-electric propulsion - IMO Tier II
Medium speed

S6U2-MPTK



6-cylinder, 4-cycle, water cooled diesel engine,
with direct-injection, turbocharger and air-cooler.

Bore x stroke (mm) : 240 x 300

Displacement (l) : 81.43

Commercial rating

| Operation | kW | bhp | rpm | Hz | Fuel cons. g/kWh* | Emission |
|--------------|-------|-------|-------|----|-------------------|----------|
| Continuous | 1,161 | 1,557 | 900 | 60 | on request | IMO-T2 |
| | 1,234 | 1,655 | 1,000 | 50 | on request | IMO-T2 |
| Intermittent | 1,250 | 1,676 | 900 | 60 | on request | IMO-T2 |
| | 1,363 | 1,828 | 1,000 | 50 | on request | IMO-T2 |

*Fuel consumption value at 100% rated power in g/kWh.
Specifications / data subject to change without prior notice.

Product dimensions & dry weight

L (mm) : 3,226

W (mm) : 1,429

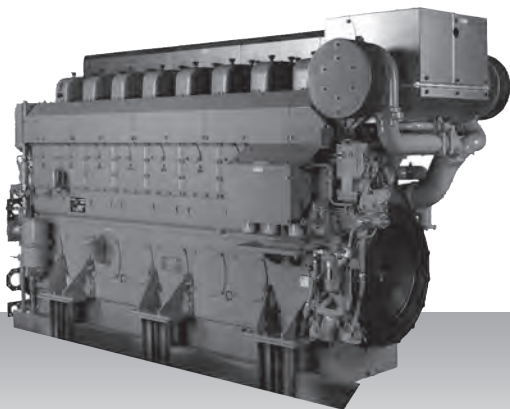
H (mm) : 2,177

Dry weight (kg) : 8,600

Dimensions and weight are based on standard configuration.

Diesel-electric propulsion - IMO Tier II
Medium speed

S8U-MPTK



8-cylinder, 4-cycle, water cooled diesel engine,
with direct-injection, turbocharger, air-cooler,.

Bore x stroke (mm) : 240 x 260

Displacement (l) : 94.10

Commercial rating

| Operation | kW | bhp | rpm | Hz | Fuel cons. g/kWh* | Emission |
|--------------|-------|-------|-------|----|-------------------|----------|
| Continuous | 1,394 | 1,869 | 900 | 60 | on request | IMO-T2 |
| | 1,522 | 2,041 | 1,000 | 50 | on request | IMO-T2 |
| | 1,608 | 2,156 | 1,200 | 60 | on request | IMO-T2 |
| Intermittent | 1,533 | 2,056 | 900 | 60 | on request | IMO-T2 |
| | 1,693 | 2,270 | 1,000 | 50 | on request | IMO-T2 |
| | 1,790 | 2,400 | 1,200 | 60 | on request | IMO-T2 |

*Fuel consumption value at 100% rated power in g/kWh.
Specifications / data subject to change without prior notice.

Product dimensions & dry weight

L (mm) : 4,065

W (mm) : 1,539

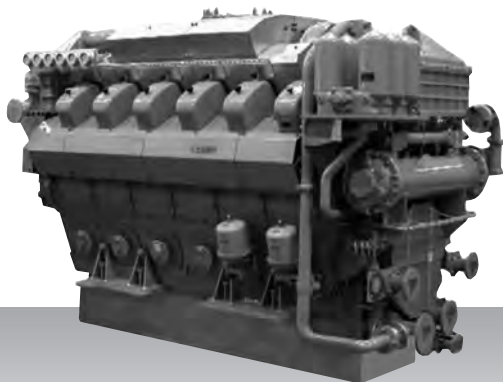
H (mm) : 2,192

Dry weight (kg) : 11,000

Dimensions and weight are based on standard configuration.

Diesel-electric propulsion - IMO Tier II
Medium speed

S12U-MPTK



12-cylinder, 4-cycle, water cooled diesel engine, with direct-injection, turbocharger and air-cooler.

Bore x stroke (mm) : 240 x 260

Displacement (l) : 141.15

Commercial rating

| Operation | kW | bhp | rpm | Hz | Fuel cons. g/kWh* | Emission |
|--------------|-------|-------|-------|----|-------------------|----------|
| Continuous | 2,090 | 2,803 | 900 | 60 | on request | IMO-T2 |
| | 2,283 | 3,062 | 1,000 | 50 | on request | IMO-T2 |
| | 2,412 | 3,235 | 1,200 | 60 | on request | IMO-T2 |
| Intermittent | 2,299 | 3,083 | 900 | 60 | on request | IMO-T2 |
| | 2,541 | 3,408 | 1,000 | 50 | on request | IMO-T2 |
| | 2,685 | 3,601 | 1,200 | 60 | on request | IMO-T2 |

*Fuel consumption value at 100% rated power in g/kWh.
Specifications / data subject to change without prior notice.

Product dimensions & dry weight

L (mm) : 3,562

W (mm) : 1,910

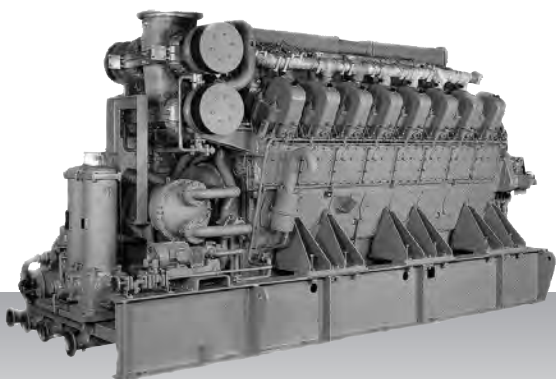
H (mm) : 2,374

Dry weight (kg) : 16,600

Dimensions and weight are based on standard configuration.

Diesel-electric propulsion - IMO Tier II
Medium speed

S16U-MPTK



16-cylinder, 4-cycle, water cooled diesel engine,
with direct-injection, turbocharger and air-cooler.

Bore x stroke (mm) : 240 x 260

Displacement (l) : 188.19

Commercial rating

| Operation | kW | bhp | rpm | Hz | Fuel cons. g/kWh* | Emission |
|--------------|-------|-------|-------|----|-------------------|----------|
| Continuous | 2,787 | 3,737 | 900 | 60 | on request | IMO-T2 |
| | 3,045 | 4,083 | 1,000 | 50 | on request | IMO-T2 |
| | 3,215 | 4,311 | 1,200 | 60 | on request | IMO-T2 |
| Intermittent | 3,065 | 4,110 | 900 | 60 | on request | IMO-T2 |
| | 3,388 | 4,543 | 1,000 | 50 | on request | IMO-T2 |
| | 3,580 | 4,801 | 1,200 | 60 | on request | IMO-T2 |

*Fuel consumption value at 100% rated power in g/kWh.
Specifications / data subject to change without prior notice.

Product dimensions & dry weight

L (mm) : 4,628

W (mm) : 1,710

H (mm) : 2,473

Dry weight (kg) : 20,500

Dimensions and weight are based on standard configuration.

Auxiliary generator specifications



Fishing vessel - Skagøysund

Partner - Mitsubishi Turbocharger and Engine Europe B.V.
Norwegian Branch Office, Marine and Power Solutions

ENGINE MODEL LINE-UP - MARINE AUXILIARY GENERATOR

| Series | 100 kW | 500 kW | 1,000 kW | 2,000 kW | 5,000 kW |
|---------------------|-----------|-----------|-------------|---------------|---------------|
| High speed | | | | | |
| 6D16 | 106 □ 129 | | | | |
| 6D24 | 181 □ 218 | | | | |
| S6A3 | | 400 □ 635 | | | |
| S6B3 | | 335 □ 375 | | | |
| S6R2 | | 485 □ 640 | | | |
| S6R | | 515 □ 635 | | | |
| S12R | | | 840 □ 1,270 | | |
| S12A2 | | | 679 □ 828 | | |
| S16R | | | | 1,120 □ 1,690 | |
| S16R2 | | | | 1,568 □ 1,960 | |
| Medium speed | | | | | |
| S6U | | | | 1,150 □ 1,343 | |
| S6U2 | | | | 1,250 □ 1,363 | |
| S8U | | | | 1,533 □ 1,790 | |
| S12U | | | | | 2,299 □ 2,685 |
| S16U | | | | | 3,065 □ 3,580 |

Auxiliary generator products - IMO Tier I / non emission - High speed

| Engine model | kW | bhp | rpm | Hz | Emission | Page |
|--------------|-------|-------|-------|----|---------------|------|
| 50 Hz | | | | | | |
| 6D16-T | 106 | 142 | 1,500 | 50 | not regulated | 68 |
| 6D24-T | 169 | 227 | 1,500 | 50 | non emission | 69 |
| 6D24-TC | 181 | 243 | 1,500 | 50 | IMO-T1 | 69 |
| S6B3-MPTA | 335 | 449 | 1,500 | 50 | IMO-T1 | 70 |
| S6A3-MPTA | 400 | 536 | 1,500 | 50 | IMO-T1 | 71 |
| S6R-MPTA | 515 | 691 | 1,500 | 50 | IMO-T1 | 72 |
| S6R2-MPTA | 595 | 798 | 1,500 | 50 | IMO-T1 | 73 |
| S12A2-MPTA | 679 | 911 | 1,500 | 50 | IMO-T1 | 74 |
| S12R-MPTA | 1,110 | 1,489 | 1,500 | 50 | IMO-T1 | 75 |
| S16R-MPTA | 1,480 | 1,985 | 1,500 | 50 | IMO-T1 | 76 |
| 60 Hz | | | | | | |
| 6D16-T | 129 | 173 | 1,800 | 60 | not regulated | 68 |
| 6D24-T | 195 | 262 | 1,800 | 60 | non emission | 69 |
| 6D24-TC | 218 | 292 | 1,800 | 60 | IMO-T1 | 69 |
| S6B3-MPTA | 375 | 503 | 1,800 | 60 | IMO-T1 | 70 |
| S6A3-MPTA | 460 | 617 | 1,800 | 60 | IMO-T1 | 71 |
| S6R-MPTA | 595 | 798 | 1,800 | 60 | IMO-T1 | 72 |
| S6R2-MPTA | 485 | 650 | 1,200 | 60 | IMO-T1 | 73 |
| S12A2-MPTA | 761 | 1,021 | 1,800 | 60 | IMO-T1 | 74 |
| S12R-MPTA | 1,190 | 1,596 | 1,800 | 60 | IMO-T1 | 75 |
| S16R-MPTA | 1,590 | 2,132 | 1,800 | 60 | IMO-T1 | 76 |

Auxiliary generator products - IMO Tier II / CCNR-2 / EU-3A - High speed

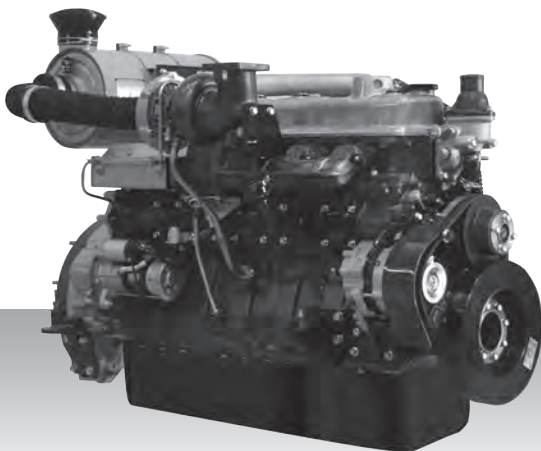
| Engine model | kW | bhp | rpm | Hz | Emission | Page |
|---------------|-------|-------|-------|----|--------------------------|------|
| 50 Hz | | | | | | |
| 6D16-T | 106 | 142 | 1,500 | 50 | not regulated for IMO-T2 | 77 |
| 6D24-TC | 181 | 243 | 1,500 | 50 | IMO-T2 | 78 |
| S6B3-T2MPTAW | 335 | 449 | 1,500 | 50 | IMO-T2 | 79 |
| S6R-(Z3)MPTAW | 545 | 731 | 1,500 | 50 | IMO-T2 | 80 |
| S6R2-T2MPTK | 640 | 858 | 1,500 | 50 | IMO-T2 | 81 |
| S12A2-MPTAW | 709 | 951 | 1,500 | 50 | IMO-T2 | 82 |
| S12R-MPTAW | 1,120 | 1,502 | 1,500 | 50 | IMO-T2 | 83 |
| S16R-MPTAW | 1,500 | 2,012 | 1,500 | 50 | IMO-T2 | 84 |
| S16R2-T2MPTAW | 1,960 | 2,628 | 1,500 | 50 | IMO-T2 | 85 |
| 60 Hz | | | | | | |
| 6D16-T | 129 | 173 | 1,800 | 60 | not regulated for IMO-T2 | 77 |
| 6D24-TC | 218 | 292 | 1,800 | 60 | IMO-T2 | 78 |
| S6B3-T2MPTAW | 375 | 503 | 1,800 | 60 | IMO-T2 | 79 |
| S6R-(Z3)MPTAW | 635 | 852 | 1,800 | 60 | IMO-T2 / EU-3A | 80 |
| S6R2-T2MPTK | 500 | 671 | 1,200 | 60 | IMO-T2 | 81 |
| S12A2-MPTAW | 828 | 1,110 | 1,800 | 60 | IMO-T2 | 82 |
| S12R-MPTAW | 840 | 1,126 | 1,200 | 60 | IMO-T2 | 83 |
| S12R-MPTAW | 1,270 | 1,703 | 1,800 | 60 | IMO-T2 | 83 |
| S16R-MPTAW | 1,120 | 1,502 | 1,200 | 60 | IMO-T2 | 84 |
| S16R-MPTAW | 1,690 | 2,266 | 1,800 | 60 | IMO-T2 | 84 |
| S16R2-T2MPTAW | 1,568 | 2,103 | 1,200 | 60 | IMO-T2 | 85 |

Auxiliary generator products - IMO Tier II - Medium speed

| Engine model | kW | bhp | rpm | Hz | Emission | Page |
|--------------|-------|-------|-------|----|----------|------|
| 50 Hz | | | | | | |
| S6U-MPTK | 1,270 | 1,703 | 1,000 | 50 | IMO-T2 | 86 |
| S6U2-MPTK | 1,363 | 1,828 | 1,000 | 50 | IMO-T2 | 87 |
| S8U-MPTK | 1,693 | 2,270 | 1,000 | 50 | IMO-T2 | 88 |
| S12U-MPTK | 2,541 | 3,408 | 1,000 | 50 | IMO-T2 | 89 |
| S16U-MPTK | 3,388 | 4,543 | 1,000 | 50 | IMO-T2 | 90 |
| 60 Hz | | | | | | |
| S6U-MPTK | 1,150 | 1,542 | 900 | 60 | IMO-T2 | 86 |
| S6U-MPTK | 1,343 | 1,801 | 1,200 | 60 | IMO-T2 | 86 |
| S6U2-MPTK | 1,250 | 1,676 | 900 | 60 | IMO-T2 | 87 |
| S8U-MPTK | 1,533 | 2,056 | 900 | 60 | IMO-T2 | 88 |
| S8U-MPTK | 1,790 | 2,400 | 1,200 | 60 | IMO-T2 | 88 |
| S12U-MPTK | 2,299 | 3,083 | 900 | 60 | IMO-T2 | 89 |
| S12U-MPTK | 2,685 | 3,601 | 1,200 | 60 | IMO-T2 | 89 |
| S16U-MPTK | 3,065 | 4,110 | 900 | 60 | IMO-T2 | 90 |
| S16U-MPTK | 3,580 | 4,801 | 1,200 | 60 | IMO-T2 | 90 |

Auxiliary generator -
IMO Tier I / non emission - High speed

6D16-T



6-cylinder, 4-cycle, water cooled diesel engine,
with direct-injection, turbocharger and air-cooler.

Bore x stroke (mm) : 118 x 115
Displacement (l) : 7.54

Commercial rating

| kW | bhp | rpm | Hz | Fuel cons. l/hr* | Emission |
|-----|-----|-------|----|------------------|---------------|
| 106 | 142 | 1,500 | 50 | 17.9 | not regulated |
| 129 | 173 | 1,800 | 60 | on request | not regulated |

*Average fuel consumption according to ISO, see page 6.
Specifications / data subject to change without prior notice.

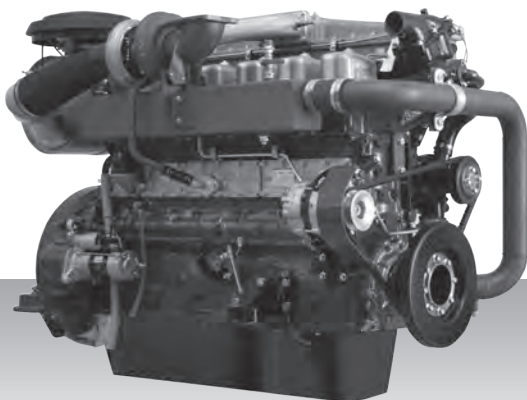
Product dimensions & dry weight

L (mm) : 1,335
W (mm) : 731
H (mm) : 830
Dry weight (kg) : 575

Dimensions and weight are based on standard configuration.

Auxiliary generator -
IMO Tier I / non emission - High speed

6D24-T(C)



6-cylinder, 4-cycle, water cooled diesel engine,
with direct-injection, turbocharger and air-cooler.

Bore x stroke (mm) : 130 x 150

Displacement (l) : 11.95

Commercial rating

| kW | bhp | rpm | Hz | Fuel cons. l/hr* | Emission |
|-----|-----|-------|----|------------------|--------------|
| 169 | 227 | 1,500 | 50 | on request | non emission |
| 181 | 243 | 1,500 | 50 | 25.5 | IMO-T1 |
| 195 | 262 | 1,800 | 60 | on request | non emission |
| 218 | 292 | 1,800 | 60 | 30.9 | IMO-T1 |

*Average fuel consumption according to ISO, see page 6.
Specifications / data subject to change without prior notice.

Product dimensions & dry weight

L (mm) : 1,535

W (mm) : 880

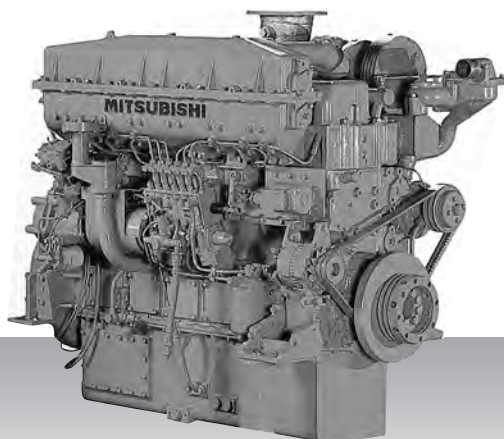
H (mm) : 1,235

Dry weight (kg) : 1,209

Dimensions and weight are based on standard configuration.

Auxiliary generator -
IMO Tier I / non emission - High speed

S6B3-MPTA



6-cylinder, 4-cycle, water cooled diesel engine,
with direct-injection, turbocharger and air-cooler.

Bore x stroke (mm) : 135 x 170

Displacement (l) : 14.60

Commercial rating

| kW | bhp | rpm | Hz | Fuel cons. l/hr* | Emission |
|-----|-----|-------|----|------------------|----------|
| 335 | 449 | 1,500 | 50 | on request | IMO-T1 |
| 375 | 503 | 1,800 | 60 | on request | IMO-T1 |

*Average fuel consumption according to ISO, see page 6.
Specifications / data subject to change without prior notice.

Product dimensions & dry weight

L (mm) : 1,834

W (mm) : 873

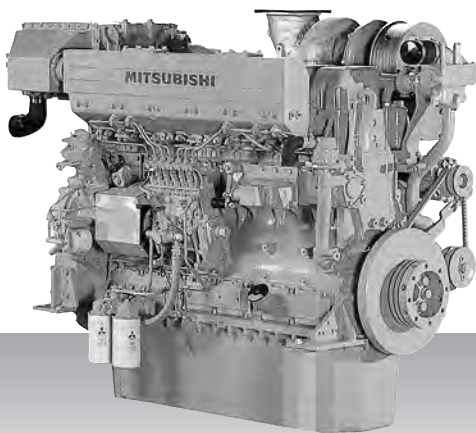
H (mm) : 1,331

Dry weight (kg) : 1,300

Dimensions and weight are based on standard configuration.

Auxiliary generator -
IMO Tier I / non emission - High speed

S6A3-MPTA



6-cylinder, 4-cycle, water cooled diesel engine,
with direct-injection, turbocharger and air-cooler.

Bore x stroke (mm) : 150 x 175

Displacement (l) : 18.56

Commercial rating

| kW | bhp | rpm | Hz | Fuel cons. l/hr* | Emission |
|-----|-----|-------|----|------------------|----------|
| 400 | 536 | 1,500 | 50 | 49.4 | IMO-T1 |
| 460 | 617 | 1,800 | 60 | 57.8 | IMO-T1 |

*Average fuel consumption according to ISO, see page 6.
Specifications / data subject to change without prior notice.

Product dimensions & dry weight

L (mm) : 1,636

W (mm) : 924

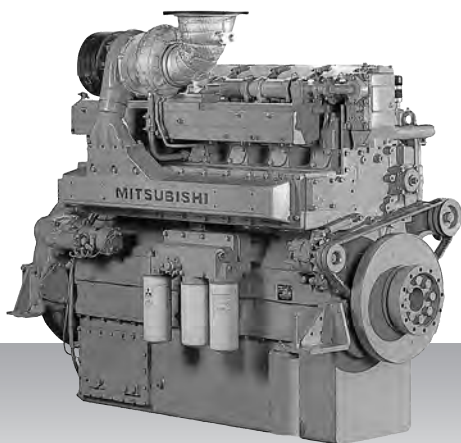
H (mm) : 1,421

Dry weight (kg) : 1,850

Dimensions and weight are based on standard configuration.

Auxiliary generator -
IMO Tier I / non emission - High speed

S6R-MPTA



6-cylinder, 4-cycle, water cooled diesel engine,
with direct-injection, turbocharger and air-cooler.

Bore x stroke (mm) : 170 x 180
Displacement (l) : 24.51

Commercial rating

| kW | bhp | rpm | Hz | Fuel cons. l/hr* | Emission |
|-----|-----|-------|----|------------------|----------|
| 515 | 691 | 1,500 | 50 | 64.4 | IMO-T1 |
| 595 | 798 | 1,800 | 60 | 77.9 | IMO-T1 |

*Average fuel consumption according to ISO, see page 6.
Specifications / data subject to change without prior notice.

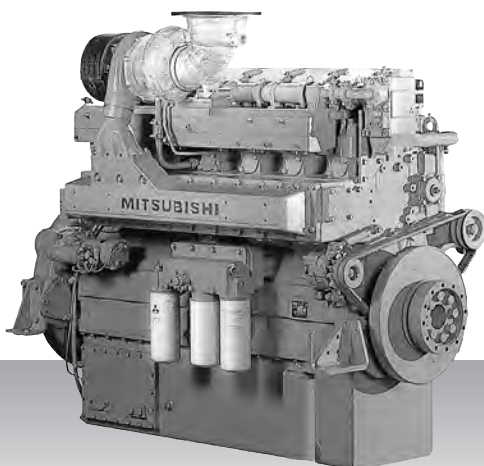
Product dimensions & dry weight

L (mm) : 1,811
W (mm) : 1,108
H (mm) : 1,614
Dry weight (kg) : 2,780

Dimensions and weight are based on standard configuration.

Auxiliary generator -
IMO Tier I / non emission - High speed

S6R2-MPTA



6-cylinder, 4-cycle, water cooled diesel engine,
with direct-injection, turbocharger and air-cooler.

Bore x stroke (mm) : 170 x 220

Displacement (l) : 29.96

Commercial rating

| kW | bhp | rpm | Hz | Fuel cons. l/hr* | Emission |
|-----|-----|-------|----|------------------|----------|
| 485 | 650 | 1,200 | 60 | 57.9 | IMO-T1 |
| 595 | 798 | 1,500 | 50 | 77.9 | IMO-T1 |

*Average fuel consumption according to ISO, see page 6.
Specifications / data subject to change without prior notice.

Product dimensions & dry weight

L (mm) : 1,811

W (mm) : 1,108

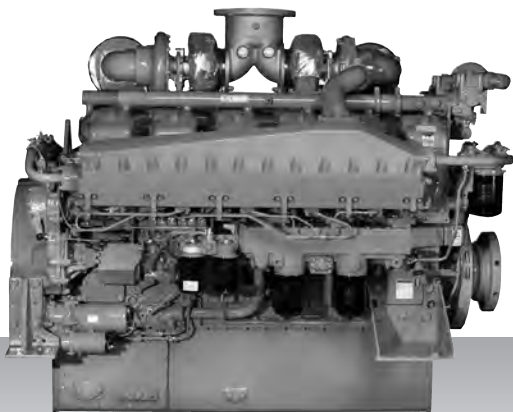
H (mm) : 1,694

Dry weight (kg) : 2,910

Dimensions and weight are based on standard configuration.

Auxiliary generator -
IMO Tier I / non emission - High speed

S12A2-MPTA



12-cylinder, 4-cycle, water cooled diesel engine,
with direct-injection, turbocharger and air-cooler.

Bore x stroke (mm) : 150 x 160

Displacement (l) : 33.93

Commercial rating

| kW | bhp | rpm | Hz | Fuel cons. l/hr* | Emission |
|-----|-------|-------|----|------------------|----------|
| 761 | 1,021 | 1,800 | 60 | 97.5 | IMO-T1 |
| 679 | 911 | 1,500 | 50 | 83.0 | IMO-T1 |

*Average fuel consumption according to ISO, see page 6.
Specifications / data subject to change without prior notice.

Product dimensions & dry weight

L (mm) : 2,002

W (mm) : 1,442

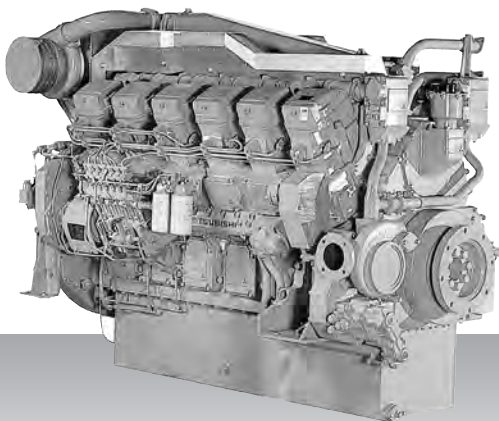
H (mm) : 1,596

Dry weight (kg) : 3,380

Dimensions and weight are based on standard configuration.

Auxiliary generator -
IMO Tier I / non emission - High speed

S12R-MPTA



12-cylinder, 4-cycle, water cooled diesel engine,
with direct-injection, turbocharger and air-cooler.

Bore x stroke (mm) : 170 x 180

Displacement (l) : 49.03

Commercial rating

| kW | bhp | rpm | Hz | Fuel cons. l/hr* | Emission |
|-------|-------|-------|----|------------------|----------|
| 1,110 | 1,489 | 1,500 | 50 | 136.6 | IMO-T1 |
| 1,190 | 1,596 | 1,800 | 60 | 155.2 | IMO-T1 |

*Average fuel consumption according to ISO, see page 6.
Specifications / data subject to change without prior notice.

Product dimensions & dry weight

L (mm) : 2,376

W (mm) : 1,512

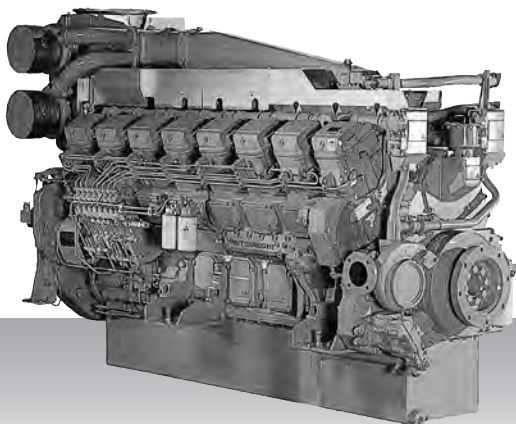
H (mm) : 1,742

Dry weight (kg) : 5,230

Dimensions and weight are based on standard configuration.

Auxiliary generator -
IMO Tier I / non emission - High speed

S16R-MPTA



16-cylinder, 4-cycle, water cooled diesel engine,
with direct-injection, turbocharger, air-cooler,.

Bore x stroke (mm) : 170 x 180

Displacement (l) : 65.37

Commercial rating

| kW | bhp | rpm | Hz | Fuel cons. l/hr* | Emission |
|-------|-------|-------|----|------------------|----------|
| 1,480 | 1,985 | 1,500 | 50 | 177.9 | IMO-T1 |
| 1,590 | 2,132 | 1,800 | 60 | 200.9 | IMO-T1 |

*Average fuel consumption according to ISO, see page 6.
Specifications / data subject to change without prior notice.

Product dimensions & dry weight

L (mm) : 2,931

W (mm) : 1,512

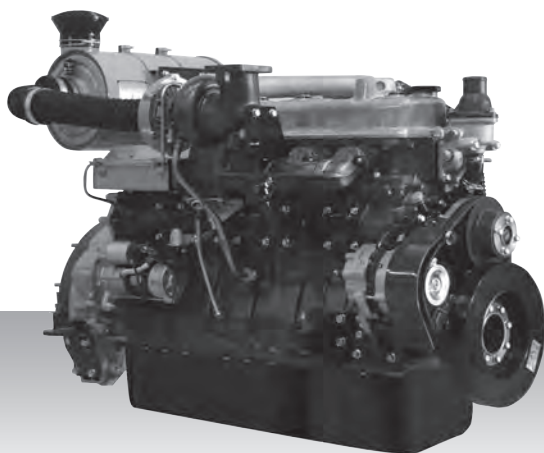
H (mm) : 1,960

Dry weight (kg) : 6,660

Dimensions and weight are based on standard configuration.

Auxiliary generator -
IMO Tier II / CCNR-2 / EU-3A - High speed

6D16-T



6-cylinder, 4-cycle, water cooled diesel engine,
with direct-injection, turbocharger and air-cooler.

Bore x stroke (mm) : 118 x 115

Displacement (l) : 7.54

Commercial rating

| kW | bhp | rpm | Hz | Fuel cons. l/hr* | Emission |
|-----|-----|-------|----|------------------|-----------------------------|
| 106 | 142 | 1,500 | 50 | 17.9 | not regulated for IMO-T2 |
| 129 | 173 | 1,800 | 60 | on request | not regulated for IMO-T2 |

*Average fuel consumption according to ISO, see page 6.
Specifications / data subject to change without prior notice.

Product dimensions & dry weight

L (mm) : 1,335

W (mm) : 731

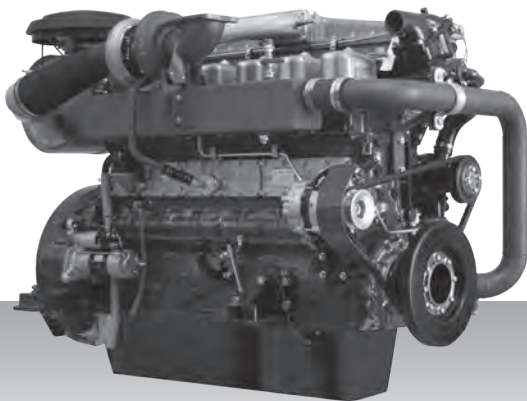
H (mm) : 830

Dry weight (kg) : 575

Dimensions and weight are based on standard configuration.

Auxiliary generator -
IMO Tier II / CCNR-2 / EU-3A - High speed

6D24-TC



6-cylinder, 4-cycle, water cooled diesel engine,
with direct-injection, turbocharger and air-cooler.

Bore x stroke (mm) : 130 x 150

Displacement (l) : 11.95

Commercial rating

| kW | bhp | rpm | Hz | Fuel cons. l/hr* | Emission |
|-----|-----|-------|----|------------------|----------|
| 181 | 243 | 1,500 | 50 | 25.5 | IMO-T2 |
| 218 | 292 | 1,800 | 60 | 30.9 | IMO-T2 |

*Average fuel consumption according to ISO, see page 6.
Specifications / data subject to change without prior notice.

Product dimensions & dry weight

L (mm) : 1,535

W (mm) : 880

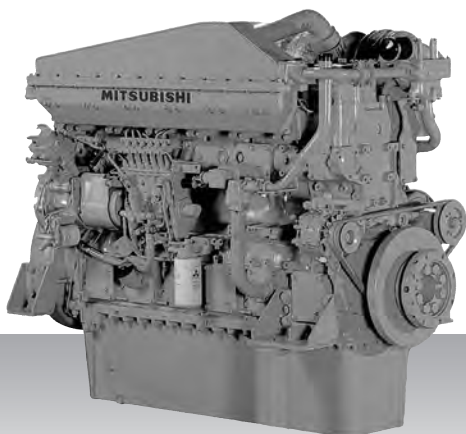
H (mm) : 1,235

Dry weight (kg) : 575

Dimensions and weight are based on standard configuration.

Auxiliary generator -
IMO Tier II / CCNR-2 / EU-3A - High speed

S6B3-T2MPTAW



6-cylinder, 4-cycle, water cooled diesel engine,
with direct-injection, turbocharger and air-cooler.

Bore x stroke (mm) : 135 x 170

Displacement (l) : 14.60

Commercial rating

| kW | bhp | rpm | Hz | Fuel cons. l/hr* | Emission |
|-----|-----|-------|----|------------------|----------|
| 335 | 449 | 1,500 | 50 | 45.7 | IMO-T2 |
| 375 | 503 | 1,800 | 60 | 52.5 | IMO-T2 |

*Average fuel consumption according to ISO, see page 6.
Specifications / data subject to change without prior notice.

Product dimensions & dry weight

L (mm) : 1,465

W (mm) : 873

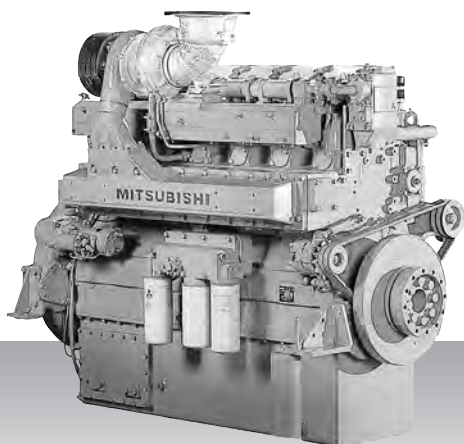
H (mm) : 1,331

Dry weight (kg) : 1,300

Dimensions and weight are based on standard configuration.

Auxiliary generator -
IMO Tier II / CCNR-2 / EU-3A - High speed

S6R-(Z3)MPTAW



6-cylinder, 4-cycle, water cooled diesel engine,
with direct-injection, turbocharger and air-cooler.

Bore x stroke (mm) : 170 x 180

Displacement (l) : 24.51

Commercial rating

| kW | bhp | rpm | Hz | Fuel cons. l/hr* | Emission |
|-----|-----|-------|----|------------------|----------------|
| 545 | 731 | 1,500 | 50 | on request | IMO-T2 |
| 635 | 852 | 1,800 | 60 | 82.4 | IMO-T2 / EU-3A |

*Average fuel consumption according to ISO, see page 6.
Specifications / data subject to change without prior notice.

Product dimensions & dry weight

L (mm) : 1,786

W (mm) : 1,220

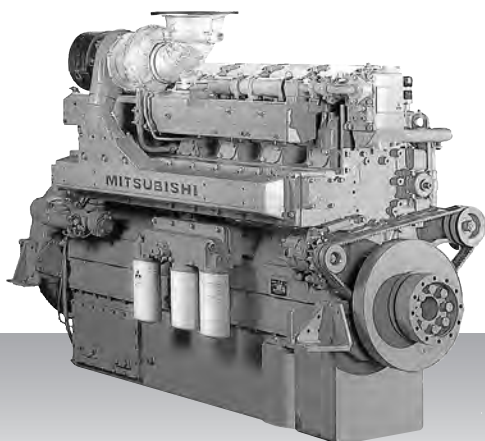
H (mm) : 1,650

Dry weight (kg) : 2,913

Dimensions and weight are based on standard configuration.

Auxiliary generator -
IMO Tier II / CCNR-2 / EU-3A - High speed

S6R2-T2MPTK



6-cylinder, 4-cycle, water cooled diesel engine,
with direct-injection, turbocharger and air-cooler.

Bore x stroke (mm) : 170 x 220
Displacement (l) : 29.96

Commercial rating

| kW | bhp | rpm | Hz | Fuel cons. l/hr* | Emission |
|-----|-----|-------|----|------------------|----------|
| 500 | 671 | 1,200 | 60 | on request | IMO-T2 |
| 640 | 858 | 1,500 | 50 | on request | IMO-T2 |

*Average fuel consumption according to ISO, see page 6.
Specifications / data subject to change without prior notice.

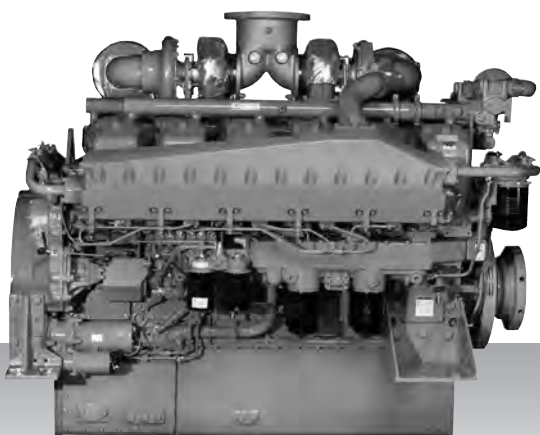
Product dimensions & dry weight

L (mm) : 1,811
W (mm) : 1,108
H (mm) : 1,694
Dry weight (kg) : 2,960

Dimensions and weight are based on standard configuration.

Auxiliary generator -
IMO Tier II / CCNR-2 / EU-3A - High speed

S12A2-MPTAW



12-cylinder, 4-cycle, water cooled diesel engine,
with direct-injection, turbocharger and air-cooler.

Bore x stroke (mm) : 150 x 160

Displacement (l) : 33.93

Commercial rating

| kW | bhp | rpm | Hz | Fuel cons. l/hr* | Emission |
|-----|-------|-------|----|------------------|----------|
| 709 | 951 | 1,500 | 50 | on request | IMO-T2 |
| 828 | 1,110 | 1,800 | 60 | 102.0 | IMO-T2 |

*Average fuel consumption according to ISO, see page 6.
Specifications / data subject to change without prior notice.

Product dimensions & dry weight

L (mm) : 2,059

W (mm) : 1,654

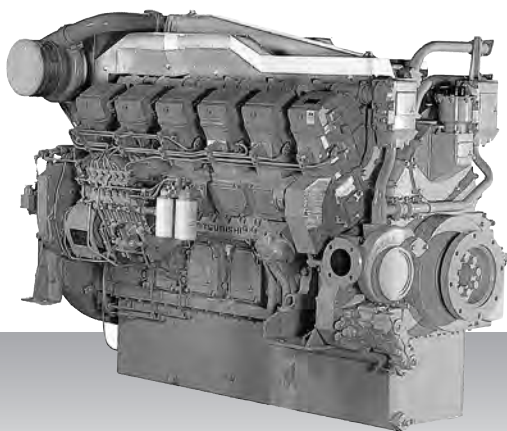
H (mm) : 1,596

Dry weight (kg) : 3,840

Dimensions and weight are based on standard configuration.

Auxiliary generator -
IMO Tier II / CCNR-2 / EU-3A - High speed

S12R-MPTAW



12-cylinder, 4-cycle, water cooled diesel engine,
with direct-injection, turbocharger and air-cooler.

Bore x stroke (mm) : 170 x 180

Displacement (l) : 49.03

Commercial rating

| kW | bhp | rpm | Hz | Fuel cons. l/hr* | Emission |
|-------|-------|-------|----|------------------|----------|
| 840 | 1,126 | 1,200 | 60 | 95.6 | IMO-T2 |
| 1,120 | 1,502 | 1,500 | 50 | 124.0 | IMO-T2 |
| 1,270 | 1,703 | 1,800 | 60 | 163.6 | IMO-T2 |

*Average fuel consumption according to ISO, see page 6.
Specifications / data subject to change without prior notice.

Product dimensions & dry weight

L (mm) : 2,416

W (mm) : 1,585

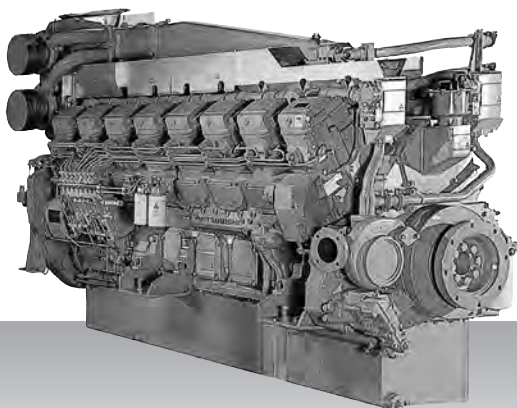
H (mm) : 1,807

Dry weight (kg) : 5,470

Dimensions and weight are based on standard configuration.

Auxiliary generator -
IMO Tier II / CCNR-2 / EU-3A - High speed

S16R-MPTAW



16-cylinder, 4-cycle, water cooled diesel engine,
with direct-injection, turbocharger and air-cooler.

Bore x stroke (mm) : 170 x 180

Displacement (l) : 65.37

Commercial rating

| kW | bhp | rpm | Hz | Fuel cons. l/hr* | Emission |
|-------|-------|-------|----|------------------|----------|
| 1,120 | 1,502 | 1,200 | 60 | on request | IMO-T2 |
| 1,500 | 2,012 | 1,500 | 50 | 182.6 | IMO-T2 |
| 1,690 | 2,266 | 1,800 | 60 | 211.9 | IMO-T2 |

*Average fuel consumption according to ISO, see page 6.
Specifications / data subject to change without prior notice.

Product dimensions & dry weight

L (mm) : 2,971

W (mm) : 1,585

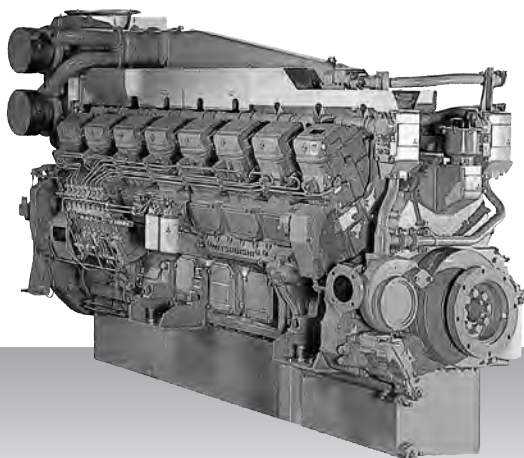
H (mm) : 1,960

Dry weight (kg) : 6,950

Dimensions and weight are based on standard configuration.

Auxiliary generator -
IMO Tier II /CCNR-2 / EU-3A - High speed

S16R2-T2MPTAW



16-cylinder, 4-cycle, water cooled diesel engine,
with direct-injection, turbocharger and air-cooler.

Bore x stroke (mm) : 170 x 220

Displacement (l) : 79.90

Commercial rating

| kW | bhp | rpm | Hz | Fuel cons. l/hr* | Emission |
|-------|-------|-------|----|------------------|----------|
| 1,568 | 2,103 | 1,200 | 60 | on request | IMO-T2 |
| 1,960 | 2,628 | 1,500 | 50 | on request | IMO-T2 |

*Average fuel consumption according to ISO, see page 6.
Specifications / data subject to change without prior notice.

Product dimensions & dry weight

L (mm) : 2,946

W (mm) : 1,525

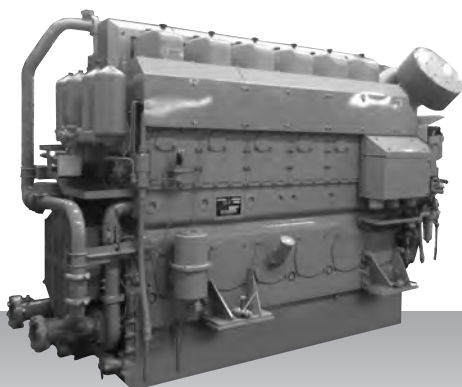
H (mm) : 2,030

Dry weight (kg) : 7,750

Dimensions and weight are based on standard configuration.

Auxiliary generator -
IMO Tier II - Medium speed

S6U-MPTK



6-cylinder, 4-cycle, water cooled diesel engine,
with direct-injection, turbocharger, air-cooler,.

Bore x stroke (mm) : 240 x 260

Displacement (l) : 70.57

Commercial rating

| kW | bhp | rpm | Hz | Fuel cons. g/kWh* | Emission |
|-------|-------|-------|----|-------------------|----------|
| 1,150 | 1,542 | 900 | 60 | on request | IMO-T2 |
| 1,270 | 1,703 | 1,000 | 50 | on request | IMO-T2 |
| 1,343 | 1,801 | 1,200 | 60 | on request | IMO-T2 |

*Fuel consumption value at 100% rated power in g/kWh.
Specifications / data subject to change without prior notice.

Product dimensions & dry weight

L (mm) : 3,211

W (mm) : 1,429

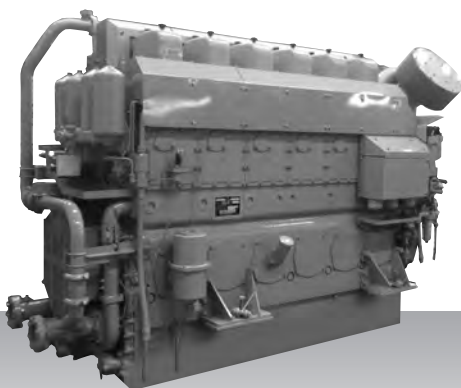
H (mm) : 2,104

Dry weight (kg) : 8,400

Dimensions and weight are based on standard configuration.

Auxiliary generator -
IMO Tier II - Medium speed

S6U2-MPTK



6-cylinder, 4-cycle, water cooled diesel engine,
with direct-injection, turbocharger and air-cooler.

Bore x stroke (mm) : 240 x 300

Displacement (l) : 81.43

Commercial rating

| kW | bhp | rpm | Hz | Fuel cons. g/kWh* | Emission |
|-------|-------|-------|----|-------------------|----------|
| 1,250 | 1,676 | 900 | 60 | on request | IMO-T2 |
| 1,363 | 1,828 | 1,000 | 50 | on request | IMO-T2 |

*Fuel consumption value at 100% rated power in g/kWh.
Specifications / data subject to change without prior notice.

Product dimensions & dry weight

L (mm) : 3,226

W (mm) : 1,429

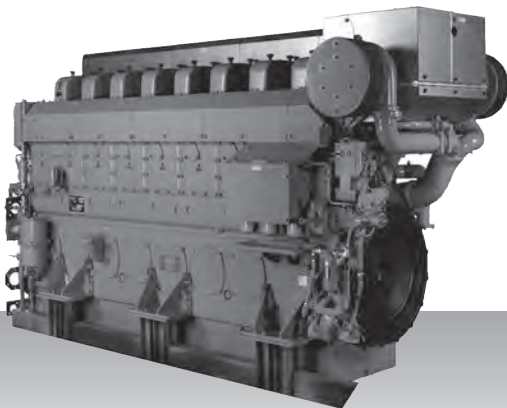
H (mm) : 2,177

Dry weight (kg) : 8,600

Dimensions and weight are based on standard configuration.

Auxiliary generator -
IMO Tier II - Medium speed

S8U-MPTK



8-cylinder, 4-cycle, water cooled diesel engine,
with direct-injection, turbocharger and air-cooler.

Bore x stroke (mm) : 240 x 260

Displacement (l) : 94.10

Commercial rating

| kW | bhp | rpm | Hz | Fuel cons. g/kWh* | Emission |
|-------|-------|-------|----|-------------------|----------|
| 1,533 | 2,056 | 900 | 60 | on request | IMO-T2 |
| 1,693 | 2,270 | 1,000 | 50 | on request | IMO-T2 |
| 1,790 | 2,400 | 1,200 | 60 | on request | IMO-T2 |

*Fuel consumption value at 100% rated power in g/kWh.
Specifications / data subject to change without prior notice.

Product dimensions & dry weight

L (mm) : 4,065

W (mm) : 1,539

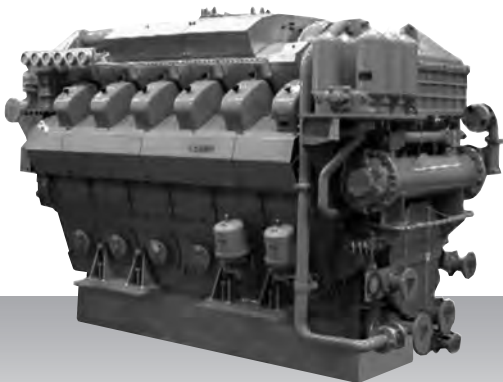
H (mm) : 2,192

Dry weight (kg) : 11,000

Dimensions and weight are based on standard configuration.

Auxiliary generator -
IMO Tier II - Medium speed

S12U-MPTK



12-cylinder, 4-cycle, water cooled diesel engine,
with direct-injection, turbocharger and air-cooler.

Bore x stroke (mm) : 240 x 260

Displacement (l) : 141.15

Commercial rating

| kW | bhp | rpm | Hz | Fuel cons. g/kWh* | Emission |
|-------|-------|-------|----|-------------------|----------|
| 2,299 | 3,083 | 900 | 60 | on request | IMO-T2 |
| 2,541 | 3,408 | 1,000 | 50 | on request | IMO-T2 |
| 2,685 | 3,601 | 1,200 | 60 | on request | IMO-T2 |

*Fuel consumption value at 100% rated power in g/kWh.
Specifications / data subject to change without prior notice.

Product dimensions & dry weight

L (mm) : 3,562

W (mm) : 1,910

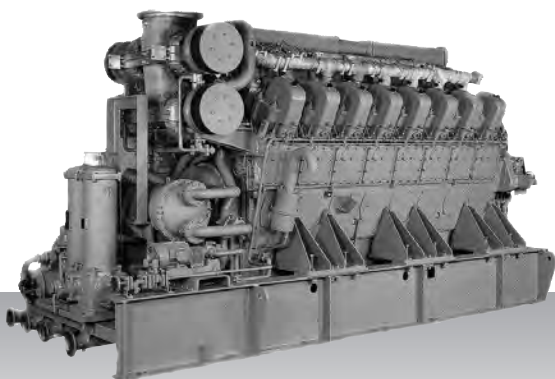
H (mm) : 2,374

Dry weight (kg) : 16,600

Dimensions and weight are based on standard configuration.

Auxiliary generator -
IMO Tier II - Medium speed

S16U-MPTK



16-cylinder, 4-cycle, water cooled diesel engine,
with direct-injection, turbocharger and air-cooler.

Bore x stroke (mm) : 240 x 260

Displacement (l) : 188.19

Commercial rating

| kW | bhp | rpm | Hz | Fuel cons. g/kWh* | Emission |
|-------|-------|-------|----|-------------------|----------|
| 3,065 | 4,110 | 900 | 60 | on request | IMO-T2 |
| 3,388 | 4,543 | 1,000 | 50 | on request | IMO-T2 |
| 3,580 | 4,801 | 1,200 | 60 | on request | IMO-T2 |

*Fuel consumption value at 100% rated power in g/kWh.
Specifications / data subject to change without prior notice.

Product dimensions & dry weight

L (mm) : 4,628

W (mm) : 1,710

H (mm) : 2,473

Dry weight (kg) : 20,500

Dimensions and weight are based on standard configuration.

Generator set specifications



LNG Tanker - M/T Ternsund
Partner - Power House AB

ENGINE MODEL LINE-UP - MARINE GENERATOR SET

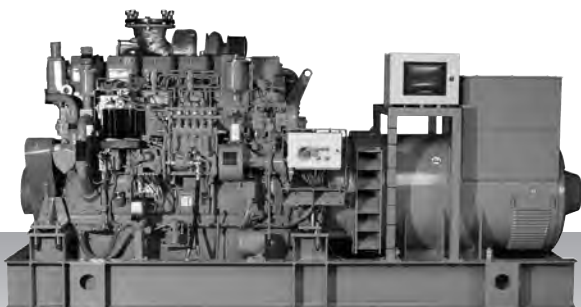
| Series | 100 kWe | 500 kWe | 1,000 kWe | 2,000 kWe | 5,000 kWe |
|------------|---------|-----------|---------------|---------------|-----------|
| MAS 650-S | | 522 □ 603 | | | |
| MAS 760-S | | 476 □ 612 | | | |
| MAS 850-S | | 678 □ 718 | | | |
| MAS 1350-S | | | 799 □ 1,223 | | |
| MAS 1795-S | | | 1,070 □ 1,633 | | |
| MAS 2350-S | | | | 1,505 □ 1,886 | |

Generator set products - IMO Tier II / EU-3A

| Engine model | kVA | kWe | rpm | Hz | Emission | Page |
|-----------------------------------|-------|-------|-------|----|----------------|------|
| Diesel-electric propulsion | | | | | | |
| 50 Hz | | | | | | |
| MAS 650-S | 652 | 522 | 1,500 | 50 | IMO-T2 | 93 |
| MAS 760-S | 765 | 612 | 1,500 | 50 | IMO-T2 | 94 |
| MAS 850-S | 847 | 678 | 1,500 | 50 | IMO-T2 | 95 |
| MAS 1350-S | 1,351 | 1,081 | 1,500 | 50 | IMO-T2 | 96 |
| MAS 1795-S | 1,796 | 1,437 | 1,500 | 50 | IMO-T2 | 97 |
| MAS 2350-S | 2,358 | 1,886 | 1,500 | 50 | IMO-T2 | 98 |
| 60 Hz | | | | | | |
| MAS 650-S | 684 | 548 | 1,800 | 60 | IMO-T2 | 93 |
| MAS 760-S | 594 | 476 | 1,200 | 60 | IMO-T2 | 94 |
| MAS 850-S | 898 | 718 | 1,800 | 60 | IMO-T2 | 95 |
| MAS 1350-S | 999 | 799 | 1,200 | 60 | IMO-T2 | 96 |
| MAS 1350-S | 1,385 | 1,108 | 1,800 | 60 | IMO-T2 | 96 |
| MAS 1795-S | 1,337 | 1,070 | 1,200 | 60 | IMO-T2 | 97 |
| MAS 1795-S | 1,857 | 1,485 | 1,800 | 60 | IMO-T2 | 97 |
| MAS 2350-S | 1,881 | 1,505 | 1,200 | 60 | IMO-T2 | 98 |
| Auxiliary generator | | | | | | |
| 50 Hz | | | | | | |
| MAS 650-S | 652 | 522 | 1,500 | 50 | IMO-T2 | 93 |
| MAS 760-S | 765 | 612 | 1,500 | 50 | IMO-T2 | 94 |
| MAS 850-S | 847 | 678 | 1,500 | 50 | IMO-T2 | 95 |
| MAS 1350-S | 1,351 | 1,081 | 1,500 | 50 | IMO-T2 | 96 |
| MAS 1795-S | 1,796 | 1,437 | 1,500 | 50 | IMO-T2 | 97 |
| MAS 2350-S | 2,358 | 1,886 | 1,500 | 50 | IMO-T2 | 98 |
| 60 Hz | | | | | | |
| MAS 650-S | 753 | 603 | 1,800 | 60 | IMO-T2 / EU-3A | 93 |
| MAS 760-S | 594 | 476 | 1,200 | 60 | IMO-T2 | 94 |
| MAS 850-S | 988 | 790 | 1,800 | 60 | IMO-T2 | 95 |
| MAS 1350-S | 999 | 799 | 1,200 | 60 | IMO-T2 | 96 |
| MAS 1350-S | 1,529 | 1,223 | 1,800 | 60 | IMO-T2 | 96 |
| MAS 1795-S | 1,337 | 1,070 | 1,200 | 60 | IMO-T2 | 97 |
| MAS 1795-S | 2,041 | 1,633 | 1,800 | 60 | IMO-T2 | 97 |
| MAS 2350-S | 1,881 | 1,505 | 1,200 | 60 | IMO-T2 | 98 |

Generator set -
IMO Tier II / EU-3A

MAS 650-S



Engine model S6R-(Z3)MPTAW

Commercial rating

| | kVA | kWe | rpm | Hz | Emission |
|----------------------------|-----|-----|-------|----|----------------|
| Diesel-electric propulsion | 652 | 522 | 1,500 | 50 | IMO-T2 |
| | 684 | 548 | 1,800 | 60 | IMO-T2 |
| Auxiliary generator | 652 | 522 | 1,500 | 50 | IMO-T2 |
| | 753 | 603 | 1,800 | 60 | IMO-T2 / EU-3A |

Specifications/ data subject to change without prior notice.

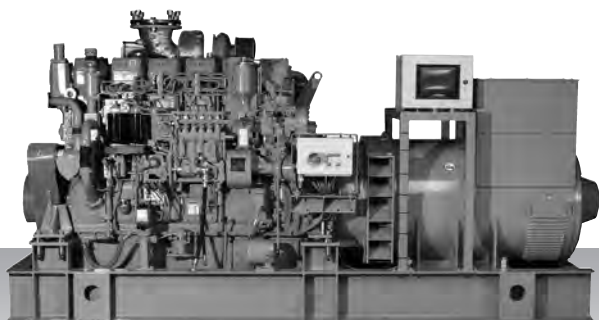
Product dimensions & dry weight

L (mm) : 3,600
W (mm) : 1,615
H (mm) : 1,900
Dry weight (kg) : 5,900

Dimensions and weight are based on standard configuration.

Generator set -
IMO Tier II / EU-3A

MAS 760-S



Engine model S6R2-T2MPTK

Commercial rating

| | kVA | kWe | rpm | Hz | Emission |
|----------------------------|-----|-----|-------|----|----------|
| Diesel-electric propulsion | 594 | 476 | 1,200 | 60 | IMO-T2 |
| | 765 | 612 | 1,500 | 50 | IMO-T2 |
| Auxiliary generator | 594 | 476 | 1,200 | 60 | IMO-T2 |
| | 765 | 612 | 1,500 | 50 | IMO-T2 |

Specifications/ data subject to change without prior notice.

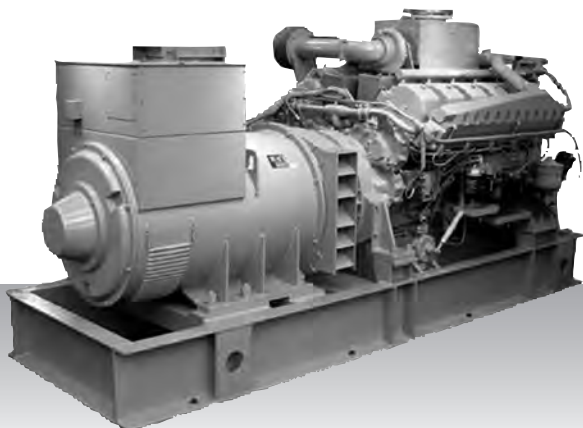
Product dimensions & dry weight

L (mm) : 3,600
W (mm) : 1,615
H (mm) : 1,931
Dry weight (kg) : 6,030

Dimensions and weight are based on standard configuration.

Generator set -
IMO Tier II / EU-3A

MAS 850-S



Engine model S12A2-MPTAW

Commercial rating

| | kVA | kWe | rpm | Hz | Emission |
|----------------------------|-----|-----|-------|----|----------|
| Diesel-electric propulsion | 847 | 678 | 1,500 | 50 | IMO-T2 |
| | 898 | 718 | 1,800 | 60 | IMO-T2 |
| Auxiliary generator | 847 | 678 | 1,500 | 50 | IMO-T2 |
| | 988 | 790 | 1,800 | 60 | IMO-T2 |

Specifications/ data subject to change without prior notice.

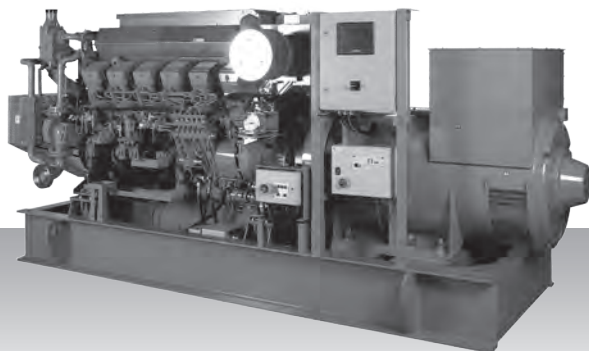
Product dimensions & dry weight

L (mm) : 3,760
W (mm) : 1,818
H (mm) : 1,900
Dry weight (kg) : 8,000

Dimensions and weight are based on standard configuration.

Generator set -
IMO Tier II / EU-3A

MAS 1350-S



Engine model S12R-MPTAW

Commercial rating

| | kVA | kWe | rpm | Hz | Emission |
|----------------------------|-------|-------|-------|----|----------|
| Diesel-electric propulsion | 999 | 799 | 1,200 | 60 | IMO-T2 |
| | 1,351 | 1,081 | 1,500 | 50 | IMO-T2 |
| | 1,385 | 1,108 | 1,800 | 60 | IMO-T2 |
| Auxiliary generator | 999 | 799 | 1,200 | 60 | IMO-T2 |
| | 1,351 | 1,081 | 1,500 | 50 | IMO-T2 |
| | 1,529 | 1,223 | 1,800 | 60 | IMO-T2 |

Specifications/ data subject to change without prior notice.

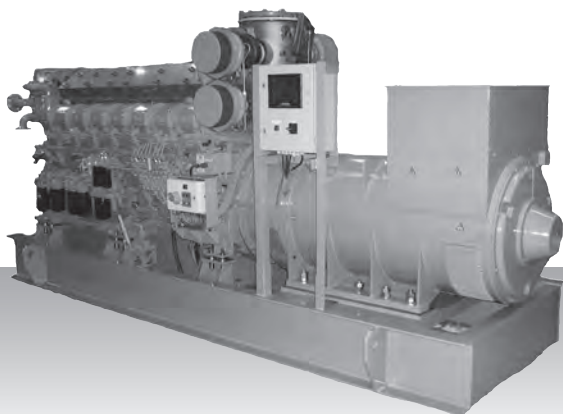
Product dimensions & dry weight

L (mm) : 4,100
W (mm) : 1,725
H (mm) : 2,280
Dry weight (kg) : 10,000

Dimensions and weight are based on standard configuration.

Generator set -
IMO Tier II / EU-3A

MAS 1795-S



Engine model S16R-MPTAW

Commercial rating

| | kVA | kWe | rpm | Hz | Emission |
|----------------------------|-------|-------|-------|----|----------|
| Diesel-electric propulsion | 1,337 | 1,070 | 1,200 | 60 | IMO-T2 |
| | 1,796 | 1,437 | 1,500 | 50 | IMO-T2 |
| | 1,857 | 1,485 | 1,800 | 60 | IMO-T2 |
| Auxiliary generator | 1,337 | 1,070 | 1,200 | 60 | IMO-T2 |
| | 1,796 | 1,437 | 1,500 | 50 | IMO-T2 |
| | 2,041 | 1,633 | 1,800 | 60 | IMO-T2 |

Specifications/ data subject to change without prior notice.

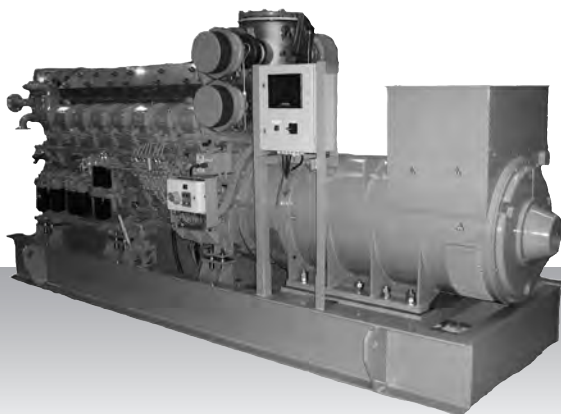
Product dimensions & dry weight

L (mm) : 4,880
W (mm) : 1,725
H (mm) : 2,280
Dry weight (kg) : 14,000

Dimensions and weight are based on standard configuration.

Generator set -
IMO Tier II / EU-3A

MAS 2350-S



Engine model S16R2-T2MPTAW

Commercial rating

| | kVA | kWe | rpm | Hz | Emission |
|----------------------------|-------|-------|-------|----|----------|
| Diesel-electric propulsion | 1,881 | 1,505 | 1,200 | 60 | IMO-T2 |
| | 2,358 | 1,886 | 1,500 | 50 | IMO-T2 |
| Auxiliary generator | 1,881 | 1,505 | 1,200 | 60 | IMO-T2 |
| | 2,358 | 1,886 | 1,500 | 50 | IMO-T2 |

Specifications/ data subject to change without prior notice.

Product dimensions & dry weight

L (mm) : 4,950
W (mm) : 1,750
H (mm) : 2,400
Dry weight (kg) : 18,000

Dimensions and weight are based on standard configuration.

Gas generator set specifications



Ferry Boat - Dronninge

Partner - Mitsubishi Turbocharger and Engine Europe B.V.
Norwegian Branch Office, Marine and Power Solutions

ENGINE MODEL LINE-UP - MARINE GAS GENERATOR SET

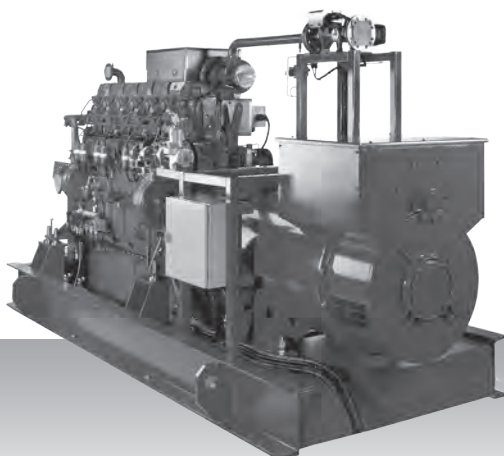
| Series | 100 kWe | 500 kWe | 1,000 kWe | 2,000 kWe | 5,000 kWe |
|------------|---------|-----------|-----------|-------------|-----------|
| MAS-G 430 | | 299 □ 345 | | | |
| MAS-G 470 | | 375 | | | |
| MAS-G 870 | | | 607 □ 694 | | |
| MAS-G 1160 | | | 708 □ 925 | | |
| MAS-G 1885 | | | | 960 □ 1,508 | |

Gas generator set products*

| Engine model | kVA | KWe | rpm | Hz | Page |
|--------------|-------|-------|-------|----|------|
| 50 Hz | | | | | |
| MAS-G 430 | 431 | 345 | 1,500 | 50 | 101 |
| MAS-G 870 | 868 | 694 | 1,500 | 50 | 103 |
| MAS-G 1160 | 1,157 | 925 | 1,500 | 50 | 104 |
| MAS-G 1885 | 1,885 | 1,508 | 1,500 | 50 | 105 |
| 60 Hz | | | | | |
| MAS-G 430 | 374 | 299 | 1,200 | 60 | 101 |
| MAS-G 470 | 468 | 375 | 1,200 | 60 | 102 |
| MAS-G 870 | 750 | 607 | 1,200 | 60 | 103 |
| MAS-G 1160 | 975 | 780 | 1,200 | 60 | 104 |
| MAS-G 1885 | 1,200 | 960 | 1,200 | 60 | 105 |

* For gas direct propulsion fixed pitch propellor and controlable pitch propellor please contact Mitsubishi Turbocharger and Engine Europe B.V.

MAS-G 430



Engine model GS6R-MPTK

Commercial rating

| | kVA | kWe | rpm | Hz |
|-------------------------|-----|-----|-------|----|
| Gas-electric propulsion | 374 | 299 | 1,200 | 60 |
| | 431 | 345 | 1,500 | 50 |

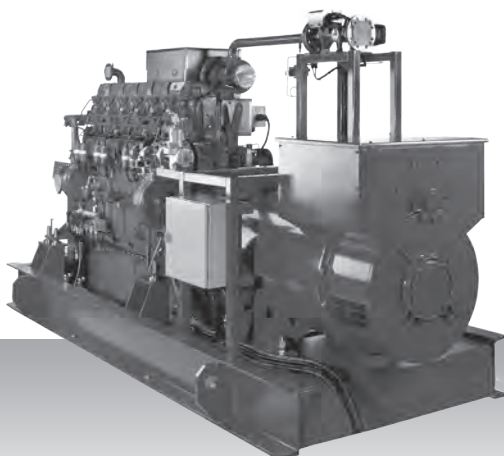
Specifications / data subject to change without prior notice.

Product dimensions & dry weight

L (mm) : 1,797
W (mm) : 1,088
H (mm) : 1,638
Dry weight (kg) : 2,400

Dimensions and weight are based on standard configuration.

MAS-G 470



Engine model GS6R2-MPTK

Commercial rating

| | kVA | kWe | rpm | Hz |
|-------------------------|-----|-----|-------|----|
| Gas-electric propulsion | 468 | 375 | 1,200 | 60 |

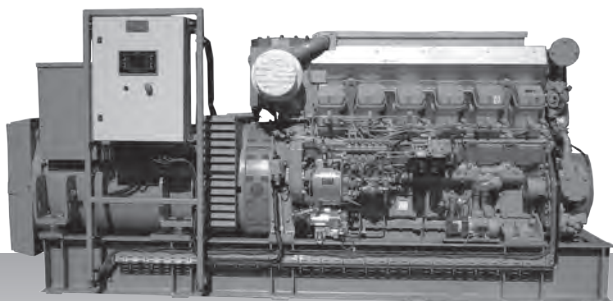
Specifications / data subject to change without prior notice.

Product dimensions & dry weight

L (mm) : 1,864
W (mm) : 1,063
H (mm) : 1,718
Dry weight (kg) : 2,650

Dimensions and weight are based on standard configuration.

MAS-G 870



Engine model GS12R-MPTK

Commercial rating

| | kVA | kWe | rpm | Hz |
|-------------------------|-----|-----|-------|----|
| Gas-electric propulsion | 750 | 607 | 1,200 | 60 |
| | 868 | 694 | 1,500 | 50 |

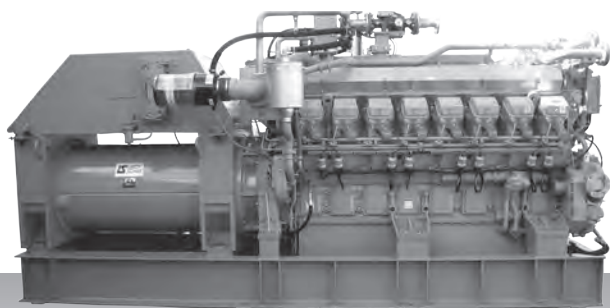
Specifications / data subject to change without prior notice.

Product dimensions & dry weight

L (mm) : 2,371
W (mm) : 1,820
H (mm) : 2,137
Dry weight (kg) : 5,375

Dimensions and weight are based on standard configuration.

MAS-G 1160



Engine model GS16R-MPTK

Commercial rating

| | kVA | kWe | rpm | Hz |
|-------------------------|-------|-----|-------|----|
| Gas-electric propulsion | 975 | 780 | 1,200 | 60 |
| | 1,157 | 925 | 1,500 | 50 |

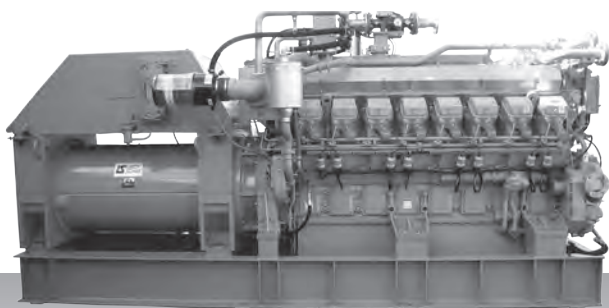
Specifications / data subject to change without prior notice.

Product dimensions & dry weight

L (mm) : 2,841
W (mm) : 1,820
H (mm) : 2,137
Dry weight (kg) : 6,800

Dimensions and weight are based on standard configuration.

MAS-G 1885



Engine model GS16R2-MPTK

Commercial rating

| | kVA | kWe | rpm | Hz |
|-------------------------|-------|-------|-------|----|
| Gas-electric propulsion | 1,200 | 960 | 1,200 | 60 |
| | 1,885 | 1,508 | 1,500 | 50 |

Specifications / data subject to change without prior notice.

Product dimensions & dry weight

L (mm) : 3,423
W (mm) : 2,164
H (mm) : 2,122
Dry weight (kg) : 8,105

Dimensions and weight are based on standard configuration.



International offices

WORLDWIDE

Headquarters

Mitsubishi Heavy Industries, Ltd.

16-5 Konan 2-chome, Minato-ku, Tokyo, Japan

Tel: +81-3-6716-3111

Fax: +81-3-6716-5800

www.mhi.co.jp/en

Headquarters engine division

Mitsubishi Heavy Industries Engine & Turbocharger, Ltd.

3000, Tana, Chuo-ku, Sagamihara, Kanagawa, 252-5293, Japan

Tel: +81-42-862-0701

Fax: +81-42-763-0800

www.mhiet.co.jp/en/

Asia-Pacific

Singapore

MHI Engine System Asia Pte. Ltd.

No. 3 Tuas Avenue 12, Singapore 639024, Republic of Singapore

Tel: +65-6862-2202

Fax: +65-6862-5728

www.mhiesa.com.sg

Indonesia

PT. MHI Engine System Indonesia

#302 Bld. Cilandak Commercial Estate P.O. Box 7510 CCE, Cilandak, Jakarta, Indonesia

Tel: +62-21-7890191

Fax: +62-21-7890278

Philippines

MHI Engine System Philippines, Inc.

24 Warehouse 4C Sunblest Compound KM 23, West service road B0. Cupang, Muntinlupa, Metro Manila, Philippines

Tel: +63-2-775-0209

Fax: +63-2-775-0310

Vietnam

MHI Engine System Vietnam Co., Ltd.

39 Dai Lo Huu Nghi, Vietnam Singapore Industrial Park Thuan An District, Binh Duong Province Socialist Republic of Vietnam

Tel: +63-2-775-0209

Fax: +63-2-775-0310

Americas

U.S.A.

Mitsubishi Turbocharger and Engine America, Inc.

Two Pierce Place, 11th Floor, Itasca, IL 60143 U.S.A.

Tel: +1-630-268-0750

Fax: +1-630-268-9293

www.mitsubishi-engine.com

Brazil

MHI Sul Americana Distribuidora de Motores Ltda.

Avenida Doutor Altino Arantes, 331 Vila Clementino Cep 04042-032,
Sao Paulo, SP, Brazil

Tel: +55-11-3515-7890

Fax: +55-11-3515-7899

www.msamotors.com.br

Europe, Russia, Middle East and Africa

Headquarters

Mitsubishi Turbocharger and Engine Europe B.V.

Damsluisweg 2, 1332 EC, Almere, The Netherlands

Tel: +31-36-538-8311

Email: info@mtee.eu

www.mtee.eu

Branch office

Mitsubishi Turbocharger and Engine Europe B.V.

Norwegian Branch Office, Marine and Power Solutions

Industriveien 1, 3430 Spikkestad, Norway

Tel: +47-31-291-940

Email: info@mtee.no

www.mtee.no

DISTRIBUTORS AND DEALERS OF MARINE ENGINES

**Albania, Bosnia and Herzegovina,
Croatia, Kosovo, Macedonia,
Montenegro, Serbia, Slovenia**

EXTREME d.o.o.

www.extreme-slo.com

Belarus

Motors & Transmission

www.mit.by

Denmark, Greenland

West Diesel A.S.

www.westdiesel.dk

Estonia, Latvia, Lithuania

BMG Diesel Center

www.dieselcenter.ee

Finland

Inter Marine Oy

www.intermarine.fi

France

MIDIF

www.midif.fr

Germany, Austria, Switzerland

ScanDiesel GmbH

www.scandiesel.de

Greece

A.EI.M.A. SA

www.aeima.gr

Iceland

MD Vélar Ltd.

www.mdvelar.is

Iran

SANA FARASTAN Co., Ltd.

www.sanafarastan.com

Ireland

Diamond Diesels UK Ltd.

www.diamonddiesels.co.uk

Padmos Ireland

www.padmos.nl

Italy

Cerdiesel S.p.A.

www.cerdiesel.com

Compagnia Tecnica Motori
S.p.A.

www.ctm.it

Morocco

Ste Naval Maintenance

ste.naval@hotmail.fr

**Netherlands, Belgium,
Luxemburg**

Koedood Dieselservice B.V.

www.koedood.nl

Machinefabriek G. Olthof N.V.

www.olthof.eu

Machinefabriek Padmos

Stellendam B.V.

www.padmos.nl

Norway

Mitsubishi Turbocharger and
Engine Europe B.V., Norwegian
Branch Office, Marine and
Power Solutions

www.mtee.no

Oman

OHI Marine

www.ohigroup.com

Poland

BTH FAST

www.bthfast.eu

Portugal

Progener

www.progener.es

Romania

SC Watermota Srl

www.watermota.ro

Russia

"M-MOTORS" LLC

www.mitsubishi-engine.ru

South Africa, Swaziland, Lesotho

Power O2
www.powero2.co.za

Spain

ITXASTEK SAL
unai@itxastek.com

Progener

www.progener.es

Solé Diesel S.A.

www.solediesel.com

Sweden

Power House AB
www.powerhouse.se

Turkey

Enka Marketing Export Import
Inc.
www.enka.com.tr

United Kingdom

Diamond Diesels UK Ltd
www.diamonddiesels.co.uk

PARTNERS IN MARINE ENGINES AND GENERATOR SETS

10 to 100 kW

Solé Diesel S.A.
www.solediesel.com

Craftsman

www.craftsmanmarine.com

VETUS B.V.

www.vetus.com

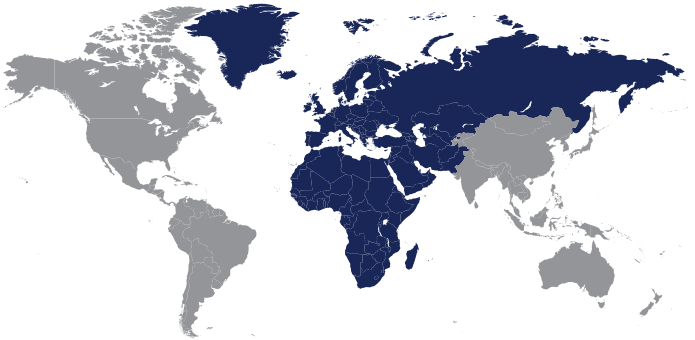
For more information about Mitsubishi marine engines and generator sets specifications please contact your local distributor or Mitsubishi Turbocharger and Engine Europe B.V.

Disclaimer

Mitsubishi Turbocharger and Engine Europe B.V. reserves the right to modify any characteristic or specification without prior notice and without incurring any obligation. The illustrations may include optional equipment and/or accessories. All information in this brochure is based on the latest information available at the time of printing. Unless mentioned otherwise, the information mentioned is owned by Mitsubishi Turbocharger and Engine Europe B.V. Text, lay-out, illustrations, scripts, articles and other items in this product guide are protected by copyright.

Your loyal, reliable partner since 1917

In 1917, Mitsubishi Heavy Industries (MHI) became the first Japanese company to develop and build a diesel engine, and since then has steadfastly pioneered technologies for the reciprocating engine. MHI offers a broad line-up, ranging from construction machinery and marine engines to engines for power generation. In recent years, the company has been involved in the general development of advanced gas turbines, rocket engines, and other types of internal combustion engines, even as it continues to look at the true significance and its decades-long quest to further refine the reciprocating engine.



MITSUBISHI TURBOCHARGER AND ENGINE EUROPE B.V.

Headquarters Engine, Generator set & Powerplant Division Europe, Middle East and Africa

Damsluisweg 2
1332 EC Almere
P.O. Box 30101
1303 AC Almere
The Netherlands

Phone +31-36-538-8311

info@mtee.eu
www.mtee.eu